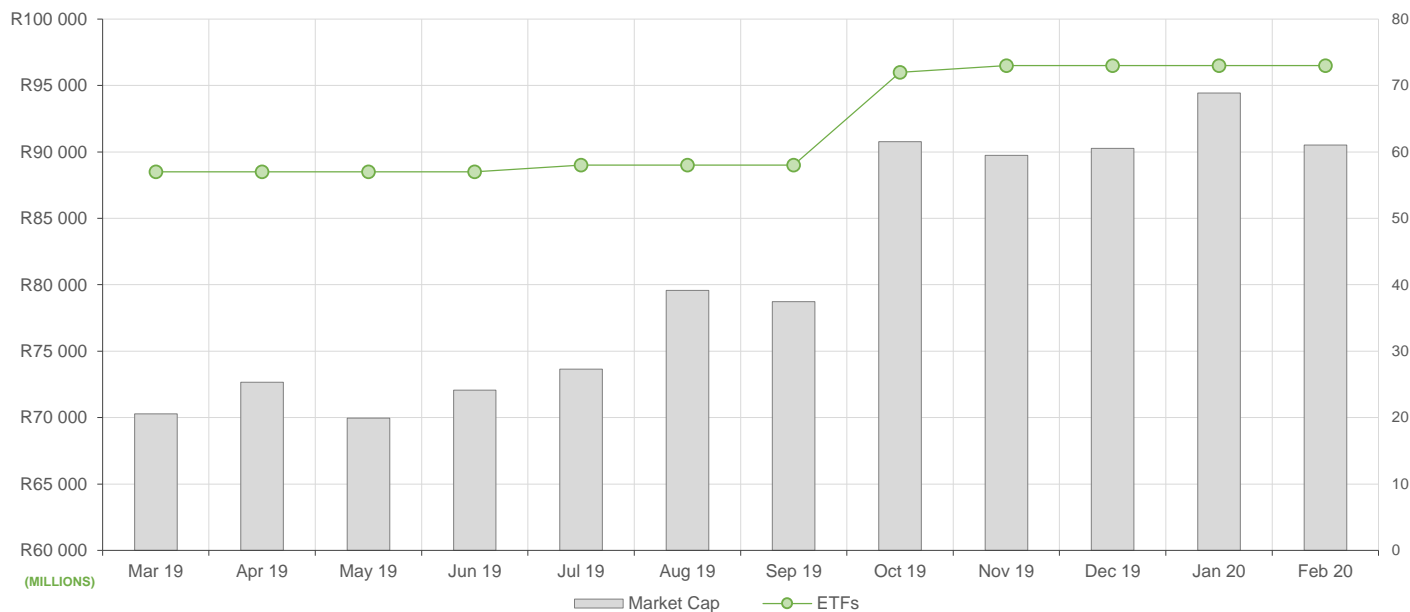


NEW LISTINGS AND DELISTINGS

ETF	CODE	ISSUER	EVENT	DATE
--	--	--	--	--

MARKET CAPITALISATION ANALYSIS | Total Industry



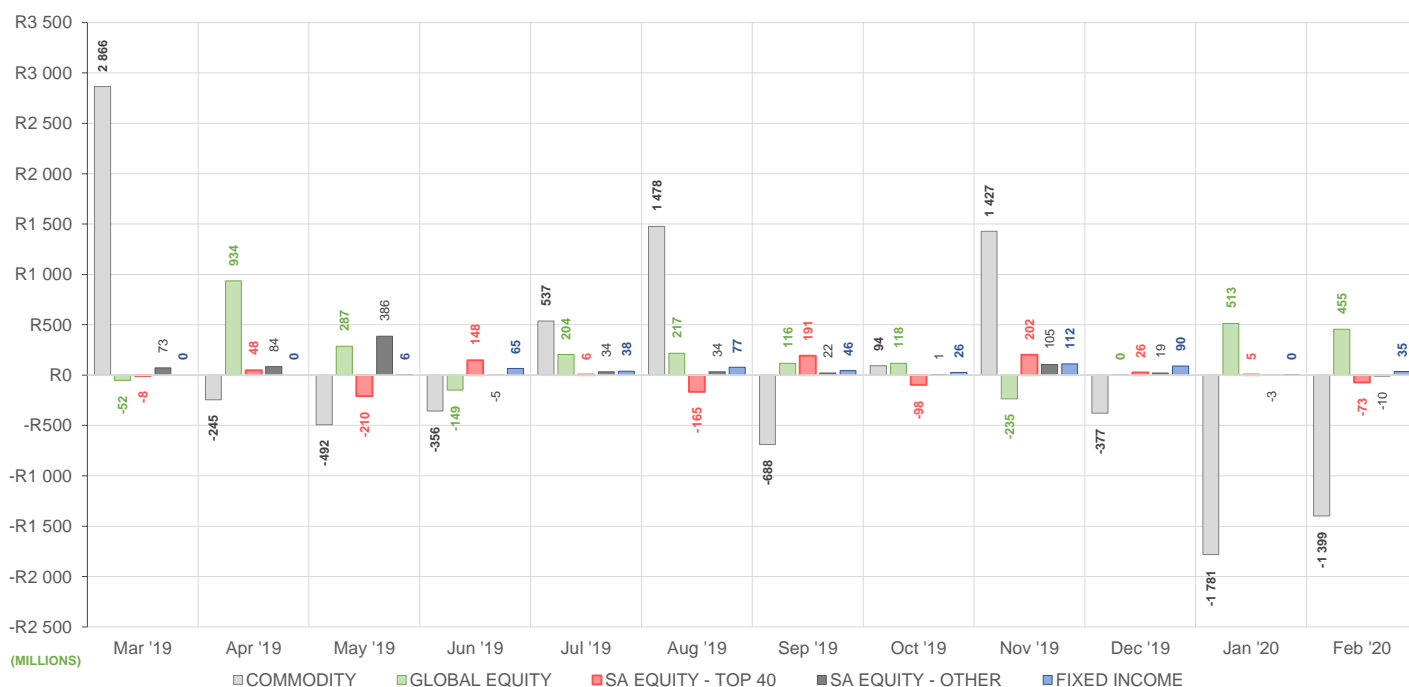
NET DAILY EXCHANGE CREATIONS AND REDEMPTIONS | Top & Bottom Five ETFs

TOP 5 INSTRUMENTS	CODE	TOTAL DAILY CREATIONS	TOTAL DAILY REDEMPTIONS	NET MONTHLY CREATIONS
1invest Platinum	ETFPLT	R1 296 151 000	-R43 970 875	R1 252 180 125
Satrix MSCI World Feeder	STXWDM	R90 498 000	-R14 535 000	R75 963 000
Satrix Nasdaq 100	STXNDQ	R103 103 000	-R31 532 500	R71 570 500
Sygnia Itrix S&P 500	SYG500	R69 391 000	---	R69 391 000
1invest S&P 500 IT	ETF5IT	R62 321 750	---	R62 321 750

BOTTOM 5 INSTRUMENTS	CODE	TOTAL DAILY CREATIONS	TOTAL DAILY REDEMPTIONS	NET MONTHLY CREATIONS
Sygnia Itrix 4th Industrial Rev	SYG4IR	R28 354 500	-R91 973 745	-R63 619 245
Satrix 40	STX40	R57 244 000	-R128 440 500	-R71 196 500
NewPlatinum	NGPLT	---	-R323 386 500	-R323 386 500
NewGold	GLD	---	-R997 120 000	-R997 120 000
1invest Palladium	ETFPLD	R88 817 625	-R1 337 916 148	-R1 249 098 523

Considers the daily update to total number of issued units listed on the exchange over the calendar month, with Creations representing a day-on-day increase in total number of listed units, and Redemptions representing a decrease. An average day-on-day price is used to estimate the ZAR value of each net daily movement. No secondary market transactions are considered.

NET MONTHLY EXCHANGE CREATIONS AND REDEMPTIONS



MONTHLY ETF PERFORMANCE | Top & Bottom Five ETFs

TOP 5 INSTRUMENTS	CODE	TOTAL RETURN	VOLATILITY	MAX DRAW DOWN
1invest Rhodium	ETFRHO	21.15%	13.18%	-6.91%
NewPalladium	NGPLD	20.78%	10.76%	-3.99%
1invest Palladium	ETFPLD	19.67%	10.81%	-4.30%
Dollar Custodial Certificate	DCCUSD	7.20%	4.37%	-1.96%
Ashburton World Global Bond	ASHWGB	7.17%	4.34%	-1.71%

BOTTOM 5 INSTRUMENTS	CODE	TOTAL RETURN	VOLATILITY	MAX DRAW DOWN
Newfunds MAPPS Protect	MAPPSP	-11.99%	11.75%	-13.80%
CoreShares SciBeta M-FI	SMART	-12.02%	6.75%	-12.78%
1invest SA Property	ETFSAP	-14.79%	11.07%	-14.79%
Satrix Property	STXPRO	-15.84%	4.28%	-15.84%
CoreShares SA Property	CSPROP	-15.86%	4.98%	-15.86%

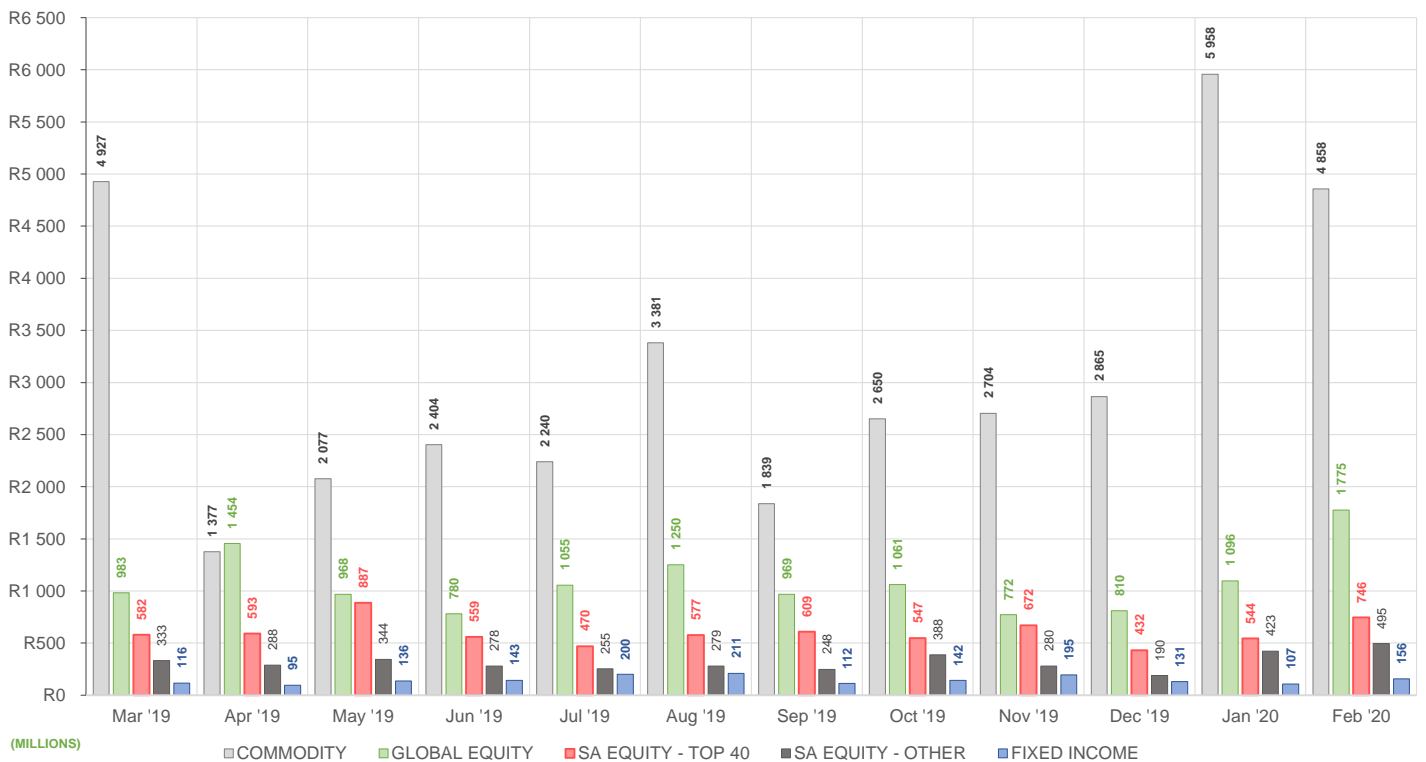
ROLLING 12-MONTH ETF PERFORMANCE | Top & Bottom Five ETFs

TOP 5 INSTRUMENTS	CODE	TOTAL RETURN	VOLATILITY	MAX DRAW DOWN
1invest Rhodium	ETFRHO	135.84%	25.04%	-6.91%
NewPalladium	NGPLD	89.38%	27.54%	-20.12%
1invest Palladium	ETFPLD	57.77%	18.65%	-10.30%
KR Custodial Certificate	KCCGLD	36.57%	136.76%	-52.92%
NewGold	GLD	36.09%	17.14%	-11.23%

BOTTOM 5 INSTRUMENTS	CODE	TOTAL RETURN	VOLATILITY	MAX DRAW DOWN
Satrix FINI	STXFIN	-15.91%	20.39%	-24.11%
NewFunds Equity Value	NFEVAL	-15.99%	14.19%	-21.70%
1invest SA Property	ETFSAP	-18.04%	18.75%	-43.50%
CoreShares SA Property	CSPROP	-19.93%	7.19%	-28.58%
Satrix Property	STXPRO	-25.36%	15.17%	-31.77%

Total Return is the monthly/annual performance incorporating price performance and immediate reinvestment of dividends. Volatility is based on daily price standard deviation and presented as a monthly/annual volatility. Maximum draw down measures the worst case return outcome for an investor over the course of the period – based on purchase and subsequent sale timing that results in the largest loss of capital.

MONTHLY VALUE TRADED FOR ALL ETFs



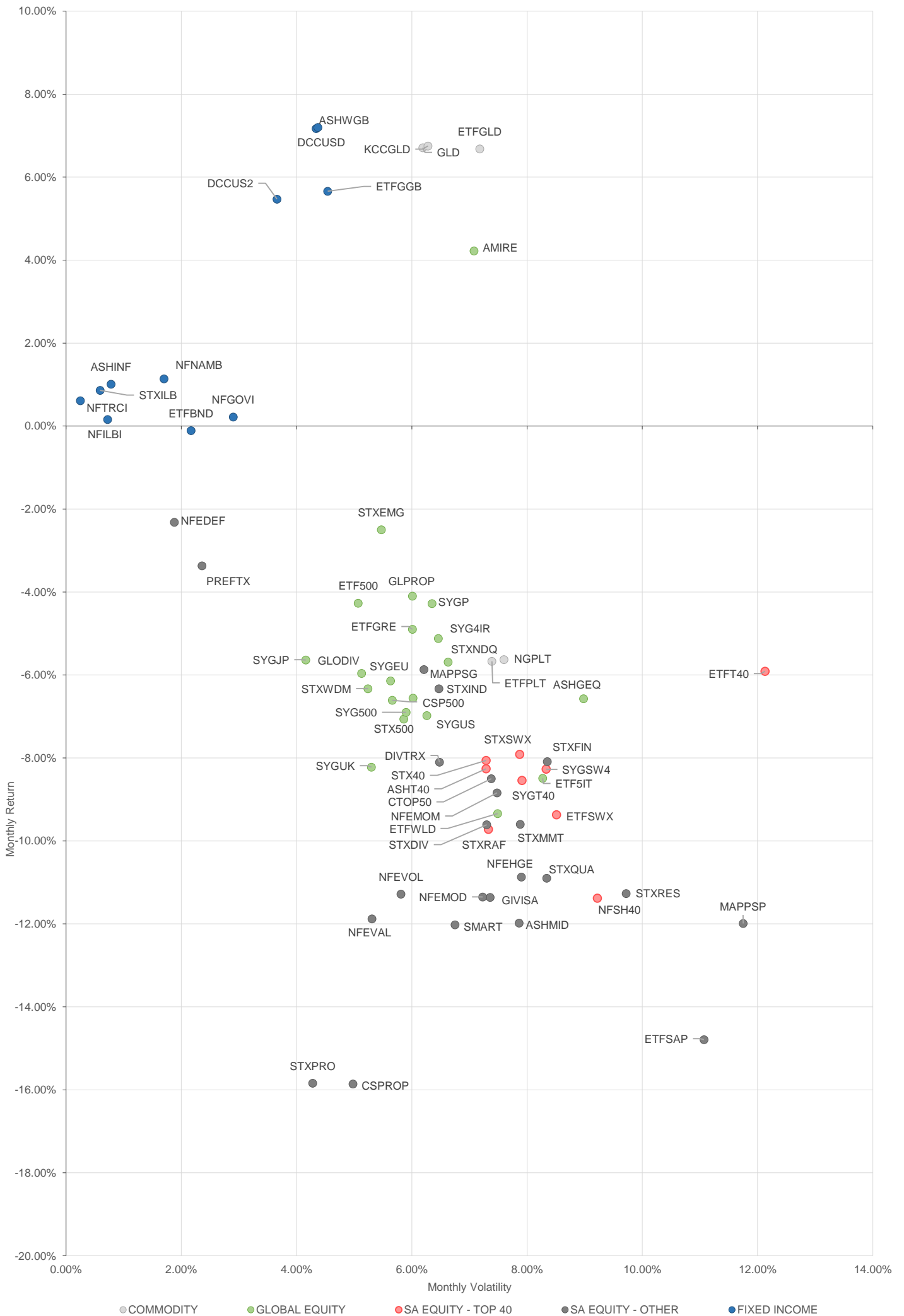
MONTHLY ETF TRADE STATISTICS | Top & Bottom Five Funds

TOP 5 INSTRUMENTS	CODE	VOLUME	VALUE	TRADES	LIQUIDITY
1invest Platinum	ETFPLT	6,967,766	R1,023,010,413.00	241	27.22%
Satrix 40	STX40	11,240,247	R562,486,140.80	2,859	6.57%
Sygnia Itrix MSCI World	SYGWD	9,430,896	R335,100,739.40	2,184	3.77%
1invest S&P 500 IT	ETF5IT	7,613,364	R71,239,505.03	1,428	38.01%
Satrix DIVI	STXDIV	20,993,991	R47,295,730.48	699	3.23%

BOTTOM 5 INSTRUMENTS	CODE	VOLUME	VALUE	TRADES	LIQUIDITY
Dollar Custodial Certificate	DCCUSD	6,486	R9,916,844.40	70	7.63%
KR Custodial Certificate	KCCGLD	108	R2,666,117.00	10	0.34%
2YR Dollar Custodial Certificate	DCCUS2	597	R912,148.65	38	1.30%
Cloud Atlas AMI RealEstate ex-SA	AMIRE	1,211	R39,762.42	21	4.33%
NewFunds VM Def Equity	NFEDEF	483	R4,557.32	14	0.01%

Volume, Value and Trades are the aggregate counts of all trade activity in the ETF for the month on the JSE equity market. This includes central order book and reported trades, but excludes creations and redemptions. Liquidity is the total volume traded expressed as a percentage of the number of listed instruments for the ETF as at the end of the month.

TOTAL RETURN VERSUS VOLATILITY



MONTHLY DETAILED ETF INFORMATION

SA EQUITY | TOP 40

Prices in Rands | In Rands | Values in Mn's | in 000's | in Mn's |

INVEST	CODE	START	LOW	HIGH	END	1M %	DISTRIBUTION	MCAP OPEN	MCAP CLOSE	VOL	VALUE	TRADES
Invest SWIX 40	ETFSWX	10.78	9.06	11.20	9.77	-9.37	--	1838.86	1666.58	0.15	1.55	58.00
Invest Top 40	ETFT40	48.89	45.18	52.51	46.00	-5.91	--	1220.43	1148.98	0.08	3.96	124.00
ASHBURTON												
Ashburton Top 40	ASHT40	50.22	44.50	53.96	46.07	-8.26	--	1498.48	1374.65	2.87	146.54	417.00
SATRIX MANAGERS												
Satrix 40	STX40	50.11	44.09	52.54	46.07	-8.06	--	8653.60	7882.21	11.24	562.49	2859.00
Satrix SWIX Top 40	STXSWX	10.62	9.55	11.15	9.78	-7.91	--	362.33	331.72	0.64	6.86	194.00
SYGNIA ITRIX												
Sygnia Itrix SWIX 40	SYGSW4	10.64	9.83	11.18	9.76	-8.27	--	203.13	186.33	0.15	1.58	41.00
Sygnia Itrix Top 40	SYGT40	50.37	46.61	52.69	46.07	-8.54	--	221.62	202.70	0.11	5.49	71.00

SA EQUITY | OTHER

Prices in Rands | In Rands | Values in Mn's | in 000's | in Mn's |

INVEST	CODE	START	LOW	HIGH	END	1M %	DISTRIBUTION	MCAP OPEN	MCAP CLOSE	VOL	VALUE	TRADES
Invest SA Property	ETFSAP	43.00	35.70	43.28	36.64	-14.79	--	193.41	191.92	1.52	60.89	405.00
ASHBURTON												
Ashburton Mid Cap	ASHMID	7.51	6.50	7.73	6.61	-11.98	--	409.30	360.25	2.76	20.12	413.00
COESHARES												
CoreShares DivTrax	DIVTRX	24.56	22.50	25.34	22.57	-8.10	--	303.48	236.00	1.30	32.00	201.00
CoreShares Top 50	CTOP50	22.35	20.46	23.28	20.45	-8.50	--	1387.50	1279.77	0.94	21.07	250.00
CoreShares SciBeta M-FI	SMART	43.36	38.28	43.91	38.15	-12.02	--	121.63	107.02	0.10	4.30	171.00
CoreShares PrefTrax	PREFTX	9.21	8.79	9.35	8.90	-3.37	--	356.18	344.19	1.50	13.61	299.00
CoreShares SA Property	CSPROP	13.81	11.58	13.90	11.62	-15.86	--	369.02	303.53	3.34	43.49	624.00
ABSA NEWFUNDS												
NewFunds Equity Momentum	NFEMOM	36.43	33.29	37.92	33.21	-8.84	--	218.22	215.54	0.54	19.99	157.00
Newfunds MAPPs Growth	MAPPSG	21.79	20.57	22.83	20.51	-5.87	--	39.37	37.06	0.04	0.79	55.00
Newfunds MAPPs Protect	MAPPSP	38.27	37.12	39.10	33.68	-11.99	--	42.43	37.34	0.01	0.56	44.00
NewFunds S&P GIVI SA Top 50	GIVISA	39.60	35.38	40.47	35.10	-11.36	--	81.47	72.21	0.05	2.08	65.00
NewFunds Shari'ah	NFSH40	3.25	2.86	3.40	2.88	-11.38	--	50.62	44.86	0.36	1.18	71.00
NewFunds Equity Value	NFEVAL	9.09	8.04	9.19	8.01	-11.88	--	109.25	100.27	0.03	0.23	26.00
NewFunds Low Volatility	NFEVOL	10.55	9.36	10.73	9.36	-11.28	--	128.21	113.74	0.16	1.71	51.00
NewFunds VM Def Equity	NFEDEF	9.49	9.24	9.56	9.27	-2.32	--	49.20	48.05	0.00	0.00	14.00
NewFunds VM High Growth	NFEHGE	10.95	9.89	11.30	9.76	-10.87	--	58.86	52.46	0.40	4.37	60.00
NewFunds VM ModEquity	NFEMOD	9.69	8.64	9.88	8.59	-11.35	--	53.92	47.80	0.33	3.08	37.00
SATRIX MANAGERS												
Satrix DIVI	STXDIV	2.29	2.04	2.34	2.07	-9.61	--	1512.29	1344.24	20.99	47.30	699.00
Satrix FINI	STXFIN	14.83	13.28	15.49	13.63	-8.09	--	699.04	642.48	6.45	92.84	389.00
Satrix INDI	STXIND	68.67	62.70	72.11	64.32	-6.33	--	1805.23	1678.01	0.80	56.06	426.00
Satrix Momentum	STXMMT	10.63	9.63	11.14	9.61	-9.60	--	29.85	26.98	0.24	2.48	81.00
Satrix Property	STXPRO	13.45	11.21	13.56	11.32	-15.84	--	224.23	201.17	1.91	24.15	377.00
Satrix Quality SA	STXQUA	7.98	7.10	8.15	7.11	-10.90	--	112.81	100.51	0.28	2.16	110.00
Satrix RAFI 40	STXRAF	14.29	12.91	14.80	12.89	-9.80	0.01	932.81	841.42	1.17	16.61	273.00
Satrix RESI	STXRES	48.43	42.67	51.40	42.97	-11.27	--	425.60	386.21	0.95	46.49	490.00

GLOBAL EQUITY

Prices in Rands | In Rands | Values in Mn's | in 000's | in Mn's |

INVEST	CODE	START	LOW	HIGH	END	1M %	DISTRIBUTION	MCAP OPEN	MCAP CLOSE	VOL	VALUE	TRADES
Invest Global REIT	ETFGRE	21.02	20.12	22.50	19.99	-4.90	--	91.00	118.53	1.97	42.57	265.00
Invest MSCI World	ETFWLD	47.22	43.05	49.44	42.81	-9.34	--	84.38	77.57	0.04	1.97	131.00
Invest S&P 500	ETF500	242.63	225.30	255.82	232.28	-4.27	--	24.24	34.82	0.01	2.26	191.00
Invest S&P 500 IT	ETF5IT	9.07	7.85	9.84	8.30	-8.49	--	121.08	166.24	7.61	71.24	1428.00
ASHBURTON												
Ashburton Global Equity	ASHGEQ	51.51	45.05	56.98	47.94	-6.93	0.20	610.34	578.59	0.77	39.91	647.00
CLOUD ATLAS												
Cloud Atlas AMI Big50 ex-SA	AMIB50	12.63	12.00	12.80	12.33	-2.38	--	24.92	24.57	0.03	0.31	55.00
Cloud Atlas AMI RealEstate ex-SA	AMIRE	30.31	30.62	33.28	31.59	4.22	--	0.85	0.88	0.00	0.04	21.00
COESHARES												
CoreShares Global Property	GLPROP	41.01	39.48	43.00	39.33	-4.10	--	520.71	505.35	0.65	27.24	423.00
CoreShares Global DivTrax	GLDIV	13.75	12.80	14.16	12.93	-5.96	--	555.69	534.13	2.72	37.25	773.00
CoreShares S&P 500	CSP500	48.93	43.46	51.82	45.72	-6.56	--	977.31	929.51	0.98	48.18	857.00
SATRIX MANAGERS												
Satrix MSCI Emerging Markets	STXEMG	42.78	41.74	45.79	41.71	-2.50	--	713.26	732.96	1.50	65.90	749.00
Satrix MSCI World Feeder	STXWDM	47.25	44.04	49.98	44.26	-6.33	--	2861.94	2751.65	4.17	199.09	1457.00
Satrix Nasdaq 100	STXNDQ	76.62	71.00	83.98	72.26	-5.69	--	760.14	781.92	3.01	236.05	1276.00
Satrix S&P 500 Feeder	STX500	48.60	44.99	51.97	45.17	-7.06	--	897.84	879.64	3.65	179.53	1220.00

MONTHLY DETAILED ETF INFORMATION

GLOBAL EQUITY (continued)

		Prices in Rands				In Rands		Values in Mn's		in 000's in Mn's		
SYGNIA ITRIX	CODE	START	LOW	HIGH	END	1M %	DISTRIBUTION	MCAP OPEN	MCAP CLOSE	VOL	VALUE	TRADES
Sygnia Itrix 4th Industrial Rev	SYG4IR	29.70	27.96	32.00	28.18	-7.06	--	634.10	538.46	2.88	88.58	902.00
Sygnia Itrix EUROSTOXX50	SYGEU	60.73	55.01	63.42	57.00	-6.14	--	2763.82	2594.06	0.88	53.49	675.00
Sygnia Itrix FTSE100	SYGUK	143.51	131.68	146.00	131.72	-8.22	--	855.32	785.05	0.22	30.47	524.00
Sygnia Itrix Global Property	SYGP	42.03	40.66	44.01	40.23	-4.28	--	261.97	250.76	0.38	16.08	230.00
Sygnia Itrix MSCI Japan	SYGJP	13.82	12.95	14.26	13.04	-5.64	--	748.65	706.40	1.88	25.84	362.00
Sygnia Itrix MSCI US	SYGUS	45.83	42.26	48.43	42.63	-6.98	--	5460.83	5079.54	3.65	167.31	1422.00
Sygnia Itrix MSCI World	SYGWD	35.38	32.85	36.89	33.04	-6.61	--	8800.98	8270.01	9.43	335.10	2184.00
Sygnia Itrix S&P 500	SYG500	49.31	45.58	51.94	45.91	-6.90	--	1157.44	1141.90	2.14	106.64	661.00

COMMODITIES

		Prices in Rands				In Rands		Values in Mn's		in 000's in Mn's		
INVEST	CODE	START	LOW	HIGH	END	1M %	DISTRIBUTION	MCAP OPEN	MCAP CLOSE	VOL	VALUE	TRADES
1Invest Gold	ETFGLD	232.29	223.35	252.57	247.81	6.68	--	1614.42	1672.72	0.29	65.79	149.00
1Invest Palladium	ETFPLD	335.50	327.35	430.21	401.50	19.67	--	3766.66	3074.71	3.56	1,282.7	664.00
1Invest Platinum	ETFPLT	140.60	131.97	149.28	132.63	-5.67	--	2372.63	3395.33	6.97	1,023.01	241.00
1Invest Rhodium	ETFRHO	1467.50	1477.00	1999.95	1777.91	21.15	--	800.60	969.95	0.04	73.39	854.00

FIRSTRAND BANK	CODE	START	LOW	HIGH	END	1M %	DISTRIBUTION	MCAP OPEN	MCAP CLOSE	VOL	VALUE	TRADES
KR Custodial Certificate	KCCGLD	24395.50	24241.00	26317.00	26042.00	6.75	--	768.82	820.71	0.00	2.67	10.00

ABSA	CODE	START	LOW	HIGH	END	1M %	DISTRIBUTION	MCAP OPEN	MCAP CLOSE	VOL	VALUE	TRADES
NewGold	GLD	222.40	213.96	241.51	237.33	6.71	--	14651.25	14566.83	6.83	1,558.53	4463.00
NewPlatinum	NGPLT	139.49	132.04	147.72	131.64	-5.63	--	14506.96	13387.79	5.16	723.37	1197.00
NewPalladium	NGPLD	334.10	326.24	425.64	403.54	20.78	--	1002.20	1170.14	0.36	128.60	385.00

SA & GLOBAL FIXED INCOME

		Prices in Rands				In Rands		Values in Mn's		in 000's in Mn's		
INVEST	CODE	START	LOW	HIGH	END	1M %	DISTRIBUTION	MCAP OPEN	MCAP CLOSE	VOL	VALUE	TRADES
1Invest Govt Bond	ETFGBB	84.46	82.59	91.07	89.24	5.66	--	16.21	17.13	0.15	12.63	228.00
1Invest SA Bond	ETFBND	73.35	73.35	75.30	73.27	-0.11	--	7.33	7.33	0.02	1.72	47.00

ASHBURTON	CODE	START	LOW	HIGH	END	1M %	DISTRIBUTION	MCAP OPEN	MCAP CLOSE	VOL	VALUE	TRADES
Ashburton World Global Bond	ASHWGB	7.60	7.46	8.19	8.12	6.84	0.02	122.62	131.01	1.37	10.65	198.00
Ashburton Inflation	ASHINF	19.86	19.77	20.15	20.06	1.01	--	318.45	321.66	0.22	4.39	117.00

FIRSTRAND BANK	CODE	START	LOW	HIGH	END	1M %	DISTRIBUTION	MCAP OPEN	MCAP CLOSE	VOL	VALUE	TRADES
2YR Dollar Custodial Certificate	DCCUS2	1498.70	1476.30	1584.25	1580.75	5.47	--	68.94	72.71	0.00	0.91	38.00
Dollar Custodial Certificate	DCCUSD	1538.70	1502.00	1654.70	1649.45	7.20	--	130.79	140.20	0.01	9.92	70.00

ABSA NEWFUNDS	CODE	START	LOW	HIGH	END	1M %	DISTRIBUTION	MCAP OPEN	MCAP CLOSE	VOL	VALUE	TRADES
NewFunds TRACI 3-Month	NFTRCI	26.44	26.42	26.67	26.60	0.61	--	219.89	221.22	1.21	32.16	202.00
NewFunds GOVI	NFGOVI	68.37	67.20	71.00	68.00	-0.54	0.52	1054.21	1082.50	1.10	75.41	604.00
NewFunds ILBI	NFILBI	70.08	69.45	70.40	70.01	-0.10	0.18	63.07	63.01	0.02	1.14	82.00
NewFunds Namibia Bond	NFNAMB	14.02	14.01	14.22	14.18	1.14	--	250.43	253.29	0.11	1.57	31.00

SATRIX MANAGERS	CODE	START	LOW	HIGH	END	1M %	DISTRIBUTION	MCAP OPEN	MCAP CLOSE	VOL	VALUE	TRADES
Satrix ILBI	STXILB	5.80	5.76	5.88	5.85	0.86	--	58.09	58.59	1.18	6.89	80.00

The information, data and compilations, or any part thereof, which make up the JSE ETF Factsheet ("Data") is being provided to you strictly for informational purposes. JSE Limited ("JSE") reserves the right to withdraw, modify, or replace the Data (or any part thereof) at any time.

To the extent allowed by law, JSE does not (expressly, tacitly or impliedly) guarantee or warrant the availability, sequence, accuracy, completeness, reliability or any other aspect of any of the Data or that the Data contained therein is up to date. To the extent allowed by law, neither the JSE nor any of its directors, officers, employees, contractors, agents or representatives are liable to any way to the reader/user or to any other natural or juristic person (Person) for any loss or damage as a result of any errors contained in the specification, for any loss arising from use of, or reliance on the Data in this JSE ETF Factsheet or any actions taken or not taken by or behalf of any Person in reliance on any Data in this JSE ETF Factsheet. You may not copy, reproduce, redistribute, alter or transmit any Data without the prior written consent of the JSE.

The Johannesburg Stock Exchange prides itself on a 130 year history as an effective, reputable trading platform. We are currently ranked the 19th largest stock exchange in the world based on market capitalization, and the largest exchange on the African continent. The JSE offers secure and efficient primary and secondary capital markets across a diverse range of asset classes which include equities, commodities, currencies, interest rates and bonds. We are the exchange of choice for local and international investors looking for investment opportunities across leading capital markets in South Africa and the broader African continent.

The JSE's achievements escalate through to this year's 20th anniversary of the first ETF listing on the local Exchange Traded Fund (ETF) market. Today, the ETF market capitalization is close to R90bn with over 70 listed ETFs on the JSE Main Board.

Our Primary Markets Team is a key access point for existing and/or potential issuers to gain exposure to local and international investor capital. The team focuses on listing companies and instruments on the Equity (Main Board and AltX) or Debt Market and aids in product development.

Contact the team: listingontheJSE@jse.co.za

Our Information Services Team works to deliver world class market data to our clients. This data can often be customized on request providing our clients with the exact Intel required to make business and portfolios decisions.

We offer live, delayed, end of day, reference and historical market data for:

- Equities
- Indices
- Equity Derivatives
- Commodity Derivatives
- Commodity Derivatives
- Currency Derivatives
- Interest Rate Derivatives
- Bonds
- Market Announcements (SENS)

We have nearly 170 indices across a wide variety of methodologies and investment criteria.

Our partnership with FTSE Russell includes:

- FTSE/JSE All Share
- FTSE/JSE Top 40
- FTSE/JSE ESG
- FTSE/JSE Factor Indices
- FTSE/JSE Shariah
- FTSE/JSE RAFI and many more

We develop customised indices to suit your needs.

- Our other service offerings include:
- Bond ETP data
- Tick data
- Corporate Actions
- Business Intelligence Reports
- Valuations

Contact the team: mdclients@jse.co.za