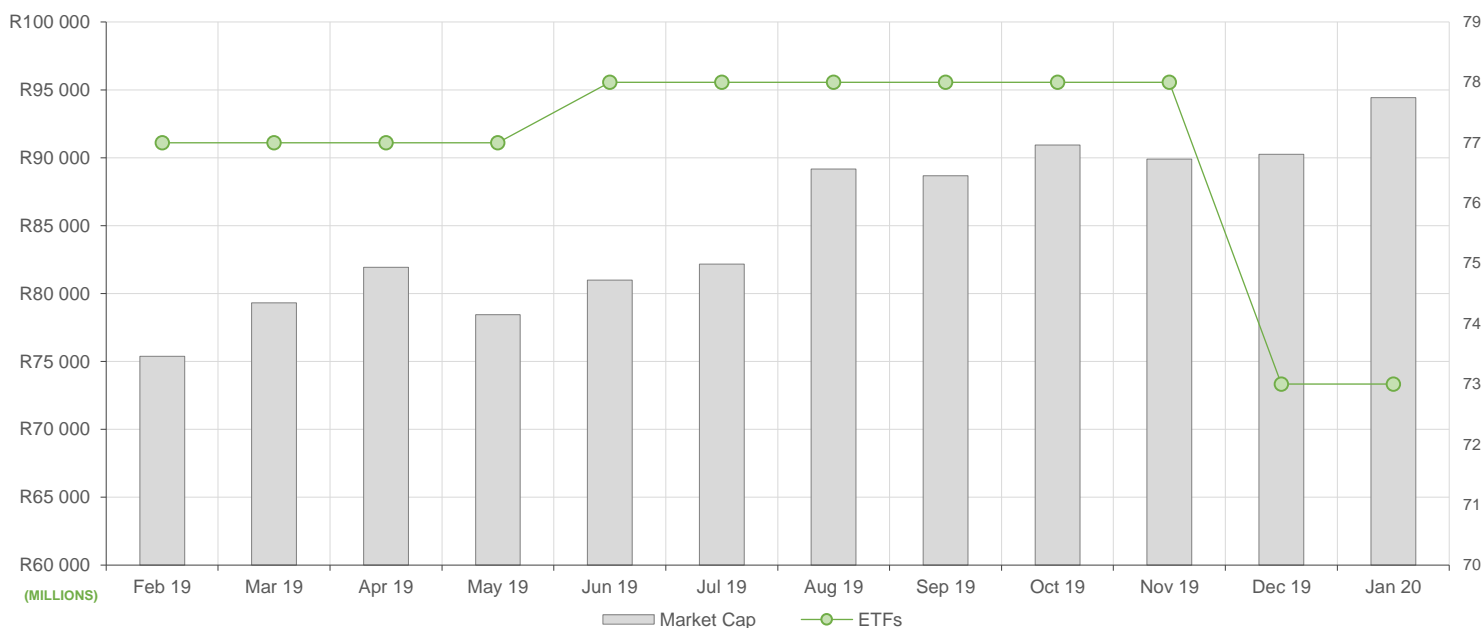


NEW LISTINGS AND DELISTINGS

| ETF | CODE | ISSUER | EVENT | DATE |
|-----|------|--------|-------|------|
| -- | -- | -- | -- | -- |

MARKET CAPITALISATION ANALYSIS | Total Industry



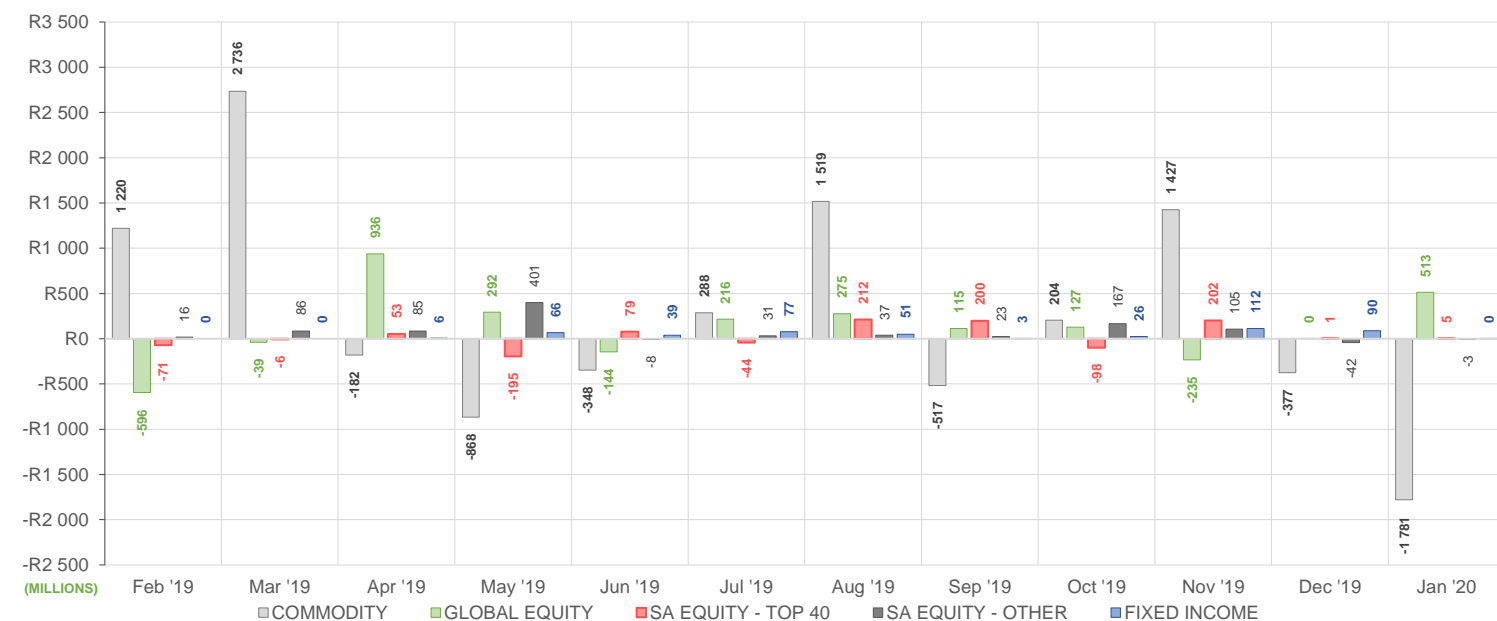
NET DAILY EXCHANGE CREATIONS AND REDEMPTIONS | Top & Bottom Five ETFs

| TOP 5 INSTRUMENTS | CODE | TOTAL DAILY CREATIONS | TOTAL DAILY REDEMPTIONS | NET MONTHLY CREATIONS |
|------------------------------|--------|-----------------------|-------------------------|-----------------------|
| Sygnia Itrix EUROSTOXX50 | SYGEU | R236 707 142 | --- | R236 707 142 |
| 1invest Platinum | ETFPLT | R223 387 000 | --- | R223 387 000 |
| Sygnia Itrix S&P 500 | SYG500 | R181 483 451 | --- | R181 483 451 |
| Satrix MSCI Emerging Markets | STXEMG | R78 622 500 | -R4 290 000 | R74 332 500 |
| Satrix MSCI World Feeder | STXWDM | R191 552 000 | -R145 227 000 | R46 325 000 |

| BOTTOM 5 INSTRUMENTS | CODE | TOTAL DAILY CREATIONS | TOTAL DAILY REDEMPTIONS | NET MONTHLY CREATIONS |
|----------------------|--------|-----------------------|-------------------------|-----------------------|
| NewPlatinum | NGPLT | R26 928 000 | -R126 890 500 | -R99 962 500 |
| Sygnia Itrix MSCI US | SYGUS | --- | -R112 156 300 | -R112 156 300 |
| 1invest Rhodium | ETFRHO | --- | -R124 606 925 | -R124 606 925 |
| NewPalladium | NGPLD | --- | -R428 312 150 | -R428 312 150 |
| 1invest Palladium | ETFPLD | R67 149 000 | -R1 341 657 350 | -R1 274 508 350 |

Considers the daily update to total number of issued units listed on the exchange over the calendar month, with Creations representing a day-on-day increase in total number of listed units, and Redemptions representing a decrease. An average day-on-day price is used to estimate the ZAR value of each net daily movement. No secondary market transactions are considered.

NET MONTHLY EXCHANGE CREATIONS AND REDEMPTIONS



MONTHLY ETF PERFORMANCE | Top & Bottom Five ETFs

| TOP 5 INSTRUMENTS | CODE | TOTAL RETURN | VOLATILITY | MAX DRAW DOWN |
|--------------------|--------|--------------|------------|---------------|
| 1invest Rhodium | ETFRHO | 79.22% | 17.21% | -4.75% |
| 1invest Palladium | ETFPLD | 27.41% | 11.16% | -10.30% |
| NewPalladium | NGPLD | 26.83% | 9.67% | -8.09% |
| 1invest S&P 500 IT | ETF5IT | 12.53% | 4.94% | -1.80% |
| Satrix Nasdaq 100 | STXNDQ | 11.45% | 4.20% | -2.09% |

| BOTTOM 5 INSTRUMENTS | CODE | TOTAL RETURN | VOLATILITY | MAX DRAW DOWN |
|------------------------|--------|--------------|------------|---------------|
| Satrix DIVI | STXDIV | -4.22% | 4.37% | -6.15% |
| CoreShares SA Property | CSPROP | -4.57% | 2.32% | -7.42% |
| Satrix Property | STXPRO | -4.63% | 2.74% | -9.18% |
| Satrix FINI | STXFIN | -5.57% | 4.49% | -7.02% |
| Satrix Quality SA | STXQUA | -5.63% | 4.91% | -7.64% |

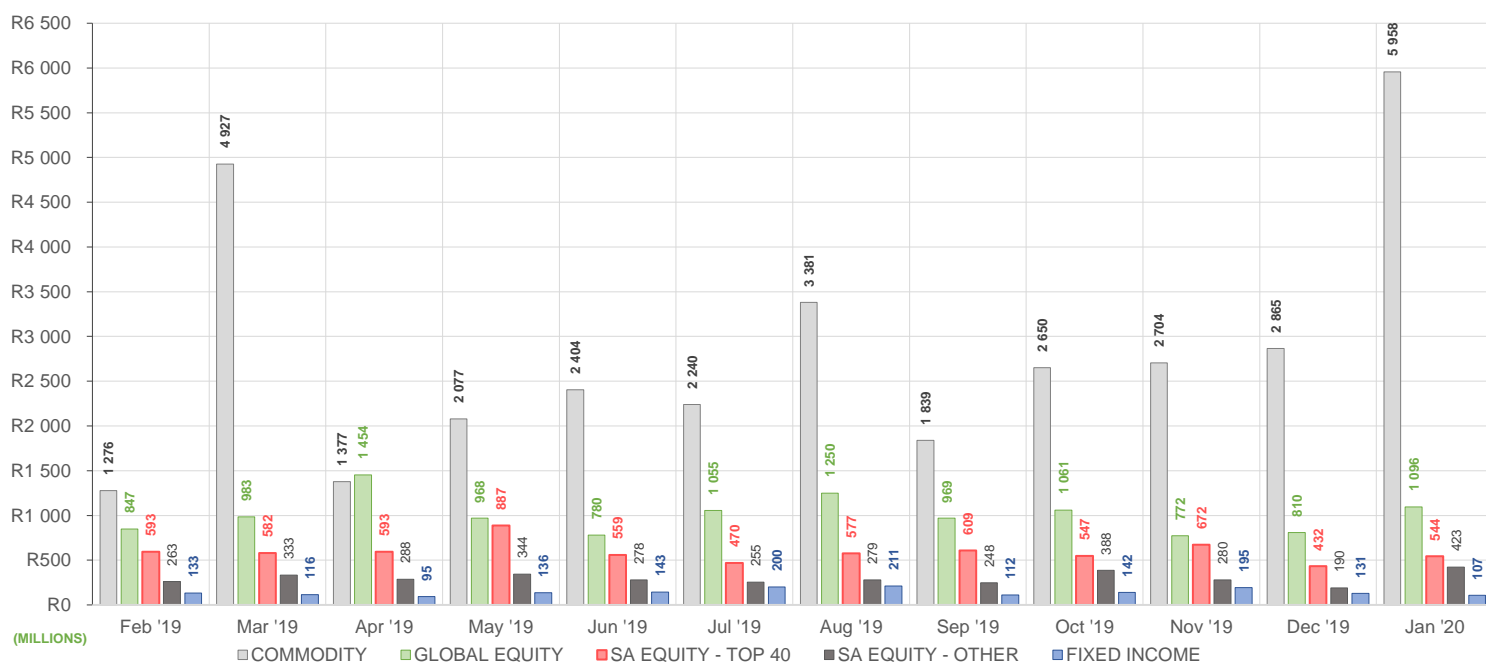
ROLLING 12-MONTH ETF PERFORMANCE | Top & Bottom Five ETFs

| TOP 5 INSTRUMENTS | CODE | TOTAL RETURN | VOLATILITY | MAX DRAW DOWN |
|---------------------------------|--------|--------------|------------|---------------|
| 1invest Rhodium | ETFRHO | 94.67% | 21.28% | -5.69% |
| NewPalladium | NGPLD | 86.65% | 25.55% | -20.12% |
| Satrix Nasdaq 100 | STXNDQ | 51.06% | 17.19% | -9.79% |
| Sygnia Itrix 4th Industrial Rev | SYG4IR | 41.32% | 20.99% | -10.71% |
| Sygnia Itrix S&P 500 | SYG500 | 40.02% | 16.93% | -6.97% |

| BOTTOM 5 INSTRUMENTS | CODE | TOTAL RETURN | VOLATILITY | MAX DRAW DOWN |
|----------------------------------|--------|--------------|------------|---------------|
| NewFunds Equity Value | NFEVAL | -4.37% | 13.27% | -14.27% |
| CoreShares SA Property | CSPROP | -4.84% | 4.18% | -20.09% |
| Satrix FINI | STXFIN | -11.07% | 19.06% | -19.43% |
| Cloud Atlas AMI RealEstate ex-SA | AMIRE | -13.72% | 152.10% | -59.36% |
| Satrix Property | STXPRO | -15.48% | 14.43% | -23.04% |

Total Return is the monthly/annual performance incorporating price performance and immediate reinvestment of dividends. Volatility is the based on daily price standard deviation and presented as a monthly/annual volatility. Maximum draw down measures the worst case return outcome for an investor over the course of the period – based on purchase and subsequent sale timing that results in the largest loss of capital.

MONTHLY VALUE TRADED FOR ALL ETFs



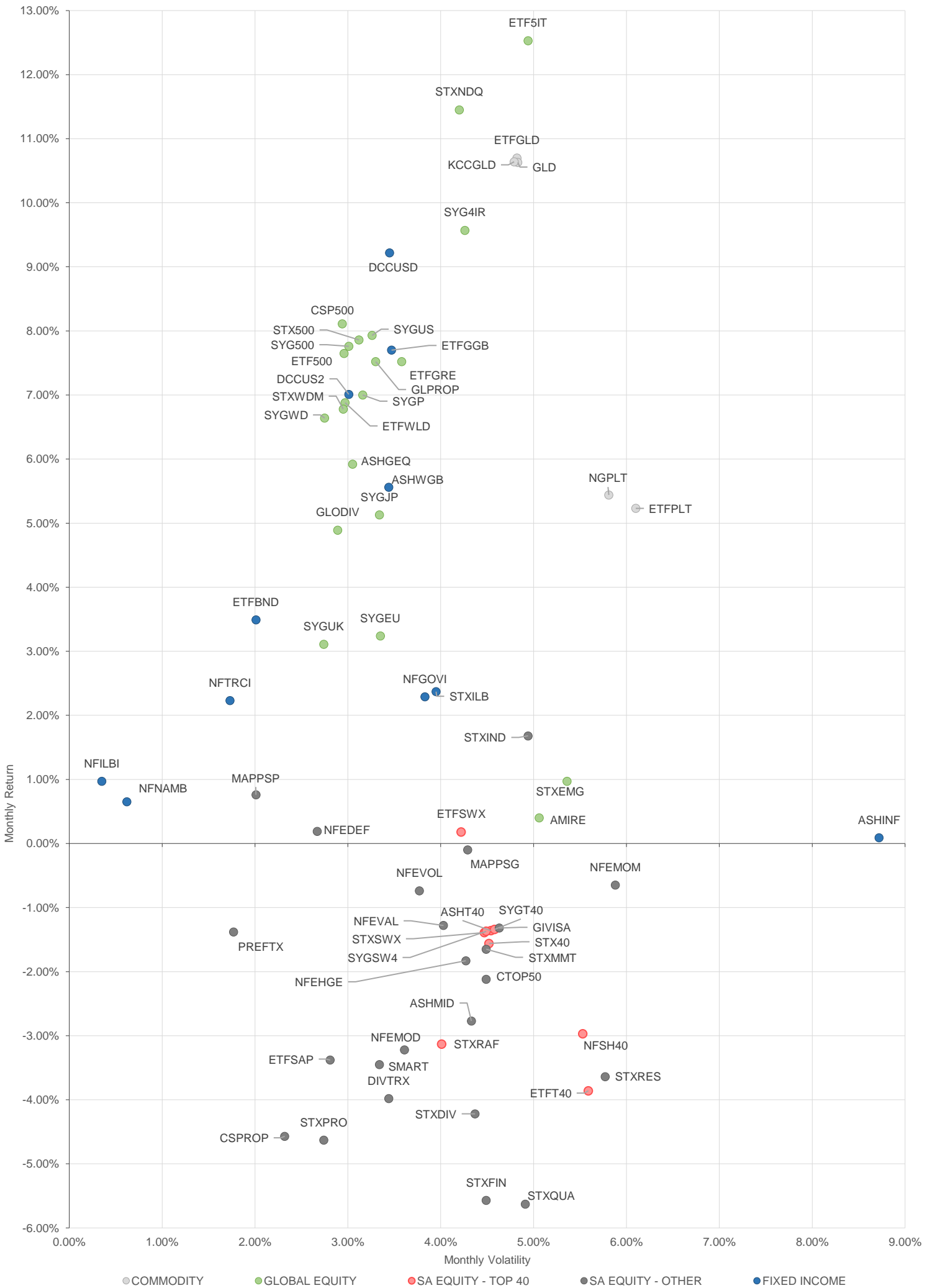
MONTHLY ETF TRADE STATISTICS | Top & Bottom Five Funds

| TOP 5 INSTRUMENTS | CODE | VOLUME | VALUE | TRADES | LIQUIDITY |
|-------------------------|--------|------------|-------------------|--------|-----------|
| NewGold | GLD | 12 359 532 | R2 640 991 937.00 | 4 767 | 18.76% |
| NewPlatinum | NGPLT | 7 140 485 | R996 635 761.40 | 1 838 | 6.87% |
| Satrix 40 | STX40 | 7 521 754 | R386 142 535.70 | 2 511 | 4.36% |
| Sygnia Itrix MSCI World | SYGWD | 6 301 084 | R219 045 709.90 | 1 613 | 2.53% |
| Satrix DIVI | STXDIV | 15 557 592 | R36 519 792.58 | 693 | 2.36% |

| BOTTOM 5 INSTRUMENTS | CODE | VOLUME | VALUE | TRADES | LIQUIDITY |
|----------------------------------|--------|--------|---------------|--------|-----------|
| Dollar Custodial Certificate | DCCUSD | 2 878 | R4 233 489.30 | 43 | 3.39% |
| 1invest S&P500 | ETF500 | 7 077 | R1 666 281.37 | 140 | 7.08% |
| KR Custodial Certificate | KCCGLD | 4 | R93 744.00 | 2 | 0.01% |
| NewFunds VM Def Equity | NFEDEF | 6 268 | R59 841.35 | 12 | 0.12% |
| Cloud Atlas AMI RealEstate ex-SA | AMIRE | 622 | R18 492.64 | 15 | 2.22% |

Volume, Value and Trades are the aggregate counts of all trade activity in the ETF for the month on the JSE equity market. This includes central order book and reported trades, but excludes creations and redemptions. Liquidity is the total volume traded expressed as a percentage of the number of listed instruments for the ETF as at the end of the month.

TOTAL RETURN VERSUS VOLATILITY



MONTHLY DETAILED ETF INFORMATION

SA EQUITY | TOP 40

| INVEST | CODE | Prices in Rands | | | | END | 1M % | DISTRIBUTION | Values in Mn's | | in 000's in Mn's | | |
|-----------------|--------|-----------------|-------|-------|-------|-------|------|--------------|----------------|------------|--------------------|--------|--------|
| | | START | LOW | HIGH | END | | | | MCAP OPEN | MCAP CLOSE | VOL | VALUE | TRADES |
| 1Invest SWIX 40 | ETFSWX | 10.81 | 10.56 | 11.14 | 10.78 | -0.28 | 0.05 | 1849.93 | 1838.86 | 0.55 | 6.00 | 52.00 | |
| 1Invest Top 40 | ETFT40 | 51.02 | 49.50 | 53.23 | 48.89 | -4.17 | 0.17 | 1275.14 | 1220.43 | 0.04 | 2.07 | 102.00 | |

| ASHBURTON | CODE | START | LOW | HIGH | END | 1M % | DISTRIBUTION | MCAP OPEN | MCAP CLOSE | VOL | VALUE | TRADES |
|------------------|--------|-------|-------|-------|-------|-------|--------------|-----------|------------|------|--------|--------|
| Ashburton Top 40 | ASHT40 | 51.08 | 49.65 | 54.53 | 50.22 | -1.68 | 0.17 | 1524.14 | 1498.48 | 2.09 | 108.09 | 311.00 |

| SATRIX MANAGERS | CODE | START | LOW | HIGH | END | 1M % | DISTRIBUTION | MCAP OPEN | MCAP CLOSE | VOL | VALUE | TRADES |
|--------------------|--------|-------|-------|-------|-------|-------|--------------|-----------|------------|------|--------|---------|
| Satrix 40 | STX40 | 51.08 | 49.56 | 52.91 | 50.11 | -1.90 | 0.18 | 8821.11 | 8653.60 | 7.52 | 386.14 | 2511.00 |
| Satrix SWIX Top 40 | STXSXW | 10.81 | 10.49 | 11.14 | 10.62 | -1.76 | 0.04 | 370.98 | 362.33 | 0.73 | 8.01 | 178.00 |

| SYGNIA ITRIX | CODE | START | LOW | HIGH | END | 1M % | DISTRIBUTION | MCAP OPEN | MCAP CLOSE | VOL | VALUE | TRADES |
|----------------------|--------|-------|-------|-------|-------|-------|--------------|-----------|------------|------|-------|--------|
| Sygnia Itrix SWIX 40 | SYGSW4 | 10.95 | 10.57 | 11.20 | 10.64 | -2.83 | 0.17 | 209.05 | 203.13 | 0.27 | 2.89 | 39.00 |
| Sygnia Itrix Top 40 | SYGT40 | 51.91 | 49.84 | 54.02 | 50.37 | -2.97 | 0.87 | 212.30 | 221.62 | 0.19 | 9.81 | 69.00 |

SA EQUITY | OTHER

| INVEST | CODE | Prices in Rands | | | | END | 1M % | DISTRIBUTION | Values in Mn's | | in 000's in Mn's | | |
|---------------------|--------|-----------------|-------|-------|-------|-------|------|--------------|----------------|------------|--------------------|--------|--------|
| | | START | LOW | HIGH | END | | | | MCAP OPEN | MCAP CLOSE | VOL | VALUE | TRADES |
| 1Invest SA Property | ETFSAP | 46.21 | 42.18 | 46.81 | 43.00 | -6.95 | 1.70 | 200.60 | 193.41 | 0.55 | 23.78 | 231.00 | |

| ASHBURTON | CODE | START | LOW | HIGH | END | 1M % | DISTRIBUTION | MCAP OPEN | MCAP CLOSE | VOL | VALUE | TRADES |
|-------------------|--------|-------|------|------|------|-------|--------------|-----------|------------|------|-------|--------|
| Ashburton Mid Cap | ASHMID | 7.79 | 7.37 | 8.08 | 7.51 | -3.59 | 0.07 | 424.56 | 409.30 | 2.58 | 19.90 | 363.00 |

| CORESHARES | CODE | START | LOW | HIGH | END | 1M % | DISTRIBUTION | MCAP OPEN | MCAP CLOSE | VOL | VALUE | TRADES |
|-------------------------|--------|-------|-------|-------|-------|-------|--------------|-----------|------------|------|-------|--------|
| CoreShares DivTrax | DIVTRX | 25.70 | 24.52 | 26.15 | 24.56 | -4.44 | 0.12 | 317.56 | 303.48 | 1.50 | 37.51 | 200.00 |
| CoreShares Top 50 | CTOP50 | 22.94 | 22.20 | 23.64 | 22.35 | -2.57 | 0.11 | 1424.13 | 1387.50 | 0.30 | 6.74 | 189.00 |
| CoreShares SciBeta M-FI | SMART | 45.24 | 43.13 | 45.73 | 43.36 | -4.16 | 0.33 | 126.90 | 121.63 | 0.13 | 5.60 | 122.00 |
| CoreShares PrefTrax | PREFTX | 9.43 | 9.11 | 9.64 | 9.21 | -2.33 | 0.09 | 364.68 | 356.18 | 1.06 | 9.81 | 231.00 |
| CoreShares SA Property | CSPROP | 14.73 | 13.65 | 14.89 | 13.81 | -6.25 | 0.25 | 393.61 | 369.02 | 2.31 | 32.25 | 432.00 |

| ABSA NEWFUNDS | CODE | START | LOW | HIGH | END | 1M % | DISTRIBUTION | MCAP OPEN | MCAP CLOSE | VOL | VALUE | TRADES |
|-----------------------------|--------|-------|-------|-------|-------|-------|--------------|-----------|------------|------|-------|--------|
| NewFunds Equity Momentum | NFEMOM | 36.68 | 35.75 | 38.10 | 36.43 | -0.68 | 0.01 | 219.72 | 218.22 | 0.42 | 15.55 | 114.00 |
| NewFunds MAPP5 Growth | MAPP5G | 21.97 | 21.56 | 22.49 | 21.79 | -0.82 | 0.16 | 39.69 | 39.37 | 0.04 | 0.90 | 58.00 |
| NewFunds MAPP5 Protect | MAPP5P | 38.33 | 37.90 | 38.85 | 38.27 | -0.16 | 0.35 | 42.50 | 42.43 | 0.01 | 0.51 | 36.00 |
| NewFunds S&P GIVI SA Top 50 | GIVISA | 40.47 | 39.00 | 41.79 | 39.60 | -2.15 | 0.34 | 83.26 | 81.47 | 0.06 | 2.41 | 53.00 |
| NewFunds Shari'ah | NFSH40 | 3.36 | 3.24 | 3.46 | 3.25 | -3.27 | 0.01 | 52.33 | 50.62 | 0.09 | 0.32 | 61.00 |
| NewFunds Equity Value | NFEVAL | 9.35 | 9.02 | 9.43 | 9.09 | -2.78 | 0.14 | 112.37 | 109.25 | 2.94 | 26.89 | 50.00 |
| NewFunds Low Volatility | NFEVOL | 10.74 | 10.40 | 10.87 | 10.55 | -1.77 | 0.11 | 125.14 | 128.21 | 0.75 | 8.00 | 49.00 |
| NewFunds VM Def Equity | NFEDEF | 9.55 | 9.41 | 9.66 | 9.49 | -0.63 | 0.08 | 49.51 | 49.20 | 0.01 | 0.06 | 12.00 |
| NewFunds VM High Growth | NFEHGE | 11.28 | 10.79 | 11.49 | 10.95 | -2.93 | 0.13 | 60.63 | 58.86 | 1.30 | 14.36 | 52.00 |
| NewFunds VM ModEquity | NFEMOD | 10.07 | 9.65 | 10.12 | 9.69 | -3.77 | 0.06 | 56.03 | 53.92 | 0.13 | 1.29 | 14.00 |

| SATRIX MANAGERS | CODE | START | LOW | HIGH | END | 1M % | DISTRIBUTION | MCAP OPEN | MCAP CLOSE | VOL | VALUE | TRADES |
|-------------------|--------|-------|-------|-------|-------|-------|--------------|-----------|------------|-------|-------|--------|
| Satrix DIVI | STXDIV | 2.41 | 2.26 | 2.45 | 2.29 | -4.98 | 0.02 | 1596.36 | 1512.29 | 15.56 | 36.52 | 693.00 |
| Satrix FINI | STXFIN | 15.83 | 14.71 | 16.02 | 14.83 | -6.32 | 0.12 | 724.02 | 699.04 | 5.53 | 84.21 | 420.00 |
| Satrix INDI | STXIND | 67.69 | 67.00 | 71.98 | 68.67 | 1.45 | 0.16 | 1850.54 | 1805.23 | 0.66 | 45.90 | 394.00 |
| Satrix Momentum | STXMMT | 10.82 | 10.49 | 11.26 | 10.63 | -1.76 | 0.01 | 30.38 | 29.85 | 0.22 | 2.39 | 99.00 |
| Satrix Property | STXPRO | 14.56 | 13.28 | 14.76 | 13.45 | -7.62 | 0.45 | 234.00 | 224.23 | 1.25 | 17.00 | 313.00 |
| Satrix Quality SA | STXQUA | 8.47 | 7.96 | 8.63 | 7.98 | -5.79 | 0.01 | 119.74 | 112.81 | 0.60 | 4.87 | 108.00 |
| Satrix RAFI 40 | STXRAF | 14.76 | 14.12 | 15.04 | 14.29 | -3.18 | 0.01 | 966.44 | 932.81 | 1.41 | 20.46 | 219.00 |
| Satrix RESI | STXRES | 50.27 | 47.58 | 51.89 | 48.43 | -3.66 | 0.01 | 411.61 | 425.60 | 0.65 | 32.53 | 370.00 |

GLOBAL EQUITY

| INVEST | CODE | Prices in Rands | | | | END | 1M % | DISTRIBUTION | Values in Mn's | | in 000's in Mn's | | |
|---------------------|--------|-----------------|--------|--------|--------|-------|------|--------------|----------------|------------|--------------------|--------|--------|
| | | START | LOW | HIGH | END | | | | MCAP OPEN | MCAP CLOSE | VOL | VALUE | TRADES |
| 1Invest Global REIT | ETFGRE | 19.91 | 19.84 | 21.23 | 21.02 | 5.58 | 0.37 | 86.20 | 91.00 | 0.16 | 3.21 | 106.00 | |
| 1Invest MSCI World | ETFWLD | 44.18 | 44.62 | 47.19 | 47.22 | 6.88 | -- | 89.99 | 84.38 | 0.31 | 14.05 | 88.00 | |
| 1Invest S&P 500 | ETF500 | 225.38 | 225.00 | 248.38 | 242.63 | 7.65 | -- | 21.39 | 24.24 | 0.01 | 1.67 | 140.00 | |
| 1Invest S&P 500 IT | ETF5IT | 8.06 | 8.10 | 9.46 | 9.07 | 12.53 | -- | 94.78 | 121.08 | 4.45 | 39.09 | 702.00 | |

| ASHBURTON | CODE | START | LOW | HIGH | END | 1M % | DISTRIBUTION | MCAP OPEN | MCAP CLOSE | VOL | VALUE | TRADES |
|-------------------------|--------|-------|-------|-------|-------|------|--------------|-----------|------------|------|-------|--------|
| Ashburton Global Equity | ASHGEQ | 48.63 | 48.60 | 52.90 | 51.51 | 5.92 | -- | 576.22 | 610.34 | 0.41 | 20.72 | 413.00 |

| CLOUD ATLAS | CODE | START | LOW | HIGH | END | 1M % | DISTRIBUTION | MCAP OPEN | MCAP CLOSE | VOL | VALUE | TRADES |
|----------------------------------|--------|-------|-------|-------|-------|------|--------------|-----------|------------|------|-------|--------|
| Cloud Atlas AMI Big50 ex-SA | AMIB50 | 11.97 | 11.79 | 13.08 | 12.63 | 5.51 | -- | 23.02 | 24.92 | 0.08 | 1.02 | 50.00 |
| Cloud Atlas AMI RealEstate ex-SA | AMIRE | 30.19 | 28.73 | 31.89 | 30.31 | 0.40 | -- | 0.84 | 0.85 | 0.00 | 0.02 | 15.00 |

| CORESHARES | CODE | START | LOW | HIGH | END | 1M % | DISTRIBUTION | MCAP OPEN | MCAP CLOSE | VOL | VALUE | TRADES |
|----------------------------|--------|-------|-------|-------|-------|------|--------------|-----------|------------|------|-------|--------|
| CoreShares Global Property | GLPROP | 38.14 | 38.07 | 41.25 | 41.01 | 7.52 | -- | 475.69 | 520.71 | 0.45 | 17.86 | 310.00 |
| CoreShares Global DivTrax | GLODIV | 13.21 | 13.18 | 14.50 | 13.75 | 4.09 | 0.10 | 499.97 | 555.69 | 3.48 | 47.23 | 893.00 |
| CoreShares S&P 500 | CSP500 | 45.26 | 45.03 | 49.99 | 48.93 | 8.11 | -- | 904.00 | 977.31 | 0.43 | 20.68 | 640.00 |

| SATRIX MANAGERS | CODE | START | LOW | HIGH | END | 1M % | DISTRIBUTION | MCAP OPEN | MCAP CLOSE | VOL | VALUE | TRADES |
|------------------------------|--------|-------|-------|-------|-------|-------|--------------|-----------|------------|------|--------|--------|
| Satrix MSCI Emerging Markets | STXEMG | 42.37 | 42.03 | 45.99 | 42.78 | 0.97 | -- | 634.39 | 713.26 | 2.69 | 117.48 | 824.00 |
| Satrix MSCI World Feeder | STXWDM | 44.25 | 44.25 | 48.06 | 47.25 | 6.78 | -- | 2635.98 | 2861.94 | 2.78 | 128.89 | 953.00 |
| Satrix Nasdaq 100 | STXNDQ | 68.75 | 68.99 | 77.20 | 76.62 | 11.45 | -- | 640.81 | 760.14 | 0.84 | 61.33 | 784.00 |
| Satrix S&P 500 Feeder | STX500 | 45.06 | 45.03 | 49.94 | 48.60 | 7.86 | -- | 809.91 | 897.84 | 1.42 | 66.45 | 670.00 |

MONTHLY DETAILED ETF INFORMATION

GLOBAL EQUITY (continued)

| | | Prices in Rands | | | | In Rands | | Values in Mn's | | in 000's in Mn's | | |
|---------------------------------|--------|-----------------|--------|--------|--------|----------|--------------|----------------|------------|--------------------|--------|---------|
| SYGNIA ITRIX | CODE | START | LOW | HIGH | END | 1M % | DISTRIBUTION | MCAP OPEN | MCAP CLOSE | VOL | VALUE | TRADES |
| Sygnia Itrix 4th Industrial Rev | SYG4IR | 27.14 | 27.20 | 30.75 | 29.70 | 7.86 | -- | 631.14 | 634.10 | 1.31 | 38.22 | 532.00 |
| Sygnia Itrix EUROSTOXX50 | SYGEU | 58.86 | 59.00 | 61.84 | 60.73 | 3.18 | -- | 2447.58 | 2763.82 | 0.54 | 32.80 | 500.00 |
| Sygnia Itrix FTSE100 | SYGUK | 141.74 | 141.02 | 147.90 | 143.51 | 1.25 | 2.64 | 844.77 | 855.32 | 0.12 | 17.99 | 319.00 |
| Sygnia Itrix Global Property | SYGP | 39.82 | 40.11 | 42.27 | 42.03 | 5.55 | 0.57 | 248.20 | 261.97 | 0.38 | 15.53 | 182.00 |
| Sygnia Itrix MSCI Japan | SYGJP | 13.28 | 13.35 | 14.05 | 13.82 | 4.07 | 0.14 | 720.51 | 748.65 | 1.73 | 23.71 | 349.00 |
| Sygnia Itrix MSCI US | SYGUS | 42.61 | 42.68 | 46.20 | 45.83 | 7.56 | 0.16 | 5182.82 | 5460.83 | 3.05 | 135.39 | 1012.00 |
| Sygnia Itrix MSCI World | SYGWD | 33.36 | 33.29 | 35.54 | 35.38 | 6.06 | 0.19 | 8269.80 | 8800.98 | 6.30 | 219.05 | 1613.00 |
| Sygnia Itrix S&P 500 | SYG500 | 46.06 | 45.90 | 49.52 | 49.31 | 7.06 | 0.32 | 908.25 | 1157.44 | 1.53 | 73.67 | 417.00 |

COMMODITIES

| | | Prices in Rands | | | | In Rands | | Values in Mn's | | in 000's in Mn's | | |
|-------------------|--------|-----------------|--------|---------|---------|----------|--------------|----------------|------------|--------------------|----------|--------|
| INVEST | CODE | START | LOW | HIGH | END | 1M % | DISTRIBUTION | MCAP OPEN | MCAP CLOSE | VOL | VALUE | TRADES |
| 1Invest Gold | ETFGLD | 209.84 | 208.90 | 231.50 | 232.29 | 10.70 | -- | 1458.39 | 1614.42 | 0.09 | 19.47 | 125.00 |
| 1Invest Palladium | ETFPLD | 263.33 | 264.70 | 371.17 | 335.50 | 27.41 | -- | 3928.88 | 3766.66 | 4.26 | 1,438.59 | 467.00 |
| 1Invest Platinum | ETFPLT | 133.61 | 134.42 | 146.92 | 140.60 | 5.23 | -- | 2044.23 | 2372.63 | 1.61 | 232.28 | 77.00 |
| 1Invest Rhodium | ETFRHO | 818.84 | 818.11 | 1477.47 | 1467.50 | 79.22 | -- | 524.51 | 800.60 | 0.12 | 152.06 | 926.00 |

| FIRSTSTRAND BANK | CODE | START | LOW | HIGH | END | 1M % | DISTRIBUTION | MCAP OPEN | MCAP CLOSE | VOL | VALUE | TRADES |
|--------------------------|--------|----------|----------|----------|----------|-------|--------------|-----------|------------|------|-------|--------|
| KR Custodial Certificate | KCCGLD | 22050.00 | 22848.00 | 23632.00 | 24395.50 | 10.64 | -- | 694.91 | 768.82 | 0.00 | 0.09 | 2.00 |

| ABSA | CODE | START | LOW | HIGH | END | 1M % | DISTRIBUTION | MCAP OPEN | MCAP CLOSE | VOL | VALUE | TRADES |
|--------------|-------|--------|--------|--------|--------|-------|--------------|-----------|------------|-------|----------|---------|
| NewGold | GLD | 201.03 | 199.53 | 222.79 | 222.40 | 10.63 | -- | 13323.85 | 14651.25 | 12.36 | 2,640.99 | 4767.00 |
| NewPlatinum | NGPLT | 132.29 | 131.44 | 146.07 | 139.49 | 5.44 | -- | 13850.76 | 14506.96 | 7.14 | 996.64 | 1838.00 |
| NewPalladium | NGPLD | 263.42 | 264.21 | 360.00 | 334.10 | 26.83 | -- | 1128.67 | 1002.20 | 1.45 | 477.86 | 529.00 |

SA & GLOBAL FIXED INCOME

| | | Prices in Rands | | | | In Rands | | Values in Mn's | | in 000's in Mn's | | |
|-------------------|--------|-----------------|-------|-------|-------|----------|--------------|----------------|------------|--------------------|-------|--------|
| INVEST | CODE | START | LOW | HIGH | END | 1M % | DISTRIBUTION | MCAP OPEN | MCAP CLOSE | VOL | VALUE | TRADES |
| 1Invest Govt Bond | ETFGBB | 78.42 | 78.00 | 88.00 | 84.46 | 7.70 | -- | 14.66 | 16.21 | 0.01 | 1.04 | 78.00 |
| 1Invest SA Bond | ETFBND | 72.06 | 72.12 | 73.75 | 73.35 | 1.79 | 1.19 | 7.21 | 7.33 | 0.08 | 5.77 | 33.00 |

| ASHBURTON | CODE | START | LOW | HIGH | END | 1M % | DISTRIBUTION | MCAP OPEN | MCAP CLOSE | VOL | VALUE | TRADES |
|-----------------------------|--------|-------|-------|-------|-------|-------|--------------|-----------|------------|------|-------|--------|
| Ashburton World Global Bond | ASHWGB | 7.20 | 7.00 | 7.59 | 7.60 | 5.56 | -- | 116.17 | 122.62 | 0.83 | 6.04 | 138.00 |
| Ashburton Inflation | ASHINF | 20.01 | 19.78 | 20.15 | 19.86 | -0.75 | 0.16 | 320.86 | 318.45 | 0.38 | 7.58 | 137.00 |

| FIRSTSTRAND BANK | CODE | START | LOW | HIGH | END | 1M % | DISTRIBUTION | MCAP OPEN | MCAP CLOSE | VOL | VALUE | TRADES |
|----------------------------------|--------|---------|---------|---------|---------|------|--------------|-----------|------------|------|-------|--------|
| 2YR Dollar Custodial Certificate | DCCUS2 | 1400.55 | 1399.90 | 1500.50 | 1498.70 | 7.01 | -- | 64.43 | 68.94 | 0.01 | 10.93 | 63.00 |
| Dollar Custodial Certificate | DCCUSD | 1408.80 | 1400.00 | 1533.00 | 1538.70 | 9.22 | -- | 119.75 | 130.79 | 0.00 | 4.23 | 43.00 |

| ABSA NEWFUNDS | CODE | START | LOW | HIGH | END | 1M % | DISTRIBUTION | MCAP OPEN | MCAP CLOSE | VOL | VALUE | TRADES |
|------------------------|--------|-------|-------|-------|-------|------|--------------|-----------|------------|------|-------|--------|
| NewFunds TRACI 3-Month | NFTRCI | 26.31 | 25.60 | 26.50 | 26.44 | 0.49 | 0.45 | 218.81 | 219.89 | 0.37 | 9.88 | 172.00 |
| NewFunds GOVI | NFGOVI | 67.38 | 67.08 | 70.75 | 68.37 | 1.47 | 0.54 | 1038.94 | 1054.21 | 0.83 | 56.49 | 547.00 |
| NewFunds ILBI | NFILBI | 69.57 | 69.28 | 70.15 | 70.08 | 0.73 | 0.16 | 62.61 | 63.07 | 0.05 | 3.45 | 92.00 |
| NewFunds Namibia Bond | NFNAMB | 13.93 | 13.93 | 14.05 | 14.02 | 0.65 | -- | 248.82 | 250.43 | 0.19 | 2.68 | 22.00 |

| SATRIX MANAGERS | CODE | START | LOW | HIGH | END | 1M % | DISTRIBUTION | MCAP OPEN | MCAP CLOSE | VOL | VALUE | TRADES |
|-----------------|--------|-------|------|------|------|------|--------------|-----------|------------|------|-------|--------|
| Satrix ILBI | STXILB | 5.79 | 5.74 | 5.83 | 5.80 | 0.17 | 0.12 | 57.99 | 58.09 | 0.20 | 1.15 | 68.00 |

The information, data and compilations, or any part thereof, which make up the JSE ETF Factsheet ("Data") is being provided to you strictly for informational purposes. JSE Limited ("JSE") reserves the right to withdraw, modify, or replace the Data (or any part thereof) at any time.

To the extent allowed by law, JSE does not (expressly, tacitly or impliedly) guarantee or warrant the availability, sequence, accuracy, completeness, reliability or any other aspect of any of the Data or that the Data contained therein is up to date. To the extent allowed by law, neither the JSE nor any of its directors, officers, employees, contractors, agents or representatives are liable to any way to the reader/user or to any other natural or juristic person (Person) for any loss or damage as a result of any errors contained in the specification, for any loss arising from use of, or reliance on the Data in this JSE ETF Factsheet or any actions taken or not taken by or behalf of any Person in reliance on any Data in this JSE ETF Factsheet. You may not copy, reproduce, redistribute, alter or transmit any Data without the prior written consent of the JSE.

The Johannesburg Stock Exchange prides itself on a 130 year history as an effective, reputable trading platform. We are currently ranked the 19th largest stock exchange in the world based on market capitalization, and the largest exchange on the African continent. The JSE offers secure and efficient primary and secondary capital markets across a diverse range of asset classes which include equities, commodities, currencies, interest rates and bonds. We are the exchange of choice for local and international investors looking for investment opportunities across leading capital markets in South Africa and the broader African continent.

The JSE's achievements escalate through to this year's 20th anniversary of the first ETF listing on the local Exchange Traded Fund (ETF) market. Today, the ETF market capitalization is close to R90bn with over 70 listed ETFs on the JSE Main Board.

Our Primary Markets Team is a key access point for existing and/or potential issuers to gain exposure to local and international investor capital. The team focuses on listing companies and instruments on the Equity (Main Board and AltX) or Debt Market and aids in product development.

Contact the team: listingontheJSE@jse.co.za

Our Information Services Team works to deliver world class market data to our clients. This data can often be customized on request providing our clients with the exact Intel required to make business and portfolios decisions.

We offer live, delayed, end of day, reference and historical market data for:

- Equities
- Indices
- Equity Derivatives
- Commodity Derivatives
- Commodity Derivatives
- Currency Derivatives
- Interest Rate Derivatives
- Bonds
- Market Announcements (SENS)

We have nearly 170 indices across a wide variety of methodologies and investment criteria.

Our partnership with FTSE Russell includes:

- FTSE/JSE All Share
- FTSE/JSE Top 40
- FTSE/JSE ESG
- FTSE/JSE Factor Indices
- FTSE/JSE Shariah
- FTSE/JSE RAFI and many more

We develop customised indices to suit your needs.

- Our other service offerings include:
- Bond ETP data
- Tick data
- Corporate Actions
- Business Intelligence Reports
- Valuations

Contact the team: mdclients@jse.co.za