

MARCH'S HIGHLIGHTS

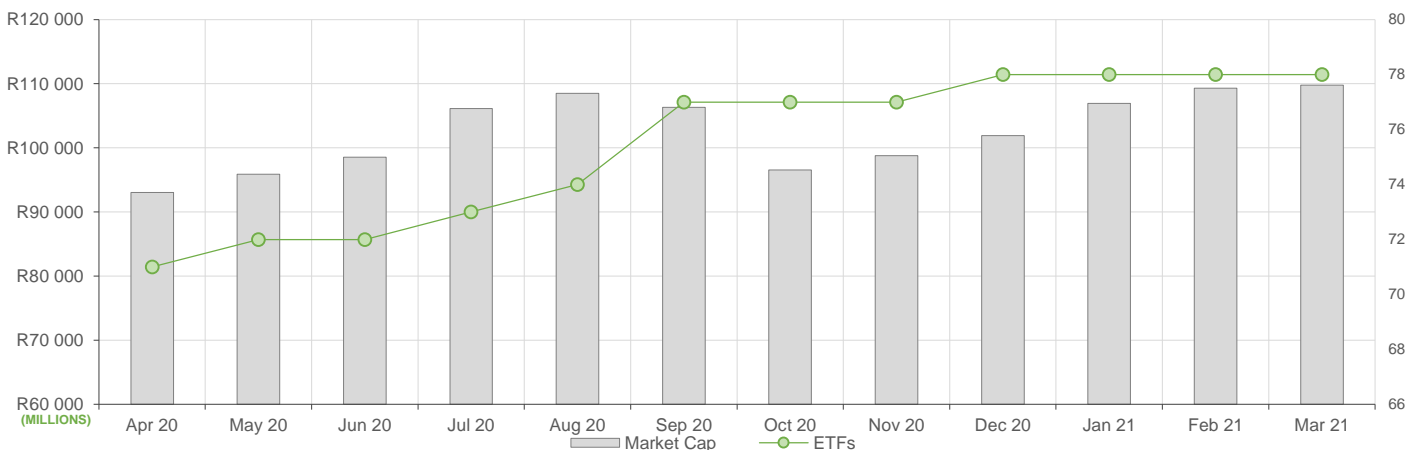
March showed slightly decreased ETF activity compared to February, here is what we have seen:

- ETF Market Capitalization remained largely flat month-on-month at roughly R109bn. ETF unit creations were also fairly on even keel, reflecting only a slight increase, mostly in SA equity ETFs.
- Month-on-month ETF value traded was lower compared to February's activity, reflecting roughly R7bn in total value traded during March.
- Month-on-Month ETF returns showed largely flat performances across local equity ETFs.

NEW LISTINGS AND DELISTINGS

ETF	CODE	ISSUER	EVENT	DATE
	--	--	--	--

MARKET CAPITALISATION ANALYSIS | Total Industry



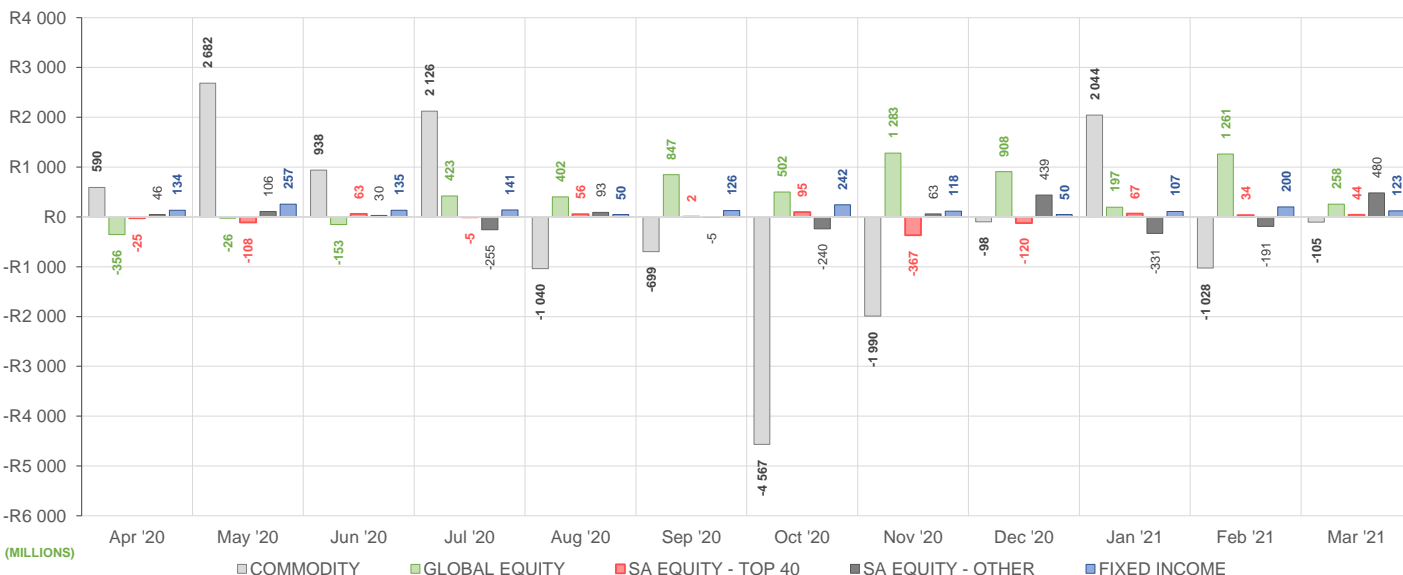
NET DAILY EXCHANGE CREATIONS AND REDEMPTIONS | Top & Bottom Five ETFs

TOP 5 INSTRUMENTS	CODE	TOTAL DAILY CREATIONS	TOTAL DAILY REDEMPTIONS	NET MONTHLY CREATIONS
NewGold Palladium ETF	NGPLD	R429 051 000	---	R429 051 000
1invest SA Property ETF	ETFSA	R179 993 400	---	R179 993 400
Satrix RESI Portfolio	STXRES	R134 635 000	---	R134 635 000
Sygnia Itrix 4Ind Rev Gb	SYG4IR	R101 526 000	---	R101 526 000
Satrix FINI Portfolio	STXFIN	R111 725 000	-R10 244 000	R101 481 000

BOTTOM 5 INSTRUMENTS	CODE	TOTAL DAILY CREATIONS	TOTAL DAILY REDEMPTIONS	NET MONTHLY CREATIONS
Satrix SA Bond Portfolio	STXGOV	R15 525 000	-R62 240 000	-R46 715 000
1investPalladium ETF	ETFPD	---	-R83 095 400	-R83 095 400
Satrix MSCI World Feeder	STXWDM	R126 195 000	-R238 234 500	-R112 039 500
SYGNIA ITRIX FTSE100	SYGUK	---	-R219 822 416	-R219 822 416
New Gold Issuer Ltd	GLD	---	-R509 169 000	-R509 169 000

Considers the daily update to total number of issued units listed on the exchange over the calendar month, with Creations representing a day-on-day increase in total number of listed units, and Redemptions representing a decrease. An average day-on-day price is used to estimate the ZAR value of each net daily movement. No secondary market transactions are considered.

NET MONTHLY EXCHANGE CREATIONS AND REDEMPTIONS



MONTHLY ETF PERFORMANCE | Top & Bottom Five ETFs

TOP 5 INSTRUMENTS	CODE	TOTAL RETURN	VOLATILITY	MAX DRAW DOWN
1investPalladium ETF	ETFPD	9,63%	10,70%	-5,16%
NewGold Palladium ETF	NGPLD	9,44%	10,65%	-5,05%
AMI Big50 ex-SA ETF	AMIB50	6,42%	3,58%	-0,70%
CoreShares SProp	CSPROP	3,93%	5,68%	-6,05%
Satrix ILBI Portfolio	STXILB	3,73%	2,96%	-1,94%

BOTTOM 5 INSTRUMENTS	CODE	TOTAL RETURN	VOLATILITY	MAX DRAW DOWN
1investRhodium ETF	ETFRHO	-4,34%	19,23%	-21,41%
Sygnia Itrix 4Ind Rev Gb	SYG4IR	-4,71%	12,03%	-10,60%
Satrix MSCI EMG Markets	STXEMG	-4,74%	4,56%	-6,06%
Satrix MSCI China ETF	STXCHN	-9,55%	4,72%	-10,50%
AMI RealEstate ex-SA ETF	AMIRE	-12,72%	23,74%	-21,66%

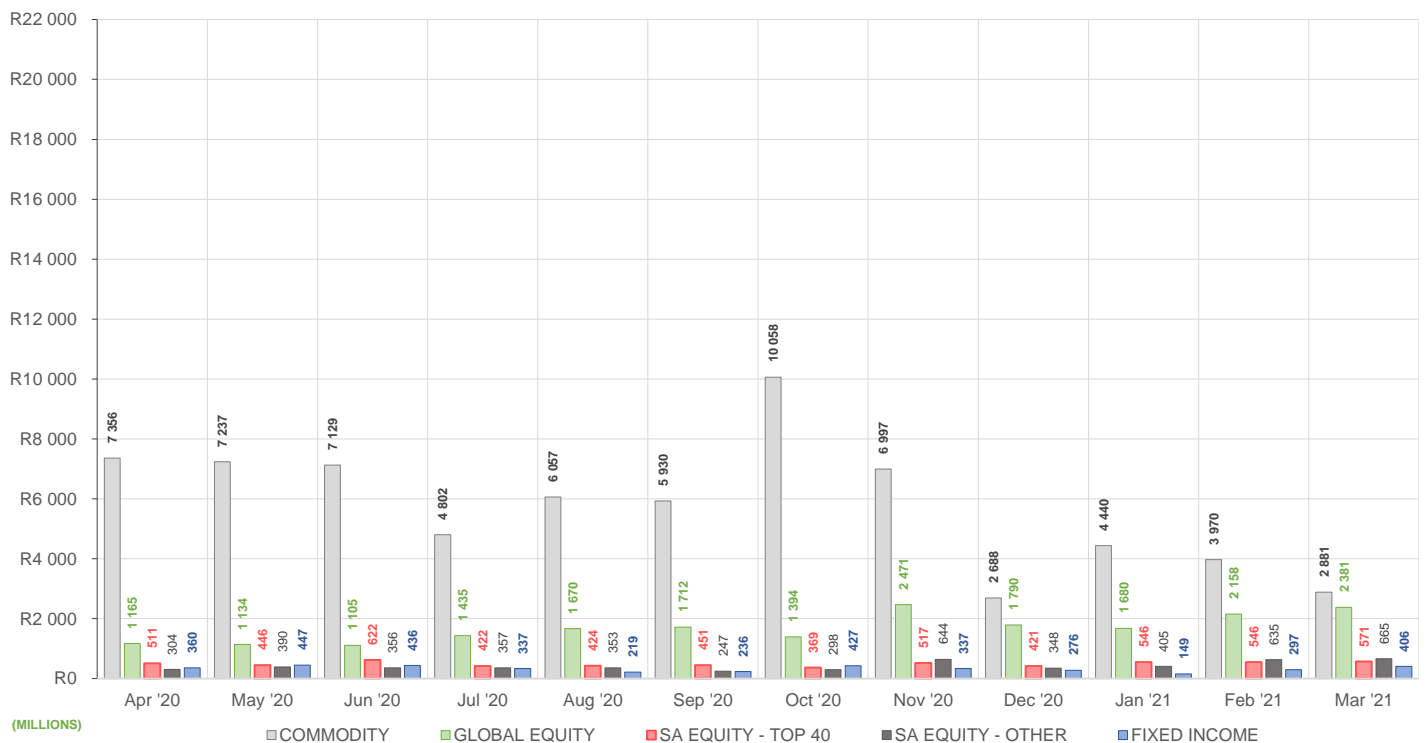
ROLLING 12-MONTH ETF PERFORMANCE | Top & Bottom Five ETFs

TOP 5 INSTRUMENTS	CODE	TOTAL RETURN	VOLATILITY	MAX DRAW DOWN
1investRhodium ETF	ETFRHO	124,21%	60,65%	-37,87%
Sygnia Itrix 4Ind Rev Gb	SYG4IR	92,87%	31,54%	-14,74%
Satrix RESI Portfolio	STXRES	90,93%	31,86%	-21,54%
NEWFUNDS SHARIA TOP40	NFSH40	71,05%	29,40%	-19,94%
Satrix DIVI Plus Portfolio	STXDIV	71,00%	23,65%	-8,60%

BOTTOM 5 INSTRUMENTS	CODE	TOTAL RETURN	VOLATILITY	MAX DRAW DOWN
Satrix Global Bond ETF	STXGBD	-17,04%	14,82%	-17,34%
1invest G7 Govt Bond ETF	ETFGGB	-17,33%	18,69%	-22,37%
Dollar Custodial Cert	DCCUSD	-19,45%	80,56%	-49,29%
AMI RealEstate ex-SA ETF	AMIRE	-29,88%	51,68%	-38,78%
AMI Big50 ex-SA ETF	AMIB50	-36,34%	48,40%	-46,10%

Total Return is the monthly/annual performance incorporating price performance and immediate reinvestment of dividends. Volatility is the based on daily price standard deviation and presented as a monthly/annual volatility. Maximum draw down measures the worst case return outcome for an investor over the course of the period – based on purchase and subsequent sale timing that results in the largest loss of capital.

MONTHLY VALUE TRADED FOR ALL ETFs



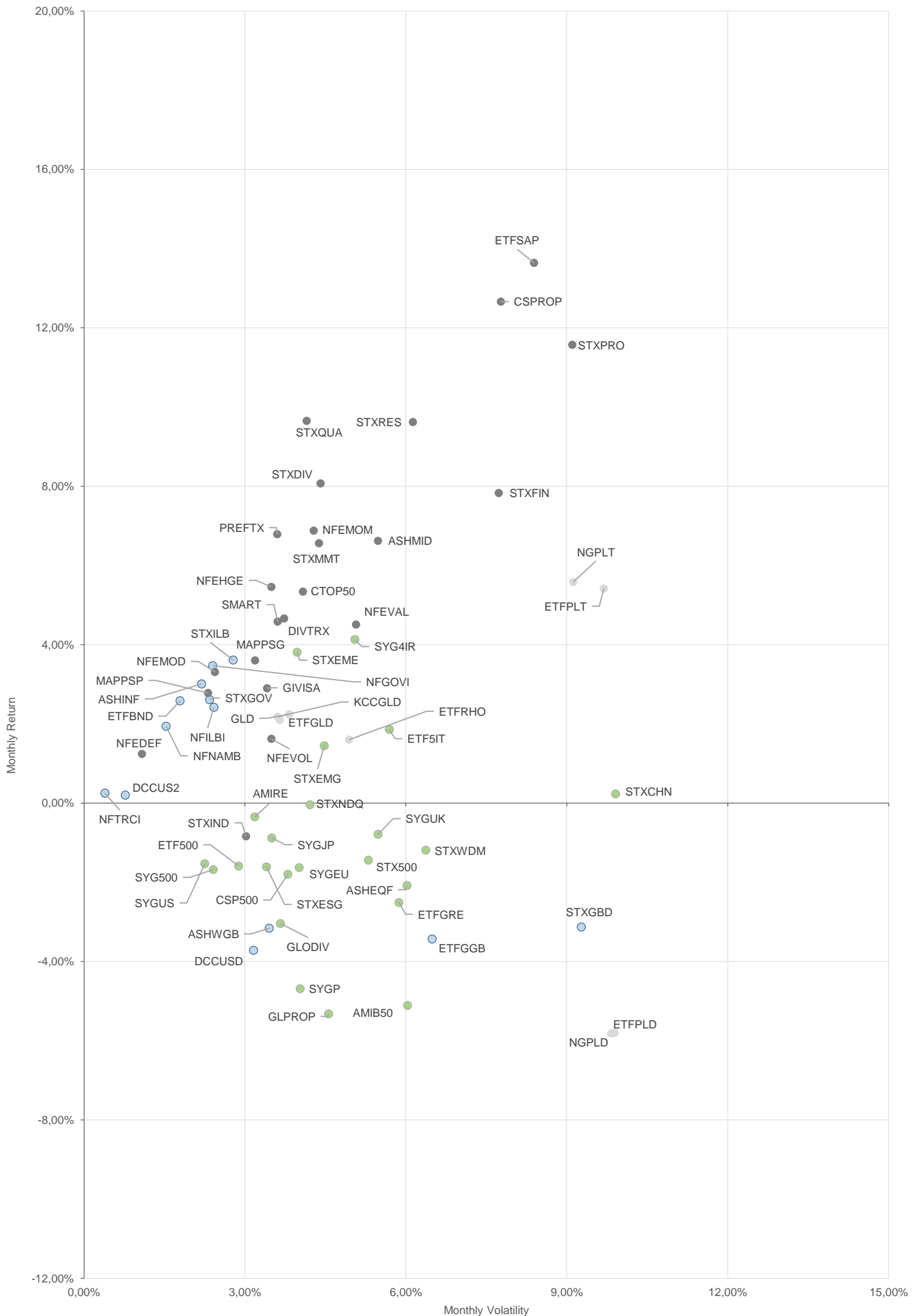
MONTHLY ETF TRADE STATISTICS | Top & Bottom Five Funds

TOP 5 INSTRUMENTS	CODE	VOLUME	VALUE	TRADES	LIQUIDITY
Satrix MSCI World Feeder	STXWDM	11 842 607	R671 904 300,90	2 215	17,00%
1invest SA Property ETF	ETFSAP	6 919 974	R206 711 229,70	823	38,16%
Satrix ILBI Portfolio	STXILB	15 789 551	R99 606 420,72	280	42,66%
Satrix FINI Portfolio	STXFIN	7 638 425	R95 377 815,85	636	12,14%
KR Custodial Certificate	KCCGLD	1 369	R35 970 774,50	29	4,34%

BOTTOM 5 INSTRUMENTS	CODE	VOLUME	VALUE	TRADES	LIQUIDITY
Satrix DIVI Plus Portfolio	STXDIV	11 998 871	R32 063 848,58	858	1,94%
Dollar Custodial Cert	DCCUSD	5 014	R8 007 975,75	21	5,90%
2YR Dollar Custodial Cert	DCCUS2	1 298	R2 005 491,00	14	1,71%
NewFunds S&P GIVI SA T50	GIVISA	9 733	R384 712,48	46	0,47%
AMI RealEstate ex-SA ETF	AMIRE	2 193	R50 472,10	28	2,64%

Volume, Value and Trades are the aggregate counts of all trade activity in the ETF for the month on the JSE equity market. This includes central order book and reported trades, but excludes creations and redemptions. Liquidity is the total volume traded expressed as a percentage of the number of listed instruments for the ETF as at the end of the month.

TOTAL RETURN VERSUS VOLATILITY



● SA EQUITY - TOP 40 ● FIXED INCOME ● SA EQUITY - OTHER ● COMMODITY ● GLOBAL EQUITY

MONTHLY DETAILED ETF INFORMATION

SA EQUITY | TOP 40

Prices in Rands

In Rands

Values in Mn's

in 000's | in Mn's

STANLIB COLLECTIVE INVESTMEN' CODE	START	LOW	HIGH	END	1M %	DISTRIBUTION	MCAP OPEN	MCAP CLOSE	VOL	VALUE	TRADES	
1invest SWIX 40 ETF	ETFSWX	12,57	12,31	13,00	12,55	-0,16	--	1917,16	1916,62	0,44	5,54	104,00
1invest TOP 40 ETF	ETFT40	62,20	59,52	64,21	61,88	-0,51	--	813,34	809,16	0,10	5,96	155,00

ASHBURTON MANAGEMENT COMP CODE	START	LOW	HIGH	END	1M %	DISTRIBUTION	MCAP OPEN	MCAP CLOSE	VOL	VALUE	TRADES	
Ashburton Top 40 ETF	ASHT40	62,27	59,60	64,26	61,55	-1,16	--	1820,67	1824,24	1,00	61,72	897,00

Satrix Managers (RF) (Pty) Ltd	CODE	START	LOW	HIGH	END	1M %	DISTRIBUTION	MCAP OPEN	MCAP CLOSE	VOL	VALUE	TRADES
Satrix 40 Portfolio	STX40	62,18	59,70	64,38	61,62	-0,90	--	10134,84	10012,76	6,51	407,14	2583,00
Satrix SWIX Top 40 Portfolio	STXSWX	12,59	12,20	13,00	12,58	-0,08	--	376,67	376,37	0,47	5,95	196,00

SYGNIA ITRIX (RF) PROPRIETARY L CODE	START	LOW	HIGH	END	1M %	DISTRIBUTION	MCAP OPEN	MCAP CLOSE	VOL	VALUE	TRADES	
Sygnia Itrix SWIX40 ETF	SYGSW4	12,52	12,16	12,92	12,54	0,16	--	168,29	168,56	0,30	3,80	74,00
Sygnia Itrix Top 40 ETF	SYGT40	62,39	59,95	64,17	61,71	-1,09	--	354,05	350,19	0,48	30,09	165,00

SA EQUITY | OTHER

Prices in Rands

In Rands

Values in Mn's

in 000's | in Mn's

STANLIB COLLECTIVE INVESTMEN' CODE	START	LOW	HIGH	END	1M %	DISTRIBUTION	MCAP OPEN	MCAP CLOSE	VOL	VALUE	TRADES	
1invest SA Property ETF	ETFSAP	29,15	27,75	31,03	29,57	1,44	--	351,93	536,19	6,92	206,71	823,00

ASHBURTON MANAGEMENT COMP CODE	START	LOW	HIGH	END	1M %	DISTRIBUTION	MCAP OPEN	MCAP CLOSE	VOL	VALUE	TRADES	
Ashburton Mid Cap ETF	ASHMID	6,88	6,65	7,35	6,97	1,31	--	485,73	492,08	1,38	9,64	423,00

CORESHARES INDEX TRACKER MA CODE	START	LOW	HIGH	END	1M %	DISTRIBUTION	MCAP OPEN	MCAP CLOSE	VOL	VALUE	TRADES	
CoreShares DivTrax	DIVTRX	22,01	21,54	22,93	22,38	1,68	--	140,98	143,35	0,18	3,99	159,00
CORESHARESTOP50	CTOP50	26,80	25,90	27,74	26,66	-0,52	--	1425,08	1417,64	0,30	8,20	190,00
CoreShares SciBeta M-FI	SMART	42,97	42,23	44,31	42,96	-0,02	--	107,65	107,62	0,07	2,95	93,00
CoreShares PrefTrax	PREFTX	7,47	7,20	7,61	7,50	0,40	--	293,79	298,80	1,16	8,63	237,00
CoreShares SAProp	CSPROP	9,16	9,05	9,88	9,52	3,93	--	209,04	230,78	2,81	27,25	482,00

NEWFUNDS COLLECTIVE INVESTM CODE	START	LOW	HIGH	END	1M %	DISTRIBUTION	MCAP OPEN	MCAP CLOSE	VOL	VALUE	TRADES	
NEWFUNDS EQUITY MOM ETF	NFEMOM	38,81	37,90	39,94	38,89	0,21	--	329,51	330,19	0,34	13,29	135,00
Newfunds MAPPs Growth	MAPPSP	25,62	25,06	26,22	25,50	-0,47	--	46,29	46,07	0,02	0,45	65,00
Newfunds MAPPs Protect	MAPPSP	43,01	42,00	43,51	42,79	-0,51	--	47,69	47,44	0,01	0,43	48,00
NewFunds S&P GIVI SA T50	GIVISA	39,85	38,25	40,72	39,53	-0,80	--	81,98	81,32	0,01	0,38	46,00
NEWFUNDS SHARIA TOP40	NFSH40	4,07	3,86	4,22	4,02	-1,23	--	63,39	62,61	0,41	1,67	114,00
NF Equity Value ETF	NFEVAL	9,13	9,00	9,60	9,42	3,18	--	159,94	171,62	2,69	24,69	81,00
NF Low Volatility ETF	NFEVOL	9,20	9,19	9,42	9,21	0,11	--	111,80	111,92	0,03	0,28	42,00
NF VM Defensive EquityETF	NFEDEF	10,06	9,91	10,17	10,01	-0,50	--	52,15	51,89	0,01	0,10	14,00
NF VM High Growth EQETF	NFEHGE	9,21	9,08	9,41	9,19	-0,22	--	67,92	67,78	0,03	0,25	39,00
NF VM Moderate Equity ETF	NFEMOD	9,29	9,27	9,61	9,41	1,29	--	51,69	52,36	0,10	0,94	28,00

Satrix Managers (RF) (Pty) Ltd	CODE	START	LOW	HIGH	END	1M %	DISTRIBUTION	MCAP OPEN	MCAP CLOSE	VOL	VALUE	TRADES
Satrix DIVI Plus Portfolio	STXDIV	2,64	2,54	2,76	2,67	1,14	--	1635,19	1648,43	12,00	32,06	858,00
Satrix FINI Portfolio	STXFIN	12,51	11,76	13,15	12,38	-1,04	--	682,26	779,16	7,64	95,38	636,00
Satrix INDI Portfolio	STXIND	84,03	81,70	86,22	83,81	-0,26	--	2040,96	2031,43	0,56	46,57	522,00
Satrix Momentum Portfolio	STXMMT	11,15	10,82	11,63	11,17	0,18	--	31,31	31,36	0,19	2,20	96,00
Satrix Property Portfolio	STXPRO	8,65	8,23	9,10	8,67	0,23	--	152,86	206,10	3,72	33,04	500,00
Satrix Quality SA Port	STXQUA	8,77	8,55	9,10	8,78	0,11	--	84,51	80,22	0,31	2,72	126,00
Satrix RAFI 40 Portfolio	STXRAF	16,17	15,65	17,20	16,19	0,12	--	942,34	940,27	0,81	13,28	250,00
Satrix RESI Portfolio	STXRES	69,88	66,16	74,52	69,96	0,11	--	697,96	831,68	1,46	104,13	937,00

GLOBAL EQUITY

Prices in Rands

In Rands

Values in Mn's

in 000's | in Mn's

STANLIB COLLECTIVE INVESTMEN' CODE	START	LOW	HIGH	END	1M %	DISTRIBUTION	MCAP OPEN	MCAP CLOSE	VOL	VALUE	TRADES	
1invest Global REIT ETF	ETFGRE	18,86	18,05	22,99	18,84	-0,11	--	112,11	112,93	0,16	3,11	216,00
1invest MSCI World ETF	ETFWLD	56,38	54,97	58,33	56,69	0,55	--	121,72	141,10	0,28	15,94	268,00
1INVEST S&P500 INDEX ETF	ETF500	292,93	270,00	310,00	296,47	1,21	--	58,56	60,75	0,01	3,41	240,00
1invest S&P500 IT ETF	ETF5IT	12,43	11,91	12,77	12,26	-1,37	--	366,30	358,96	2,03	24,89	540,00

ASHBURTON MANAGEMENT COMP CODE	START	LOW	HIGH	END	1M %	DISTRIBUTION	MCAP OPEN	MCAP CLOSE	VOL	VALUE	TRADES	
Ashburton Global 1200 FOF ETF	ASHEQF	60,63	59,98	63,00	60,82	0,31	--	1125,84	1171,94	1,06	64,62	861,00

CLOUD ATLAS (RF) PROPRIETARY CODE	START	LOW	HIGH	END	1M %	DISTRIBUTION	MCAP OPEN	MCAP CLOSE	VOL	VALUE	TRADES	
AMI Big50 ex-SA ETF	AMIB50	6,70	6,50	7,25	7,13	6,42	--	5,17	5,50	0,03	0,21	66,00
AMI RealEstate ex-SA ETF	AMIRE	23,20	20,00	26,05	20,25	-12,72	--	1,92	1,68	0,00	0,05	28,00

CORESHARES INDEX TRACKER MA CODE	START	LOW	HIGH	END	1M %	DISTRIBUTION	MCAP OPEN	MCAP CLOSE	VOL	VALUE	TRADES	
CoreShares Global Prop	GLPROP	37,77	37,05	40,69	38,45	1,80	--	444,90	452,91	0,47	18,26	357,00
CoreShares GlobalDivTrax	GLODIV	14,46	14,20	15,37	14,92	3,18	--	710,30	732,90	1,24	18,31	436,00
CoreShares S&P 500	CSP500	57,96	57,15	60,01	59,06	1,90	--	1250,22	1273,94	1,04	61,04	803,00

Satrix Managers (RF) (Pty) Ltd	CODE	START	LOW	HIGH	END	1M %	DISTRIBUTION	MCAP OPEN	MCAP CLOSE	VOL	VALUE	TRADES
Satrix MSCI EMG Markets	STXEMG	57,21	52,01	58,49	54,50	-4,74	--	1623,20	1595,36	2,36	131,60	1772,00
Satrix MSCI World Feeder	STXWDM	56,25	55,66	59,00	56,71	0,82	--	4031,45	3950,99	11,84	671,90	2215,00
Satrix Nasdaq 100 Prtf	STXNDQ	111,06	106,11	113,89	108,93	-1,92	--	2190,20	2180,88	0,82	89,83	1547,00
Satrix S&P 500 Feeder	STX500	58,95	57,15	60,92	59,69	1,26	--	1537,07	1568,30	1,14	67,86	1122,00
Satrix MSCI China ETF	STXCHN	60,60	53,75	61,68	54,81	-9,55	--	1421,47	1378,83	2,58	147,45	2407,00
Satrix MSCI EM ESG ETF	STXEME	51,21	48,33	53,50	49,25	-3,83	--	112,89	123,34	0,31	15,76	256,00
Satrix MSCI World ESG ETF	STXESG	50,85	49,75	53,50	50,89	0,08	--	91,95	86,93	0,59	29,96	256,00

SYGNIA ITRIX (RF) PROPRIETARY L CODE	START	LOW	HIGH	END	DISTRIBUTION	MCAP OPEN	MCAP CLOSE	VOL	VALUE	TRADES		
Sygnia Itrix 4Ind Rev Gb	SYG4IR	55,78	50,88	57,99	53,15	1,26	--	2282,25	2275,63	4,32	234,18	3417,00
SYGNIA ITRIX EUROSTOXX50	SYGEU	67,05	67,19	70,06	68,60	2,31	--	2832,39	2932,17	1,29	89,12	791,00
SYGNIA ITRIX FTSE100	SYGUK	137,81	136,31	145,41	138,27	0,33	--	1095,79	883,24	0,18	25,32	444,00
Sygnia Itrix Gbl Pro ETF	SYGPG	39,12	38,46	40,97	39,72	1,53	--	533,33	601,09	1,49	59,59	347,00
SYGNIA ITRIX MSCI JAPAN	SYGJP	16,48	16,04	16,72	16,13	-2,12	--	760,68	776,79	3,79	62,65	438,00
SYGNIA ITRIX MSCI US	SYGUS	55,58	54,50	56,94	56,17	1,06	--	5818,89	5880,66	1,73	96,83	1087,00
SYGNIA ITRIX MSCI WORLD	SYGWD	41,75	41,19	43,00	41,56	-0,46	--	10724,51	10675,71	6,10	256,09	1786,00
Sygnia Itrix S&P 500 ETF	SYG500	58,73	57,79	60,43	59,50	1,31	--	2412,12	2503,24	2,07	122,98	757,00

MONTHLY DETAILED ETF INFORMATION

COMMODITIES

		Prices in Rands				In Rands		Values in Mn's		in 000's in Mn's		
INVEST ETF ISSUER (RF) LIMITED	CODE	START	LOW	HIGH	END	1M %	DISTRIBUTION	MCAP OPEN	MCAP CLOSE	VOL	VALUE	TRADES
1InvestGold ETF	ETFGLD	254,70	242,59	259,03	245,83	-3,48	--	2740,57	#####	0,18	44,52	0,00
1InvestPalladium ETF	ETFPLD	342,80	330,00	390,82	375,80	9,63	--	916,66	#####	0,30	108,70	0,00
1InvestPlatinum ETF	ETFPLT	176,02	168,00	179,66	172,09	-2,23	--	4556,28	#####	1,04	177,67	0,00
1InvestRhodium ETF	ETFRHO	4008,02	3280,00	4358,95	3833,94	-4,34	--	1249,32	#####	0,03	123,15	0,00

FIRSTRAND BANK LIMITED	CODE	START	LOW	HIGH	END	1M %	DISTRIBUTION	MCAP OPEN	MCAP CLOSE	VOL	VALUE	TRADES
KR Custodial Certificate	KCCGLD	26715,00	25625,00	27017,00	25804,00	-3,41	--	841,92	#####	0,00	35,97	0,00

NEWGOLD ISSUER (RF) LIMITED	CODE	START	LOW	HIGH	END	1M %	DISTRIBUTION	MCAP OPEN	MCAP CLOSE	VOL	VALUE	TRADES
New Gold Issuer Ltd	GLD	243,65	232,75	248,00	235,24	-3,45	--	17001,39	#####	5,53	1,338,54	0,00
New Gold Platinum ETF	NGPLT	174,57	165,90	178,40	170,66	-2,24	--	10299,63	#####	1,12	190,66	0,00
NewGold Palladium ETF	NGPLD	343,12	337,50	387,70	375,50	9,44	--	626,09	#####	1,98	725,30	0,00

SA & GLOBAL FIXED INCOME

		Prices in Rands				In Rands		Values in Mn's		in 000's in Mn's		
STANLIB COLLECTIVE INVESTMEN' CODE	CODE	START	LOW	HIGH	END	1M %	DISTRIBUTION	MCAP OPEN	MCAP CLOSE	VOL	VALUE	TRADES
1Invest G7 Govt Bond ETF	ETFGGB	87,80	82,88	91,00	84,81	-3,41	--	36,21	34,98	0,04	3,28	101,00
1Invest SA Bond ETF	ETFBND	79,93	73,55	80,22	77,65	-2,85	--	47,96	46,59	0,07	5,09	295,00

ASHBURTON MANAGEMENT COMP CODE	CODE	START	LOW	HIGH	END	1M %	DISTRIBUTION	MCAP OPEN	MCAP CLOSE	VOL	VALUE	TRADES
Ashburton World GovB ETF	ASHWGB	7,79	7,46	8,10	7,54	-3,21	--	133,48	129,20	0,38	2,97	153,00
Ashburton Inflation ETF	ASHINF	20,67	20,11	21,14	20,94	1,31	--	337,64	342,05	0,27	5,60	114,00

FIRSTRAND BANK LIMITED	CODE	START	LOW	HIGH	END	1M %	DISTRIBUTION	MCAP OPEN	MCAP CLOSE	VOL	VALUE	TRADES
2YR Dollar Custodial Cert	DCCUS2	1519,50	1490,99	1558,01	1495,50	-1,58	--	115,48	113,66	0,00	2,01	14,00
Dollar Custodial Cert	DCCUSD	1589,50	1550,00	1627,00	1549,30	-2,53	--	135,11	131,69	0,01	8,01	21,00

NEWFUNDS COLLECTIVE INVESTM CODE	CODE	START	LOW	HIGH	END	1M %	DISTRIBUTION	MCAP OPEN	MCAP CLOSE	VOL	VALUE	TRADES
NEWFUNDS TRACI 3-M ETF	NFTRCI	27,80	27,65	27,97	27,87	0,25	--	231,20	231,79	0,89	24,72	194,00
NEWFUNDS GOVI ETF	NFGOVI	73,96	70,85	74,79	71,70	-3,06	0,48	2434,70	2432,00	3,24	234,24	2010,00
NEWFUNDS ILBI ETF	NFILBI	72,93	71,66	73,99	73,65	0,99	0,16	102,10	103,11	0,06	4,52	249,00
NFNAM 10 Bonds	NFNAMB	15,87	15,45	15,97	15,68	-1,20	--	331,08	341,23	0,02	0,24	31,00

Satrix Managers (RF) (Pty) Ltd	CODE	START	LOW	HIGH	END	1M %	DISTRIBUTION	MCAP OPEN	MCAP CLOSE	VOL	VALUE	TRADES
Satrix ILBI Portfolio	STXILB	6,16	6,00	6,44	6,39	3,73	--	147,94	236,53	15,79	99,61	280,00
Satrix SA Bond Portfolio	STXGOV	7,96	7,54	8,05	7,75	-2,64	--	469,49	410,60	17,18	132,21	261,00
Satrix Global Bond ETF	STXGBD	40,30	38,81	41,50	38,84	-3,62	--	40,35	38,89	0,33	13,06	93,00

The information, data and compilations, or any part thereof, which make up the JSE ETF Factsheet ("Data") is being provided to you strictly for informational purposes. JSE Limited ("JSE") reserves the right to withdraw, modify, or replace the Data (or any part thereof) at any time.

To the extent allowed by law, JSE does not (expressly, tacitly or impliedly) guarantee or warrant the availability, sequence, accuracy, completeness, reliability or any other aspect of any of the Data or that the Data contained therein is up to date. To the extent allowed by law, neither the JSE nor any of its directors, officers, employees, contractors, agents or representatives are liable to any way to the reader/user or to any other natural or juristic person (Person) for any loss or damage as a result of any errors contained in the specification, for any loss arising from use of, or reliance on the Data in this JSE ETF Factsheet or any actions taken or not taken by or behalf of any Person in reliance on any Data in this JSE ETF Factsheet. You may not copy, reproduce, redistribute, alter or transmit any Data without the prior written consent of the JSE.

The Johannesburg Stock Exchange prides itself on a 130 year history as an effective, reputable trading platform. We are currently ranked the 19th largest stock exchange in the world based on market capitalization, and the largest exchange on the African continent. The JSE offers secure and efficient primary and secondary capital markets across a diverse range of asset classes which include equities, commodities, currencies, interest rates and bonds. We are the exchange of choice for local and international investors looking for investment opportunities across leading capital markets in South Africa and the broader African continent.

The JSE's achievements escalate through to this year's 20th anniversary of the first ETF listing on the local Exchange Traded Fund (ETF) market. Today, the ETF market capitalization is close to R90bn with over 70 listed ETFs on the JSE Main Board.

Our Primary Markets Team is a key access point for existing and/or potential issuers to gain exposure to local and international investor capital. The team focuses on listing companies and instruments on the Equity (Main Board and AltX) or Debt Market and aids in product development.

Contact the team: listingontheJSE@jse.co.za

Our Information Services Team works to deliver world class market data to our clients. This data can often be customized on request providing our clients with the exact Intel required to make business and portfolio decisions.

We offer live, delayed, end of day, reference and historical market data for:

- Equities
- Indices
- Equity Derivatives
- Commodity Derivatives
- Commodity Derivatives
- Currency Derivatives
- Interest Rate Derivatives
- Bonds
- Market Announcements (SENS)

We have nearly 170 indices across a wide variety of methodologies and investment criteria.

Our partnership with FTSE Russell includes:

- FTSE/JSE All Share
- FTSE/JSE Top 40
- FTSE/JSE ESG
- FTSE/JSE Factor Indices
- FTSE/JSE Shariah
- FTSE/JSE RAFI and many more

We develop customised indices to suit your needs.

- Our other service offerings include:
- Bond ETP data
- Tick data
- Corporate Actions
- Business Intelligence Reports
- Valuations

Contact the team: mdclients@jse.co.za