

## JUNE'S HIGHLIGHTS

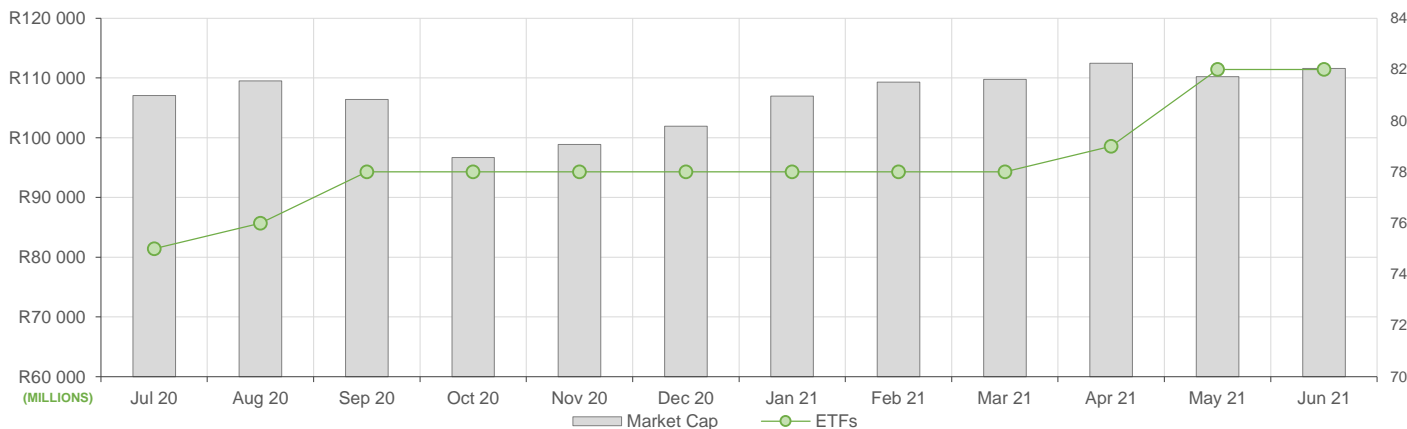
June showed decreased ETF activity compared to May, here is what we have seen:

- ETF Market Capitalization showed a slight increase month-on-month to roughly R111.6bn. ETF unit creations were also slightly higher compared to the previous month, reflecting a marginal increase in SA Top 40 ETF creations and fixed income ETF creations.
- Month-on-month ETF value traded was lower compared to May's activity, reflecting roughly R5bn in total value traded during the month.
- Month-on-Month ETF returns showed promising positive performances across global equity ETFs.

## NEW LISTINGS AND DELISTINGS

ETF	CODE	ISSUER	EVENT	DATE
-----	------	--------	-------	------

## MARKET CAPITALISATION ANALYSIS | Total Industry



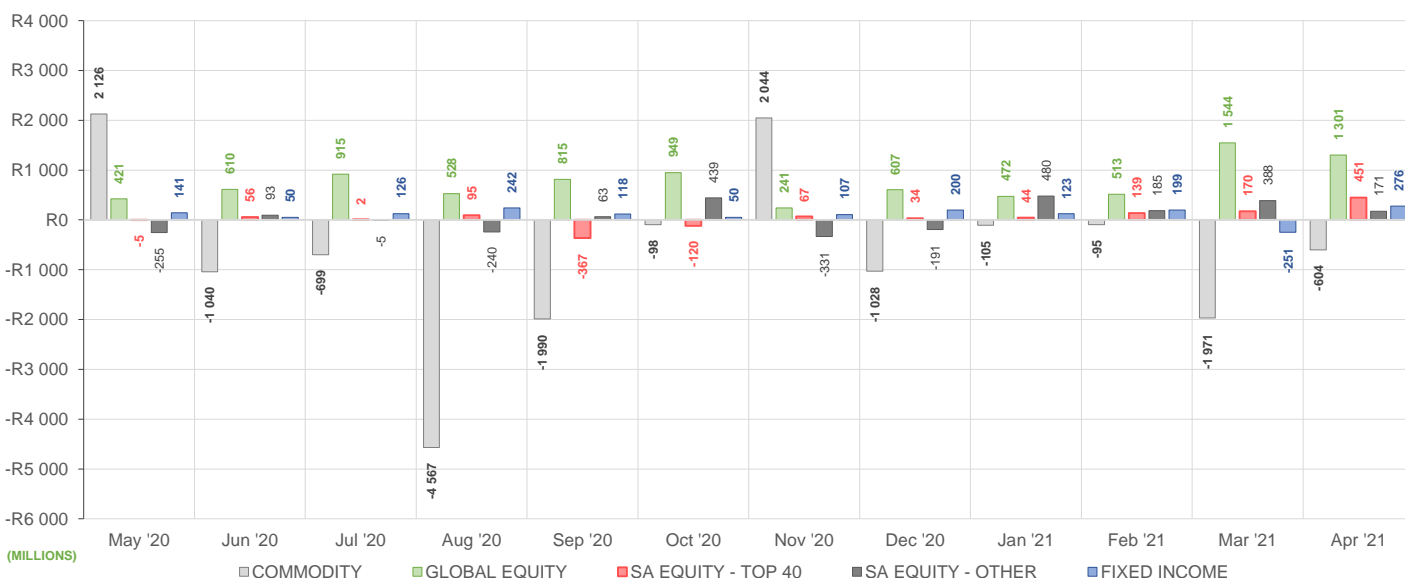
## NET DAILY EXCHANGE CREATIONS AND REDEMPTIONS | Top & Bottom Five ETFs

TOP 5 INSTRUMENTS	CODE	TOTAL DAILY CREATIONS	TOTAL DAILY REDEMPTIONS	NET MONTHLY CREATIONS
Satrix MSCI World Feeder	STXWDM	R907 766 473	---	R907 766 473
Satrix 40 Portfolio	STX40	R457 047 000	---	R457 047 000
Satrix RESI Portfolio	STXRES	R232 429 500	-R32 552 500	R199 877 000
Sygnia Itrix MSCI EM 50	SYGEMF	R153 819 968	---	R153 819 968
Satrix Property Portfolio	STXPRO	R205 246 000	-R86 151 000	R119 095 000

BOTTOM 5 INSTRUMENTS	CODE	TOTAL DAILY CREATIONS	TOTAL DAILY REDEMPTIONS	NET MONTHLY CREATIONS
New Gold Platinum ETF	NGPLT	---	-R75 576 500	-R75 576 500
CORESHARESTOP50	CTOP50	---	-R92 894 401	-R92 894 401
Sygnia Itrix S&P 500 ETF	SYG500	R35 556 000	-R153 737 549	-R118 181 549
Satrix INDI Portfolio	STXIND	R8 563 500	-R175 982 250	-R167 418 750
1investGold ETF	ETFGLD	---	-R509 549 000	-R509 549 000

Considers the daily update to total number of issued units listed on the exchange over the calendar month, with Creations representing a day-on-day increase in total number of listed units, and Redemptions representing a decrease. An average day-on-day price is used to estimate the ZAR value of each net daily movement. No secondary market transactions are considered.

## NET MONTHLY EXCHANGE CREATIONS AND REDEMPTIONS



## MONTHLY ETF PERFORMANCE | Top & Bottom Five ETFs

TOP 5 INSTRUMENTS	CODE	TOTAL RETURN	VOLATILITY	MAX DRAW DOWN
1invest S&P500 IT ETF	ETF5IT	14,63%	4,61%	-1,51%
Satrix Nasdaq 100 Prtf	STXNDQ	9,71%	4,92%	-2,46%
1INVEST S&P500 INDEX ETF	ETF500	6,59%	2,85%	-1,62%
Sygnia Itrix MSCI US	SYGUS	6,30%	3,46%	-1,45%
1invest G7 Govt Bond ETF	ETFGGB	5,75%	3,53%	-1,96%

BOTTOM 5 INSTRUMENTS	CODE	TOTAL RETURN	VOLATILITY	MAX DRAW DOWN
AMI Big50 ex-SA ETF	AMIB50	-7,30%	13,98%	-12,23%
Satrix RESI Portfolio	STXRES	-8,13%	5,81%	-11,04%
New Gold Platinum ETF	NGPLT	-8,20%	6,64%	-8,94%
1investPlatinum ETF	ETFPLT	-8,40%	6,82%	-9,15%
1investRhodium ETF	ETFRHO	-19,20%	23,56%	-25,59%

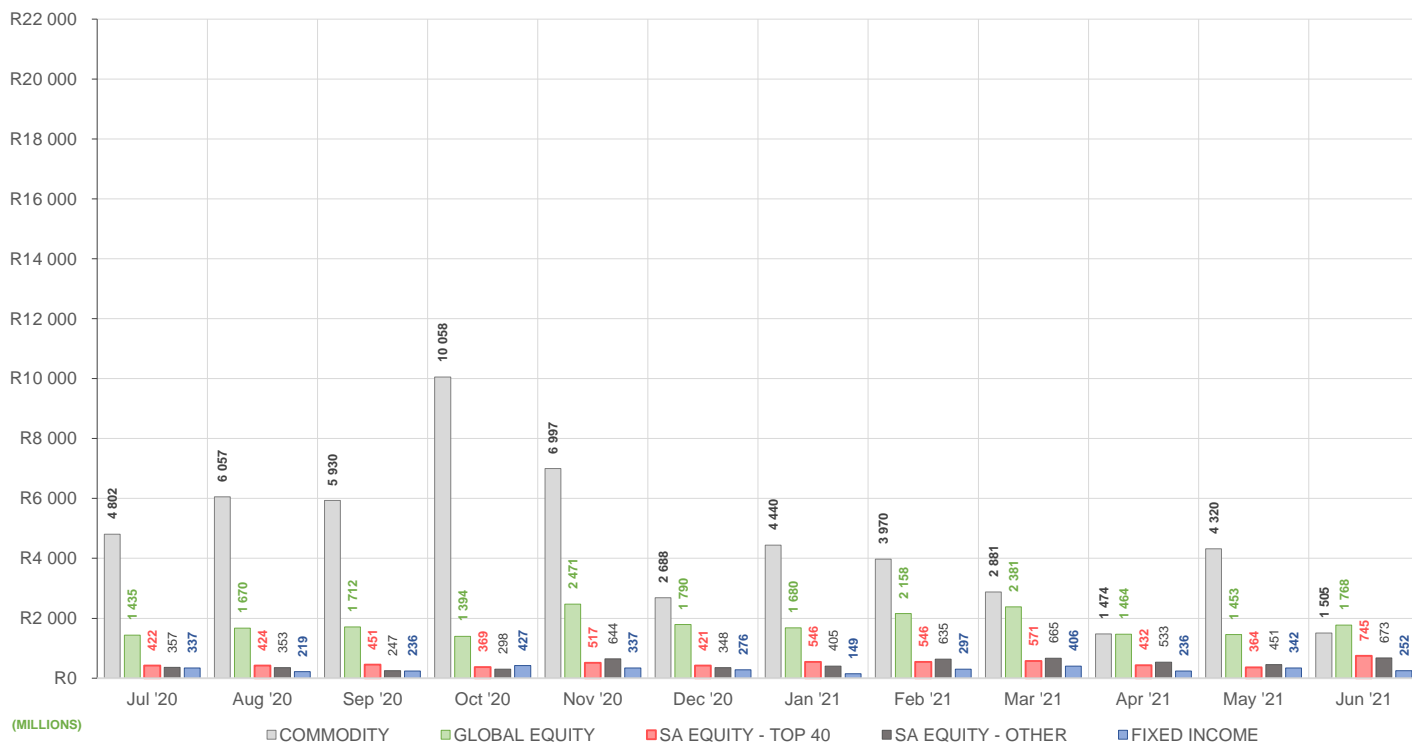
## ROLLING 12-MONTH ETF PERFORMANCE | Top & Bottom Five ETFs

TOP 5 INSTRUMENTS	CODE	TOTAL RETURN	VOLATILITY	MAX DRAW DOWN
1investRhodium ETF	ETFRHO	105,96%	55,47%	-43,64%
Sygnia Itrix 4Ird Rev Gb	SYG4IR	49,54%	29,86%	-23,65%
NF Equity Value ETF	NFEVAL	43,34%	20,62%	-12,98%
Satrix DIVI Plus Portfolio	STXDIV	40,23%	17,84%	-8,14%
Satrix RAFI 40 Portfolio	STXRAF	34,61%	18,53%	-12,50%

BOTTOM 5 INSTRUMENTS	CODE	TOTAL RETURN	VOLATILITY	MAX DRAW DOWN
1investGold ETF	ETFGLD	-18,88%	18,32%	-32,16%
New Gold Issuer Ltd	GLD	-18,89%	17,73%	-30,91%
AMI RealEstate ex-SA ETF	AMIRE	-19,86%	37,22%	-31,33%
Dollar Custodial Cert	DCCUSD	-19,89%	80,58%	-49,29%
AMI Big50 ex-SA ETF	AMIB50	-32,93%	79,88%	-58,94%

Total Return is the monthly/annual performance incorporating price performance and immediate reinvestment of dividends. Volatility is the based on daily price standard deviation and presented as a monthly/annual volatility. Maximum draw down measures the worst case return outcome for an investor over the course of the period – based on purchase and subsequent sale timing that results in the largest loss of capital.

## MONTHLY VALUE TRADED FOR ALL ETFs



## MONTHLY ETF TRADE STATISTICS | Top & Bottom Five Funds

TOP 5 INSTRUMENTS	CODE	VOLUME	VALUE	TRADES	LIQUIDITY
Satrix 40 Portfolio	STX40	10 180 962	R620 142 702,70	2 149	5,87%
Sygnia Itrix MSCI World	SYGWD	11 592 070	R490 760 290,20	1 447	4,48%
Satrix MSCI World Feeder	STXWDM	4 949 187	R281 443 411,30	1 523	5,45%
1invest SA Property ETF	ETFSAP	7 950 223	R251 743 792,60	1 120	29,08%
Satrix DIVI Plus Portfolio	STXDIV	10 088 694	R27 552 661,86	641	1,61%

BOTTOM 5 INSTRUMENTS	CODE	VOLUME	VALUE	TRADES	LIQUIDITY
KR Custodial Certificate	KCCGLD	436	R11 406 963,00	17	1,38%
2YR Dollar Custodial Cert	DCCUS2	5 244	R7 171 031,87	19	6,90%
Newfunds MAPPSP Protect	MAPPSP	6 220	R270 226,53	36	0,56%
NF VM Defensive EquityETF	NFEDEF	6 329	R64 244,16	17	0,12%
AMI RealEstate ex-SA ETF	AMIRE	531	R11 096,60	26	0,64%

Volume, Value and Trades are the aggregate counts of all trade activity in the ETF for the month on the JSE equity market. This includes central order book and reported trades, but excludes creations and redemptions. Liquidity is the total volume traded expressed as a percentage of the number of listed instruments for the ETF as at the end of the month.



# MONTHLY DETAILED ETF INFORMATION

## SA EQUITY | TOP 40

Prices in Rands

In Rands

Values in Mn's

in 000's | in Mn's

STANLIB COLLECTIVE INVESTMEN' CODE	START	LOW	HIGH	END	1M %	DISTRIBUTION	MCAP OPEN	MCAP CLOSE	VOL	VALUE	TRADES	
1invest SWIX 40 ETF	ETFSWX	12,54	11,86	13,00	12,03	-4,07	--	1915,47	1838,17	0,20	2,46	123,00
1invest TOP 40 ETF	ETFT40	62,83	59,39	63,19	60,35	-3,95	--	822,52	790,66	0,01	0,83	94,00

ASHBURTON MANAGEMENT COMP CODE	START	LOW	HIGH	END	1M %	DISTRIBUTION	MCAP OPEN	MCAP CLOSE	VOL	VALUE	TRADES	
Ashburton Top 40 ETF	ASHT40	63,04	59,53	63,42	60,54	-3,97	--	1950,35	1855,65	0,67	41,07	351,00

Satrix Managers (RF) (Pty) Ltd	CODE	START	LOW	HIGH	END	1M %	DISTRIBUTION	MCAP OPEN	MCAP CLOSE	VOL	VALUE	TRADES
Satrix 40 Portfolio	STX40	63,14	59,27	63,50	60,66	-3,93	--	10474,42	10517,96	10,18	620,14	2149,00
Satrix SWIX Top 40 Portfolio	STXSWX	12,57	11,70	12,68	12,06	-4,06	--	383,61	368,05	0,61	7,37	152,00

SYGNIA ITRIX (RF) PROPRIETARY L CODE	START	LOW	HIGH	END	1M %	DISTRIBUTION	MCAP OPEN	MCAP CLOSE	VOL	VALUE	TRADES	
Sygnia Itrix SWIX40 ETF	SYGSW4	12,61	11,94	12,70	12,10	-4,04	--	169,50	162,65	0,13	1,54	47,00
Sygnia Itrix Top 40 ETF	SYGT40	63,75	60,50	64,11	61,44	-3,62	--	374,52	370,16	0,26	15,80	105,00

## SA EQUITY | OTHER

Prices in Rands

In Rands

Values in Mn's

in 000's | in Mn's

STANLIB COLLECTIVE INVESTMEN' CODE	START	LOW	HIGH	END	1M %	DISTRIBUTION	MCAP OPEN	MCAP CLOSE	VOL	VALUE	TRADES	
1invest SA Property ETF	ETFSAP	31,34	30,50	33,35	31,95	1,95	--	757,43	873,61	7,95	251,74	1120,00

ASHBURTON MANAGEMENT COMP CODE	START	LOW	HIGH	END	1M %	DISTRIBUTION	MCAP OPEN	MCAP CLOSE	VOL	VALUE	TRADES	
Ashburton Mid Cap ETF	ASHMID	7,61	7,16	7,77	7,34	-3,55	--	572,27	548,68	2,93	22,07	429,00

CORESHARES INDEX TRACKER MA CODE	START	LOW	HIGH	END	1M %	DISTRIBUTION	MCAP OPEN	MCAP CLOSE	VOL	VALUE	TRADES	
CoreShares DivTrax	DIVTRX	22,50	20,92	22,66	21,50	-4,44	--	144,12	137,72	0,16	3,49	133,00
CORESHARESTOP50	CTOP50	27,91	26,26	28,10	26,74	-4,19	--	1491,09	1335,87	0,28	7,61	158,00
CoreShares SciBeta M-FI	SMART	45,14	42,63	45,60	43,47	-3,70	--	127,80	123,07	0,04	1,62	76,00
CoreShares PrefTrax	PREFTX	7,98	7,52	8,02	7,62	-4,51	--	346,98	327,52	0,75	5,80	204,00
CoreShares SAProp	CSPROP	10,26	10,10	10,70	10,31	0,49	--	257,95	259,21	0,60	6,14	180,00

NEWFUNDS COLLECTIVE INVESTM CODE	START	LOW	HIGH	END	1M %	DISTRIBUTION	MCAP OPEN	MCAP CLOSE	VOL	VALUE	TRADES	
NEWFUNDS EQUITY MOM ETF	NFEMOM	41,14	38,79	41,68	40,58	-1,36	--	349,29	344,53	0,32	13,05	92,00
Newfunds MAPPSP Growth	MAPPSP	25,85	24,70	26,02	25,06	-3,06	--	46,70	45,28	0,01	0,30	50,00
Newfunds MAPPSP Protect	MAPPSP	43,89	42,50	44,24	43,08	-1,85	--	48,66	47,77	0,01	0,27	36,00
NewFunds S&P GIVI SA T50	GIVISA	40,70	38,79	40,86	39,13	-3,86	--	83,73	80,50	0,02	0,93	44,00
NEWFUNDS SHARIA TOP40	NFSH40	4,10	3,66	4,14	3,82	-6,83	--	63,86	59,50	0,23	0,90	71,00
NF Equity Value ETF	NFEVAL	10,48	10,02	10,60	10,21	-2,58	--	190,93	186,01	4,06	40,91	262,00
NF Low Volatility ETF	NFEVOL	9,64	9,23	9,63	9,28	-3,73	--	117,15	112,77	0,02	0,16	36,00
NF VM Defensive EquityETF	NFEDEF	10,29	10,02	10,26	10,13	-1,55	--	53,34	52,51	0,01	0,06	17,00
NF VM High Growth EQETF	NFEHGE	9,56	9,05	9,59	9,23	-3,45	--	70,51	68,07	0,05	0,43	35,00
NF VM Moderate Equity ETF	NFEMOD	9,78	9,41	9,72	9,47	-3,17	--	54,42	52,69	0,02	0,21	15,00

Satrix Managers (RF) (Pty) Ltd	CODE	START	LOW	HIGH	END	1M %	DISTRIBUTION	MCAP OPEN	MCAP CLOSE	VOL	VALUE	TRADES
Satrix DIVI Plus Portfolio	STXDIV	2,79	2,60	2,84	2,72	-2,51	--	1750,42	1706,50	10,09	27,55	641,00
Satrix FINI Portfolio	STXFIN	13,74	12,79	14,05	13,26	-3,49	--	842,77	831,89	3,27	43,59	547,00
Satrix INDI Portfolio	STXIND	86,64	84,98	87,86	85,63	-1,17	--	2156,34	1964,22	0,89	77,08	520,00
Satrix Momentum Portfolio	STXMMT	11,64	10,85	11,67	11,05	-5,07	--	32,68	31,03	0,24	2,71	69,00
Satrix Property Portfolio	STXPRO	9,29	9,04	9,80	9,40	1,18	--	299,80	419,91	4,73	45,07	822,00
Satrix Quality SA Port	STXQUA	8,60	7,96	8,73	8,17	-5,00	--	74,27	70,56	0,38	3,15	88,00
Satrix RAFI 40 Portfolio	STXRAF	17,49	16,43	17,64	16,85	-3,66	0,00	1012,27	975,23	0,90	15,32	214,00
Satrix RESI Portfolio	STXRES	70,63	61,52	71,09	64,89	-8,13	--	987,97	1089,37	1,60	106,69	823,00

## GLOBAL EQUITY

Prices in Rands

In Rands

Values in Mn's

in 000's | in Mn's

STANLIB COLLECTIVE INVESTMEN' CODE	START	LOW	HIGH	END	1M %	DISTRIBUTION	MCAP OPEN	MCAP CLOSE	VOL	VALUE	TRADES	
1invest Global REIT ETF	ETFGRE	19,11	18,46	20,51	20,02	4,76	--	117,04	122,61	0,25	4,84	174,00
1invest MSCI World ETF	ETFWLD	56,32	54,50	62,00	57,11	1,40	--	153,41	158,42	0,09	5,18	125,00
1INVEST S&P500 INDEX ETF	ETF500	292,72	281,07	313,03	312,00	6,59	--	64,37	71,74	0,01	2,26	125,00
1invest S&P500 IT ETF	ETF5IT	11,89	11,58	14,10	13,63	14,63	--	357,04	386,12	2,49	30,58	362,00

ASHBURTON MANAGEMENT COMP CODE	START	LOW	HIGH	END	1M %	DISTRIBUTION	MCAP OPEN	MCAP CLOSE	VOL	VALUE	TRADES	
Ashburton Global 1200 FOF ETF	ASHEQF	60,17	58,90	63,50	62,59	4,02	--	1195,52	1243,60	0,44	26,70	431,00

CLOUD ATLAS (RF) PROPRIETARY CODE	START	LOW	HIGH	END	1M %	DISTRIBUTION	MCAP OPEN	MCAP CLOSE	VOL	VALUE	TRADES	
AMI Big50 ex-SA ETF	AMIB50	8,90	8,00	9,99	8,25	-7,30	--	158,17	146,62	0,01	0,12	47,00
AMI RealEstate ex-SA ETF	AMIRE	20,45	19,90	21,20	20,50	0,24	--	1,70	1,70	0,00	0,01	26,00

CORESHARES INDEX TRACKER MA CODE	START	LOW	HIGH	END	1M %	DISTRIBUTION	MCAP OPEN	MCAP CLOSE	VOL	VALUE	TRADES	
CoreShares Global Prop	GLPROP	38,15	37,94	41,37	40,28	5,58	--	449,37	474,46	0,64	25,31	402,00
CoreShares GlobalDivTrax	GLODIV	14,89	14,53	15,52	15,23	2,28	--	731,42	748,13	1,74	26,12	345,00
CoreShares S&P 500	CSP500	57,96	56,00	61,89	61,14	5,49	--	1250,22	1303,52	0,37	21,58	527,00

Satrix Managers (RF) (Pty) Ltd	CODE	START	LOW	HIGH	END	1M %	DISTRIBUTION	MCAP OPEN	MCAP CLOSE	VOL	VALUE	TRADES
Satrix MSCI EMG Markets	STXEMG	53,74	52,01	55,84	55,18	2,68	--	1669,85	1802,88	2,20	118,05	932,00
Satrix MSCI World Feeder	STXWDM	56,70	55,19	61,00	59,26	4,51	--	4239,47	5382,92	4,95	281,44	1523,00
Satrix Nasdaq 100 Prtf	STXNDQ	106,49	103,00	118,62	116,83	9,71	--	2163,97	2374,09	0,63	69,60	1351,00
Satrix S&P 500 Feeder	STX500	59,09	57,34	63,99	62,20	5,26	--	1641,17	1764,87	1,04	62,40	1077,00
Satrix MSCI China ETF	STXCHN	52,23	49,47	54,33	53,41	2,26	--	1496,73	1541,23	1,23	62,95	1199,00
Satrix MSCI EM ESG ETF	STXEME	48,65	46,87	50,52	49,80	2,36	--	136,44	149,62	0,13	6,15	151,00
Satrix MSCI World ESG ETF	STXESG	50,78	49,61	53,87	53,17	4,71	--	96,90	106,78	0,10	5,06	138,00

SYGNIA ITRIX (RF) PROPRIETARY L CODE	START	LOW	HIGH	END	DISTRIBUTION	MCAP OPEN	MCAP CLOSE	VOL	VALUE	TRADES		
Sygnia Itrix 4Ind Rev Gb	SYG4IR	48,85	48,42	52,58	51,56	5,26	--	2194,11	2374,77	2,52	127,66	1758,00
Sygnia Itrix Eurostoxx50	SYGEU	70,31	67,96	72,09	70,76	0,64	--	3089,63	3137,71	0,86	60,53	849,00
Sygnia Itrix FTSE100	SYGUK	140,18	136,21	143,74	141,31	0,81	--	923,48	930,92	0,20	28,26	335,00
Sygnia Itrix Gbl Pro ETF	SYGPG	40,00	39,65	43,18	42,25	5,62	--	605,33	639,38	0,36	15,04	328,00
Sygnia Itrix MSCI Japan	SYGJP	15,01	14,88	15,73	15,42	2,73	--	737,86	773,43	1,64	25,01	269,00
Sygnia Itrix MSCI US	SYGUS	55,21	53,90	59,31	58,69	6,30	--	5708,38	6068,19	1,15	64,45	789,00
Sygnia Itrix MSCI World	SYGWD	41,42	40,40	43,59	42,98	3,77	--	10632,08	11116,18	11,59	490,76	1447,00
Sygnia Itrix S&P 500 ETF	SYG500	58,77	56,48	62,76	62,15	5,75	--	2648,70	2673,14	2,37	143,66	677,00

# MONTHLY DETAILED ETF INFORMATION

## COMMODITIES

		Prices in Rands				In Rands		Values in Mn's		in 000's   in Mn's		
INVEST ETF ISSUER (RF) LIMITED	CODE	START	LOW	HIGH	END	1M %	DISTRIBUTION	MCAP OPEN	MCAP CLOSE	VOL	VALUE	TRADES
1InvestGold ETF	ETFGLD	255,13	240,50	256,20	246,03	-3,57	--	1311,37	760,23	2,03	503,00	244,00
1InvestPalladium ETF	ETFPLD	379,86	280,02	384,86	378,84	-0,27	--	1122,13	1157,00	0,14	52,76	313,00
1InvestPlatinum ETF	ETFPLT	161,28	144,36	159,96	147,73	-8,40	--	4152,15	3818,08	0,20	29,98	244,00
1InvestRhodium ETF	ETFRHO	3197,77	2365,37	3222,79	2583,76	-19,20	--	541,08	442,61	0,01	25,17	614,00

FIRSTRAND BANK LIMITED	CODE	START	LOW	HIGH	END	1M %	DISTRIBUTION	MCAP OPEN	MCAP CLOSE	VOL	VALUE	TRADES
KR Custodial Certificate	KCCGLD	26789,50	25714,00	26763,00	25826,50	-3,59	--	844,27	813,92	0,00	11,41	17,00

NEWGOLD ISSUER (RF) LIMITED	CODE	START	LOW	HIGH	END	1M %	DISTRIBUTION	MCAP OPEN	MCAP CLOSE	VOL	VALUE	TRADES
New Gold Issuer Ltd	GLD	244,27	234,01	245,61	235,60	-3,55	--	16604,97	15992,04	1,77	422,87	2305,00
New Gold Platinum ETF	NGPLT	159,84	143,84	158,60	146,73	-8,20	--	9270,72	8436,97	1,91	287,38	526,00
NewGold Palladium ETF	NGPLD	379,91	345,20	380,91	379,45	-0,12	--	807,19	768,27	0,33	121,39	125,00

## SA & GLOBAL FIXED INCOME

		Prices in Rands				In Rands		Values in Mn's		in 000's   in Mn's		
STANLIB COLLECTIVE INVESTMEN' CODE	CODE	START	LOW	HIGH	END	1M %	DISTRIBUTION	MCAP OPEN	MCAP CLOSE	VOL	VALUE	TRADES
1Invest G7 Govt Bond ETF	ETFGGB	79,43	76,01	83,00	84,00	5,75	--	34,35	36,32	0,10	7,85	123,00
1Invest SA Bond ETF	ETFBND	82,30	79,00	83,85	83,04	0,90	--	49,38	49,82	0,04	3,02	159,00

ASHBURTON MANAGEMENT COMP CODE	CODE	START	LOW	HIGH	END	1M %	DISTRIBUTION	MCAP OPEN	MCAP CLOSE	VOL	VALUE	TRADES
Ashburton World GovB ETF	ASHWGB	7,10	6,86	7,39	7,29	2,68	--	121,66	124,91	0,41	2,89	121,00
Ashburton Inflation ETF	ASHINF	21,71	21,38	22,12	21,59	-0,55	--	402,39	400,17	0,22	4,88	114,00

FIRSTRAND BANK LIMITED	CODE	START	LOW	HIGH	END	1M %	DISTRIBUTION	MCAP OPEN	MCAP CLOSE	VOL	VALUE	TRADES
2YR Dollar Custodial Cert	DCCUS2	1387,50	1360,00	1442,00	1435,00	3,42	7,10	105,45	109,06	0,01	7,17	19,00
Dollar Custodial Cert	DCCUSD	1447,50	1420,10	1510,40	1498,30	3,51	9,84	123,04	202,27	0,02	31,98	58,00

NEWFUNDS COLLECTIVE INVESTM CODE	CODE	START	LOW	HIGH	END	1M %	DISTRIBUTION	MCAP OPEN	MCAP CLOSE	VOL	VALUE	TRADES
NEWFUNDS TRACI 3-M ETF	NFTRCI	28,00	27,90	28,22	28,12	0,43	--	232,87	233,87	0,39	10,96	142,00
NEWFUNDS GOVI ETF	NFGOVI	75,69	75,13	78,95	76,39	0,92	0,50	2605,19	2667,47	1,84	141,06	1370,00
NEWFUNDS ILBI ETF	NFILBI	76,73	75,32	77,80	75,78	-1,24	0,17	107,42	106,09	0,08	6,06	125,00
NFNAM 10 Bonds	NFNAMB	16,34	16,00	16,56	16,20	-0,86	--	310,66	308,00	0,15	2,50	74,00

Satrix Managers (RF) (Pty) Ltd	CODE	START	LOW	HIGH	END	1M %	DISTRIBUTION	MCAP OPEN	MCAP CLOSE	VOL	VALUE	TRADES
Satrix ILBI Portfolio	STXILB	6,57	6,48	6,98	6,50	-1,07	--	256,33	253,60	3,74	24,63	299,00
Satrix Global Bond ETF	STXGBD	37,04	35,87	38,63	38,04	2,70	--	66,72	76,12	0,19	7,39	69,00
Satrix SA Bond Portfolio	STXGOV	8,16	8,07	8,39	8,27	1,35	--	350,72	454,69	6,83	56,32	184,00

The information, data and compilations, or any part thereof, which make up the JSE ETF Factsheet ("Data") is being provided to you strictly for informational purposes. JSE Limited ("JSE") reserves the right to withdraw, modify, or replace the Data (or any part thereof) at any time.

To the extent allowed by law, JSE does not (expressly, tacitly or impliedly) guarantee or warrant the availability, sequence, accuracy, completeness, reliability or any other aspect of any of the Data or that the Data contained therein is up to date. To the extent allowed by law, neither the JSE nor any of its directors, officers, employees, contractors, agents or representatives are liable to any way to the reader/user or to any other natural or juristic person (Person) for any loss or damage as a result of any errors contained in the specification, for any loss arising from use of, or reliance on the Data in this JSE ETF Factsheet or any actions taken or not taken by or behalf of any Person in reliance on any Data in this JSE ETF Factsheet. You may not copy, reproduce, redistribute, alter or transmit any Data without the prior written consent of the JSE.

**The Johannesburg Stock Exchange** prides itself on a 130 year history as an effective, reputable trading platform. We are currently ranked the 19th largest stock exchange in the world based on market capitalization, and the largest exchange on the African continent. The JSE offers secure and efficient primary and secondary capital markets across a diverse range of asset classes which include equities, commodities, currencies, interest rates and bonds. We are the exchange of choice for local and international investors looking for investment opportunities across leading capital markets in South Africa and the broader African continent.

The JSE's achievements escalate through to this year's 20th anniversary of the first ETF listing on the local Exchange Traded Fund (ETF) market. Today, the ETF market capitalization is close to R90bn with over 70 listed ETFs on the JSE Main Board.

**Our Primary Markets Team** is a key access point for existing and/or potential issuers to gain exposure to local and international investor capital. The team focuses on listing companies and instruments on the Equity (Main Board and AltX) or Debt Market and aids in product development.

Contact the team: [listingontheJSE@jse.co.za](mailto:listingontheJSE@jse.co.za)

**Our Information Services Team** works to deliver world class market data to our clients. This data can often be customized on request providing our clients with the exact Intel required to make business and portfolio decisions.

We offer live, delayed, end of day, reference and historical market data for:

- Equities
- Indices
- Equity Derivatives
- Commodity Derivatives
- Commodity Derivatives
- Currency Derivatives
- Interest Rate Derivatives
- Bonds
- Market Announcements (SENS)

We have nearly 170 indices across a wide variety of methodologies and investment criteria.

Our partnership with FTSE Russell includes:

- FTSE/JSE All Share
- FTSE/JSE Top 40
- FTSE/JSE ESG
- FTSE/JSE Factor Indices
- FTSE/JSE Shariah
- FTSE/JSE RAFI and many more

We develop customised indices to suit your needs.

- Our other service offerings include:
- Bond ETP data
- Tick data
- Corporate Actions
- Business Intelligence Reports
- Valuations

Contact the team: [mdclients@jse.co.za](mailto:mdclients@jse.co.za)