

## MAY'S HIGHLIGHTS

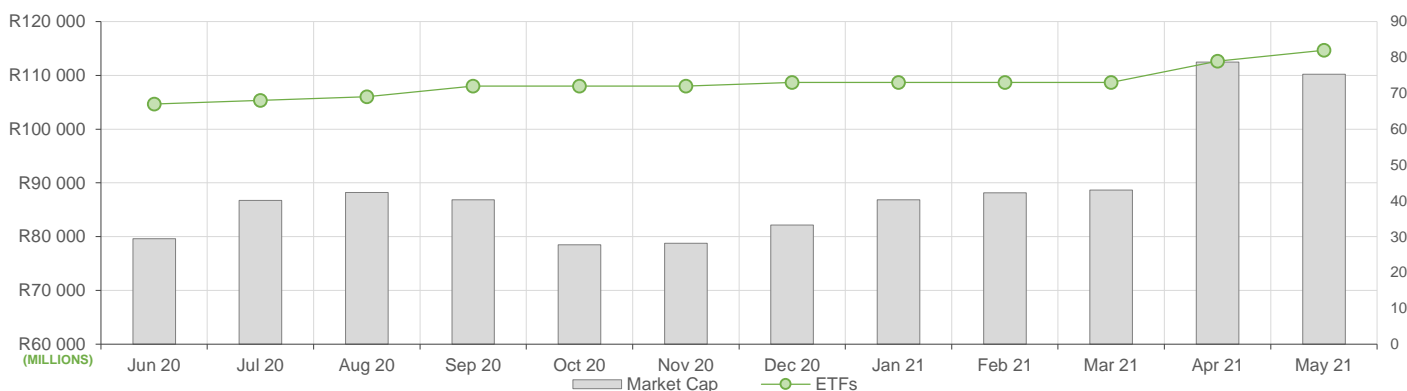
May showed increased ETF activity compared to April, here is what we have seen:

- ETF Market Capitalization of R110bn showed a marginal month-on-month decrease compared to the previous month's figure. ETF unit creations were higher compared to the previous month and redemptions were mostly seen in commodity based ETFs
- Month-on-month ETF value traded was almost double compared to April's activity, reflecting roughly R7.5bn in total value traded during May.
- Month-on-Month ETF returns showed slightly negative performances across global equity ETFs.

## NEW LISTINGS AND DELISTINGS

ETF	CODE	ISSUER	EVENT	DATE
CoreShares TotalWldStock	GLOBAL	CORESHARES	Listing	--
Sygnia Itrix MSCI EM 50	SYGEMF	SYGNIA ITRIX	Listing	--
NewFunds Reitway Global Property	NEWPRP	NEWFUNDS	Listing	--

## MARKET CAPITALISATION ANALYSIS | Total Industry



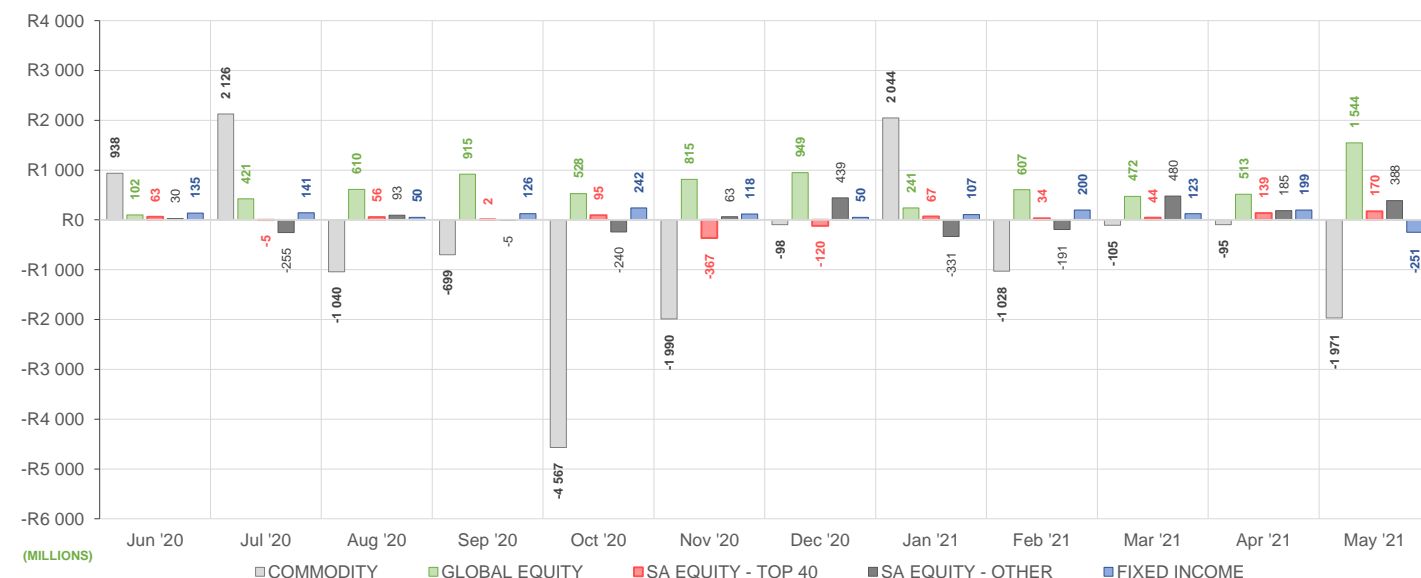
## NET DAILY EXCHANGE CREATIONS AND REDEMPTIONS | Top & Bottom Five ETFs

TOP 5 INSTRUMENTS	CODE	TOTAL DAILY CREATIONS	TOTAL DAILY REDEMPTIONS	NET MONTHLY CREATIONS
Sygnia Itrix MSCI EM 50	SYGEMF	R414 127 481	---	R414 127 481
Sygnia Itrix MSCI World	SYGWD	R441 910 300	-R192 922 086	R248 988 214
Satrix MSCI World Feeder	STXWDM	R204 813 500	---	R204 813 500
1investPalladium ETF	ETFPLD	R198 542 500	---	R198 542 500
AMI Big50 ex-SA ETF	AMIB50	R139 400 000	---	R139 400 000

BOTTOM 5 INSTRUMENTS	CODE	TOTAL DAILY CREATIONS	TOTAL DAILY REDEMPTIONS	NET MONTHLY CREATIONS
New Gold Platinum ETF	NGPLT	R257 393 500	-R445 051 000	-R187 657 500
Satrix SA Bond Portfolio	STXGOV	---	-R217 140 000	-R217 140 000
NewGold Palladium ETF	NGPLD	---	-R267 887 000	-R267 887 000
1investRhodium ETF	ETFRHO	---	-R385 321 220	-R385 321 220
1investGold ETF	ETFGLD	R50 899 500	-R1 323 653 300	-R1 272 753 800

Considers the daily update to total number of issued units listed on the exchange over the calendar month, with Creations representing a day-on-day increase in total number of listed units, and Redemptions representing a decrease. An average day-on-day price is used to estimate the ZAR value of each net daily movement. No secondary market transactions are considered.

## NET MONTHLY EXCHANGE CREATIONS AND REDEMPTIONS



## MONTHLY ETF PERFORMANCE | Top & Bottom Five ETFs

TOP 5 INSTRUMENTS	CODE	TOTAL RETURN	VOLATILITY	MAX DRAW DOWN
AMI Big50 ex-SA ETF	AMIB50	12,09%	28,87%	-7,68%
Satrix FINI Portfolio	STXFIN	8,45%	4,88%	-1,78%
NF Equity Value ETF	NFEVAL	6,26%	4,12%	-1,58%
Ashburton Mid Cap ETF	ASHMID	5,91%	4,07%	-1,93%
Satrix DIVI Plus Portfolio	STXDIV	4,51%	4,34%	-3,27%

BOTTOM 5 INSTRUMENTS	CODE	TOTAL RETURN	VOLATILITY	MAX DRAW DOWN
Sygnia Itrix 4Ind Rev Gb	SYG4IR	-7,29%	8,12%	-10,54%
New Gold Platinum ETF	NGPLT	-7,53%	7,59%	-11,10%
NewGold Palladium ETF	NGPLD	-9,73%	6,53%	-12,17%
1investPalladium ETF	ETFPLD	-9,76%	6,43%	-12,44%
1investRhodium ETF	ETFRHO	-13,27%	28,18%	-34,67%

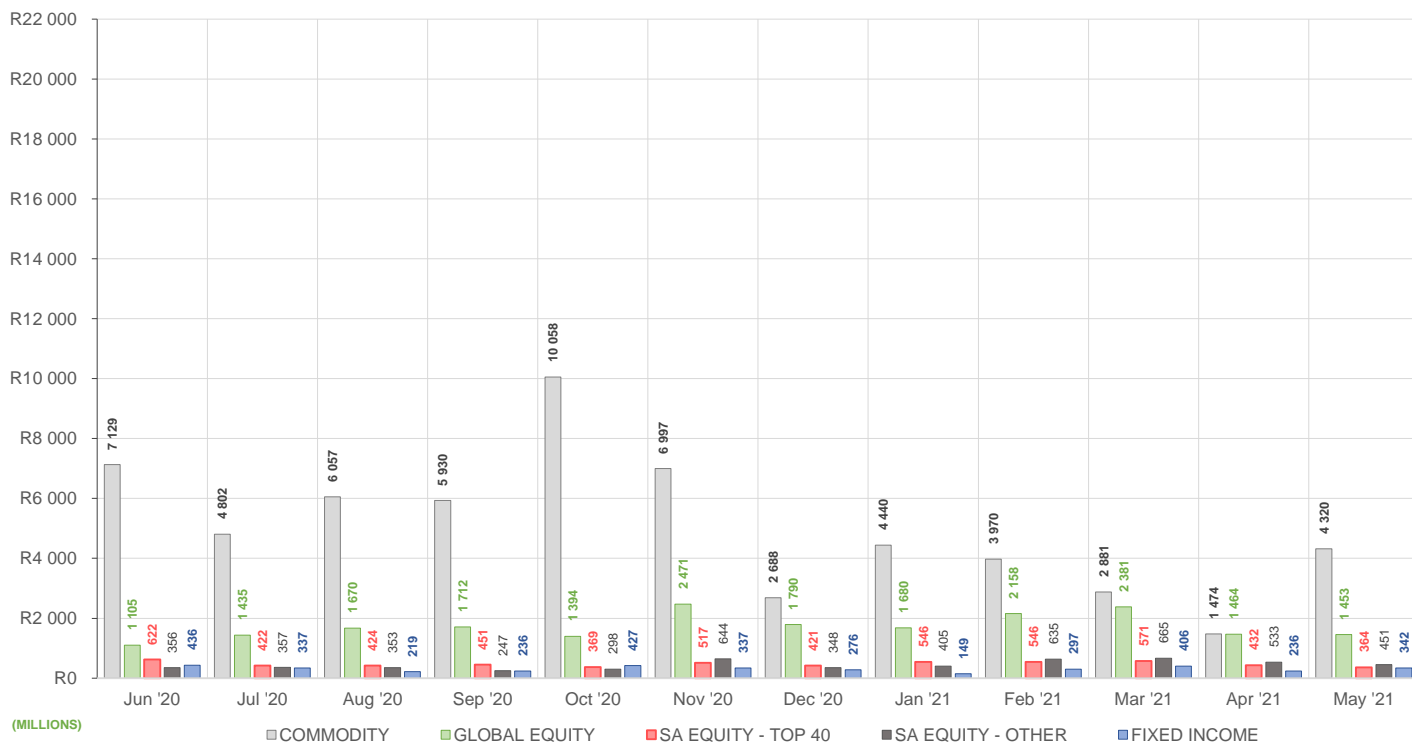
## ROLLING 12-MONTH ETF PERFORMANCE | Top & Bottom Five ETFs

TOP 5 INSTRUMENTS	CODE	TOTAL RETURN	VOLATILITY	MAX DRAW DOWN
1investRhodium ETF	ETFRHO	104,53%	54,07%	-39,42%
NF Equity Value ETF	NFEVAL	57,40%	23,21%	-15,16%
Satrix RESI Portfolio	STXRES	50,59%	27,05%	-21,54%
Satrix DIVI Plus Portfolio	STXDIV	49,24%	18,88%	-8,14%
Sygnia Itrix 4Ind Rev Gb	SYG4IR	48,65%	30,21%	-23,65%

BOTTOM 5 INSTRUMENTS	CODE	TOTAL RETURN	VOLATILITY	MAX DRAW DOWN
Ashburton World GovB ETF	ASHWGB	-20,19%	16,36%	-24,76%
Satrix Global Bond ETF	STXGBD	-20,57%	15,07%	-21,03%
1invest G7 Govt Bond ETF	ETFGGB	-20,97%	16,94%	-25,73%
Dollar Custodial Cert	DCCUSD	-23,21%	80,43%	-49,29%
AMI Big50 ex-SA ETF	AMIB50	-27,23%	78,71%	-58,94%

Total Return is the monthly/annual performance incorporating price performance and immediate reinvestment of dividends. Volatility is the based on daily price standard deviation and presented as a monthly/annual volatility. Maximum draw down measures the worst case return outcome for an investor over the course of the period – based on purchase and subsequent sale timing that results in the largest loss of capital.

## MONTHLY VALUE TRADED FOR ALL ETFs



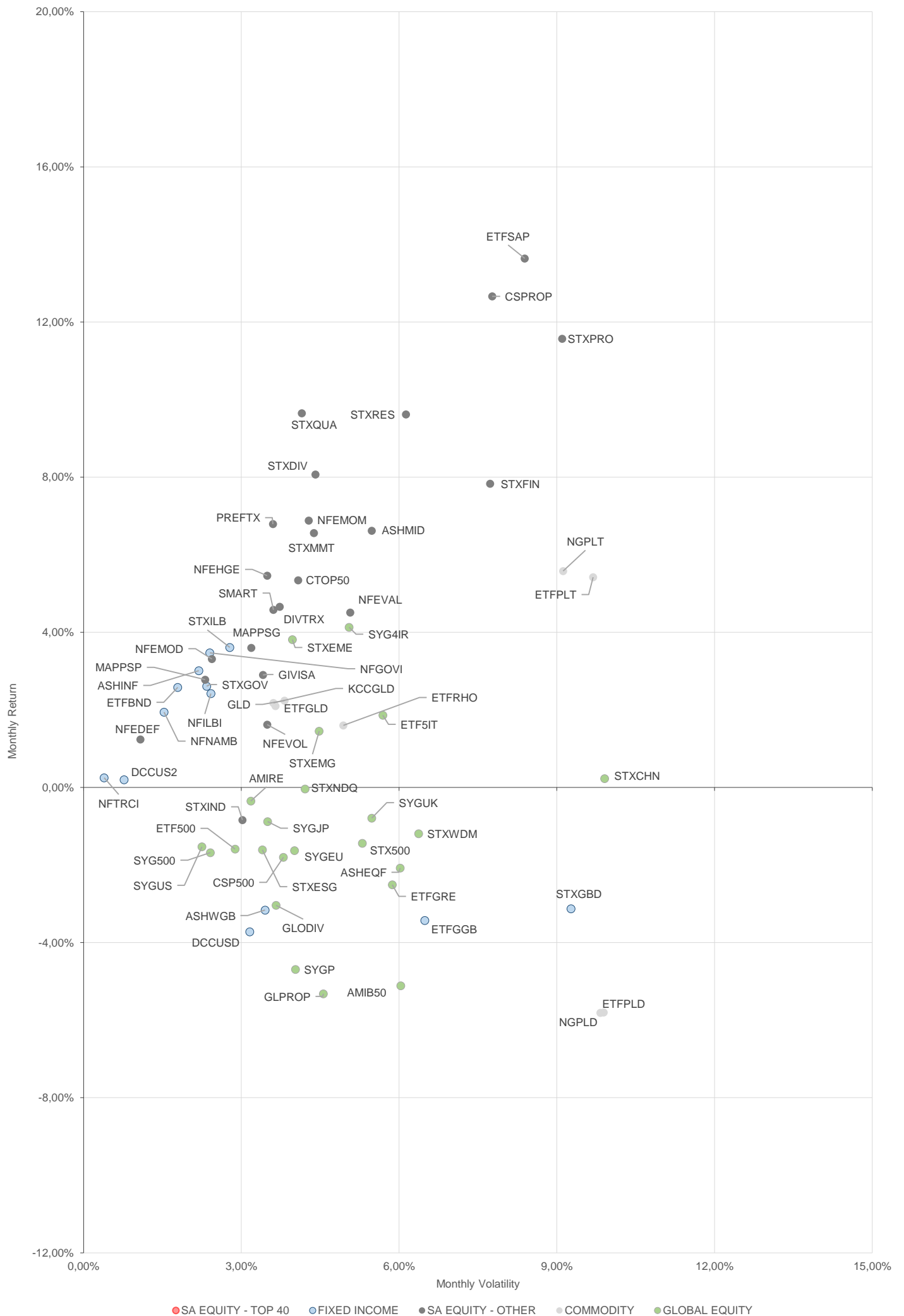
## MONTHLY ETF TRADE STATISTICS | Top & Bottom Five Funds

TOP 5 INSTRUMENTS	CODE	VOLUME	VALUE	TRADES	LIQUIDITY
New Gold Platinum ETF	NGPLT	6 331 557	R1 057 745 389,00	1 998	10,90%
Ashburton Inflation ETF	ASHINF	6 519 982	R140 258 577,30	208	39,43%
Satrix FINI Portfolio	STXFIN	5 408 702	R68 523 753,79	492	8,82%
Ashburton Mid Cap ETF	ASHMID	5 110 367	R37 048 525,48	487	6,80%
Satrix DIVI Plus Portfolio	STXDIV	12 699 469	R34 350 799,53	784	2,02%

BOTTOM 5 INSTRUMENTS	CODE	VOLUME	VALUE	TRADES	LIQUIDITY
2YR Dollar Custodial Cert	DCCUS2	4 507	R6 454 541,00	29	5,93%
Dollar Custodial Cert	DCCUSD	2 034	R3 032 144,55	21	2,39%
1INVEST S&P500 INDEX ETF	ETF500	5 096	R1 522 494,56	163	2,32%
KR Custodial Certificate	KCCGLD	24	R639 404,00	14	0,08%
AMI RealEstate ex-SA ETF	AMIRE	1 073	R21 787,40	23	1,29%

Volume, Value and Trades are the aggregate counts of all trade activity in the ETF for the month on the JSE equity market. This includes central order book and reported trades, but excludes creations and redemptions. Liquidity is the total volume traded expressed as a percentage of the number of listed instruments for the ETF as at the end of the month.

# TOTAL RETURN VERSUS VOLATILITY



● SA EQUITY - TOP 40 ● FIXED INCOME ● SA EQUITY - OTHER ● COMMODITY ● GLOBAL EQUITY

# MONTHLY DETAILED ETF INFORMATION

## SA EQUITY | TOP 40

Prices in Rands

In Rands

Values in Mn's

in 000's | in Mn's

STANLIB COLLECTIVE INVESTMEN' CODE	START	LOW	HIGH	END	1M %	DISTRIBUTION	MCAP OPEN	MCAP CLOSE	VOL	VALUE	TRADES	
1invest SWIX 40 ETF	ETFSWX	12,27	12,00	12,66	12,43	1,30	--	1874,23	1898,67	0,12	1,42	73,00
1invest TOP 40 ETF	ETFT40	60,98	59,95	67,00	61,88	1,48	--	798,30	810,08	0,01	0,75	123,00

ASHBURTON MANAGEMENT COMP CODE	START	LOW	HIGH	END	1M %	DISTRIBUTION	MCAP OPEN	MCAP CLOSE	VOL	VALUE	TRADES	
Ashburton Top 40 ETF	ASHT40	61,17	59,80	63,53	62,14	1,59	--	1837,44	1922,51	1,00	61,94	501,00

Satrix Managers (RF) (Pty) Ltd	CODE	START	LOW	HIGH	END	1M %	DISTRIBUTION	MCAP OPEN	MCAP CLOSE	VOL	VALUE	TRADES
Satrix 40 Portfolio	STX40	61,25	60,00	64,00	62,23	1,60	--	10056,76	10323,46	3,39	207,77	1973,00
Satrix SWIX Top 40 Portfolio	STXSWX	12,31	11,97	12,71	12,45	1,14	--	375,68	379,95	1,07	13,26	133,00

SYGNIA ITRIX (RF) PROPRIETARY L CODE	START	LOW	HIGH	END	1M %	DISTRIBUTION	MCAP OPEN	MCAP CLOSE	VOL	VALUE	TRADES	
Sygnia Itrix SWIX40 ETF	SYGSW4	12,35	12,12	12,61	12,48	1,05	--	166,01	167,76	0,14	1,74	52,00
Sygnia Itrix Top 40 ETF	SYGT40	61,89	60,95	64,13	62,82	1,50	--	351,21	369,05	0,15	9,49	110,00

## SA EQUITY | OTHER

Prices in Rands

In Rands

Values in Mn's

in 000's | in Mn's

STANLIB COLLECTIVE INVESTMEN' CODE	START	LOW	HIGH	END	1M %	DISTRIBUTION	MCAP OPEN	MCAP CLOSE	VOL	VALUE	TRADES	
1invest SA Property ETF	ETFSAP	31,66	29,92	34,99	31,19	-1,48	--	727,01	753,80	1,69	53,30	551,00

ASHBURTON MANAGEMENT COMP CODE	START	LOW	HIGH	END	1M %	DISTRIBUTION	MCAP OPEN	MCAP CLOSE	VOL	VALUE	TRADES	
Ashburton Mid Cap ETF	ASHMID	7,05	6,96	7,63	7,53	6,81	--	505,49	566,26	4,39	31,91	442,00

CORESHARES INDEX TRACKER MA CODE	START	LOW	HIGH	END	1M %	DISTRIBUTION	MCAP OPEN	MCAP CLOSE	VOL	VALUE	TRADES	
CoreShares DivTrax	DIVTRX	21,56	21,60	22,56	22,38	3,80	--	138,10	143,35	0,14	3,18	166,00
CORESHARESTOP50	CTOP50	26,60	26,28	27,73	27,50	3,38	--	1421,10	1469,18	1,41	38,42	147,00
CoreShares SciBeta M-FI	SMART	42,49	42,39	44,83	44,69	5,18	--	120,30	126,52	0,06	2,58	112,00
CoreShares PrefTrax	PREFTX	8,04	7,95	8,88	8,02	-0,25	--	320,31	348,72	2,03	16,45	255,00
CoreShares SAProp	CSPROP	10,52	9,80	10,68	10,23	-2,76	--	264,49	257,20	0,52	5,31	273,00

NEWFUNDS COLLECTIVE INVESTM CODE	START	LOW	HIGH	END	1M %	DISTRIBUTION	MCAP OPEN	MCAP CLOSE	VOL	VALUE	TRADES	
NEWFUNDS EQUITY MOM ETF	NFEMOM	38,98	38,80	41,64	40,68	4,36	--	330,95	345,38	0,70	27,91	94,00
Newfunds MAPPs Growth	MAPPSPG	25,31	24,76	25,90	25,64	1,30	--	45,73	46,32	0,02	0,58	48,00
Newfunds MAPPs Protect	MAPPSP	42,80	42,50	43,90	43,69	2,08	--	47,46	48,44	0,01	0,63	38,00
NewFunds S&P GIVI SA T50	GIVISA	39,57	39,48	41,39	40,29	1,82	--	81,41	82,89	0,01	0,29	49,00
NEWFUNDS SHARIA TOP40	NFSH40	4,05	3,88	4,31	4,04	-0,25	--	63,08	62,92	0,29	1,20	106,00
NF Equity Value ETF	NFEVAL	9,64	9,58	10,44	10,35	7,37	--	175,63	188,56	0,27	2,72	64,00
NF Low Volatility ETF	NFEVOL	9,19	9,10	9,61	9,55	3,92	--	111,68	116,05	0,01	0,08	29,00
NF VM Defensive EquityETF	NFEDEF	10,03	10,01	10,24	10,23	1,99	--	51,99	53,03	0,01	0,08	14,00
NF VM High Growth EQETF	NFEHGE	9,05	9,05	9,54	9,41	3,98	--	66,74	69,40	0,01	0,10	29,00
NF VM Moderate Equity ETF	NFEMOD	9,39	9,38	9,66	9,66	2,88	--	52,25	53,75	0,13	1,27	22,00

Satrix Managers (RF) (Pty) Ltd	CODE	START	LOW	HIGH	END	1M %	DISTRIBUTION	MCAP OPEN	MCAP CLOSE	VOL	VALUE	TRADES
Satrix DIVI Plus Portfolio	STXDIV	2,63	2,61	2,79	2,78	5,70	--	1644,78	1744,14	11,65	31,56	711,00
Satrix FINI Portfolio	STXFIN	12,31	12,15	13,72	13,60	10,48	--	762,44	834,18	5,30	67,19	468,00
Satrix INDI Portfolio	STXIND	82,69	79,51	85,66	85,02	2,82	--	1942,26	2116,02	0,19	15,97	334,00
Satrix Momentum Portfolio	STXMMT	11,07	10,91	11,53	11,51	3,97	--	31,08	32,32	0,06	0,67	56,00
Satrix Property Portfolio	STXPRO	9,50	8,95	9,74	9,23	-2,84	--	226,78	297,87	2,14	20,01	943,00
Satrix Quality SA Port	STXQUA	8,55	8,26	8,78	8,49	-0,70	--	78,12	73,32	0,24	2,05	81,00
Satrix RAFI 40 Portfolio	STXRAF	16,46	16,30	17,28	17,18	4,37	0,10	955,95	994,33	0,98	16,68	260,00
Satrix RESI Portfolio	STXRES	70,72	66,96	75,33	69,71	-1,43	--	883,15	975,10	1,57	111,88	918,00

## GLOBAL EQUITY

Prices in Rands

In Rands

Values in Mn's

in 000's | in Mn's

STANLIB COLLECTIVE INVESTMEN' CODE	START	LOW	HIGH	END	1M %	DISTRIBUTION	MCAP OPEN	MCAP CLOSE	VOL	VALUE	TRADES	
1invest Global REIT ETF	ETFGRE	18,98	18,40	20,24	19,59	3,21	0,15	113,77	117,62	0,03	0,68	94,00
1invest MSCI World ETF	ETFWLD	56,83	56,20	60,00	58,26	2,52	--	141,45	150,83	0,16	8,95	226,00
1INVEST S&P500 INDEX ETF	ETF500	296,59	295,01	308,40	305,63	3,05	--	60,78	67,21	0,01	4,51	145,00
1invest S&P500 IT ETF	ETF5IT	12,41	12,05	13,19	12,70	2,34	--	363,35	373,49	1,15	14,69	368,00

ASHBURTON MANAGEMENT COMP CODE	START	LOW	HIGH	END	1M %	DISTRIBUTION	MCAP OPEN	MCAP CLOSE	VOL	VALUE	TRADES	
Ashburton Global 1200 FOF ETF	ASHEQF	60,81	60,50	62,99	62,19	2,27	--	1171,75	1235,65	1,18	73,04	592,00

CLOUD ATLAS (RF) PROPRIETARY CODE	START	LOW	HIGH	END	1M %	DISTRIBUTION	MCAP OPEN	MCAP CLOSE	VOL	VALUE	TRADES	
AMI Big50 ex-SA ETF	AMIB50	7,13	4,85	9,95	7,94	11,36	--	5,50	6,13	0,05	0,37	59,00
AMI RealEstate ex-SA ETF	AMIRE	20,25	20,00	20,95	20,87	3,06	--	1,68	1,73	0,00	0,04	26,00

CORESHARES INDEX TRACKER MA CODE	START	LOW	HIGH	END	1M %	DISTRIBUTION	MCAP OPEN	MCAP CLOSE	VOL	VALUE	TRADES	
CoreShares Global Prop	GLPROP	38,19	37,44	39,23	39,11	2,41	0,33	449,84	460,68	0,32	12,48	274,00
CoreShares GlobalDivTrax	GLODIV	15,24	14,65	15,50	14,80	-2,89	--	748,62	727,00	3,31	50,23	505,00
CoreShares S&P 500	CSP500	60,35	56,62	61,08	57,56	-4,62	--	1301,77	1241,59	0,43	25,21	574,00

Satrix Managers (RF) (Pty) Ltd	CODE	START	LOW	HIGH	END	1M %	DISTRIBUTION	MCAP OPEN	MCAP CLOSE	VOL	VALUE	TRADES
Satrix MSCI EMG Markets	STXEMG	54,24	50,40	54,49	52,95	-2,38	--	1636,57	1645,30	2,26	118,79	1317,00
Satrix MSCI World Feeder	STXWDM	58,51	55,30	58,78	56,33	-3,73	--	4187,57	4211,80	3,87	220,03	1231,00
Satrix Nasdaq 100 Prtf	STXNDQ	113,21	102,32	113,09	106,21	-6,18	--	2289,21	2158,28	0,81	85,96	1416,00
Satrix S&P 500 Feeder	STX500	61,82	57,83	62,00	58,95	-4,64	--	1673,72	1637,28	1,08	64,52	912,00
Satrix MSCI China ETF	STXCHN	53,74	48,52	54,10	51,45	-4,26	--	1464,77	1474,38	1,93	98,45	1787,00
Satrix MSCI EM ESG ETF	STXEME	48,84	45,26	49,17	48,11	-1,49	--	132,09	134,92	0,22	10,38	191,00
Satrix MSCI World ESG ETF	STXESG	52,44	49,21	52,67	50,57	-3,57	--	94,82	96,50	0,16	8,11	185,00

SYGNIA ITRIX (RF) PROPRIETARY L CODE	START	LOW	HIGH	END	DISTRIBUTION	MCAP OPEN	MCAP CLOSE	VOL	VALUE	TRADES		
Sygnia Itrix 4Ind Rev Gb	SYG4IR	51,24	44,82	51,39	48,45	-4,64	--	2265,59	2176,15	4,11	195,51	2195,00
Sygnia Itrix Eurostoxx50	SYGEU	70,72	66,83	71,53	69,58	-1,61	--	3079,36	3057,55	0,71	49,00	592,00
Sygnia Itrix FTSE100	SYGUK	141,46	137,01	143,50	138,61	-2,01	--	903,62	913,13	0,17	23,39	345,00
Sygnia Itrix Gbl Pro ETF	SYGPG	40,79	38,73	41,16	39,74	-2,57	--	617,29	601,40	0,70	28,19	261,00
Sygnia Itrix MSCI Japan	SYGJP	15,64	14,59	15,76	15,00	-4,09	--	753,19	737,37	1,56	23,48	359,00
Sygnia Itrix MSCI US	SYGUS	57,68	54,06	58,08	55,15	-4,39	--	6001,26	5702,18	1,38	76,88	843,00
Sygnia Itrix MSCI World	SYGWD	42,59	40,13	43,14	41,16	-3,36	--	10674,40	10565,34	4,51	187,27	1246,00
Sygnia Itrix S&P 500 ETF	SYG500	61,41	57,91	64,00	58,66	-4,48	--	2632,73	2643,74	0,98	58,30	578,00

# MONTHLY DETAILED ETF INFORMATION

## COMMODITIES

		Prices in Rands				In Rands		Values in Mn's		in 000's   in Mn's		
INVEST ETF ISSUER (RF) LIMITED	CODE	START	LOW	HIGH	END	1M %	DISTRIBUTION	MCAP OPEN	MCAP CLOSE	VOL	VALUE	TRADES
1InvestGold ETF	ETFGLD	252,69	240,50	270,00	256,35	1,45	--	2569,86	1317,64	2,69	676,94	289,00
1InvestPalladium ETF	ETFPLD	418,74	366,44	426,22	378,47	-9,62	--	1027,61	1118,02	0,39	154,27	197,00
1InvestPlatinum ETF	ETFPLT	174,35	158,49	178,00	160,25	-8,09	--	4645,56	4125,64	1,04	174,26	393,00
1InvestRhodium ETF	ETFRHO	3932,50	744,05	3999,96	3400,23	-13,54	--	1227,75	575,34	0,13	463,35	819,00

FIRSTRAND BANK LIMITED	CODE	START	LOW	HIGH	END	1M %	DISTRIBUTION	MCAP OPEN	MCAP CLOSE	VOL	VALUE	TRADES
KR Custodial Certificate	KCCGLD	26511,00	26200,00	27110,00	26886,00	1,41	--	835,49	847,31	0,00	0,64	14,00

NEWGOLD ISSUER (RF) LIMITED	CODE	START	LOW	HIGH	END	1M %	DISTRIBUTION	MCAP OPEN	MCAP CLOSE	VOL	VALUE	TRADES
New Gold Issuer Ltd	GLD	242,20	235,82	249,15	245,31	1,28	--	16391,60	16675,67	3,25	793,01	3512,00
New Gold Platinum ETF	NGPLT	173,50	153,00	179,21	157,82	-9,04	--	10340,60	9169,34	6,33	1,056,95	1981,00
NewGold Palladium ETF	NGPLD	418,08	367,26	426,19	378,64	-9,43	--	1180,95	804,49	1,38	525,23	300,00

## SA & GLOBAL FIXED INCOME

		Prices in Rands				In Rands		Values in Mn's		in 000's   in Mn's		
STANLIB COLLECTIVE INVESTMEN' CODE	CODE	START	LOW	HIGH	END	1M %	DISTRIBUTION	MCAP OPEN	MCAP CLOSE	VOL	VALUE	TRADES
1Invest G7 Govt Bond ETF	ETFGGB	83,85	74,60	87,00	79,73	-4,91	--	36,26	34,48	0,05	4,32	100,00
1Invest SA Bond ETF	ETFBND	79,86	79,67	82,50	82,07	2,77	--	47,92	49,24	0,06	4,59	194,00

ASHBURTON MANAGEMENT COMP CODE	CODE	START	LOW	HIGH	END	1M %	DISTRIBUTION	MCAP OPEN	MCAP CLOSE	VOL	VALUE	TRADES
Ashburton World GovB ETF	ASHWGB	7,41	7,00	7,53	7,08	-4,45	0,03	126,97	121,31	0,88	6,37	168,00
Ashburton Inflation ETF	ASHINF	21,02	20,70	22,16	21,71	3,28	--	343,36	358,97	6,51	140,13	201,00

FIRSTRAND BANK LIMITED	CODE	START	LOW	HIGH	END	1M %	DISTRIBUTION	MCAP OPEN	MCAP CLOSE	VOL	VALUE	TRADES
2YR Dollar Custodial Cert	DCCUS2	1457,50	1389,00	1471,00	1384,50	-5,01	--	110,77	105,22	0,00	6,45	28,00
Dollar Custodial Cert	DCCUSD	1520,85	1446,10	1524,60	1448,90	-4,73	--	129,27	123,16	0,00	2,04	20,00

NEWFUNDS COLLECTIVE INVESTM CODE	CODE	START	LOW	HIGH	END	1M %	DISTRIBUTION	MCAP OPEN	MCAP CLOSE	VOL	VALUE	TRADES
NEWFUNDS TRACI 3-M ETF	NFTRCI	27,96	26,60	28,12	28,03	0,25	--	232,54	233,12	0,21	5,86	139,00
NEWFUNDS GOVI ETF	NFGOVI	73,12	73,74	76,70	75,55	3,32	0,53	2516,73	2600,37	1,89	141,69	1043,00
NEWFUNDS ILBI ETF	NFILBI	74,25	73,67	77,12	76,65	3,23	0,17	103,95	107,31	0,03	2,06	83,00
NFNAM 10 Bonds	NFNAMB	16,01	15,93	16,42	16,25	1,50	--	348,41	308,95	2,80	45,21	650,00

Satrix Managers (RF) (Pty) Ltd	CODE	START	LOW	HIGH	END	1M %	DISTRIBUTION	MCAP OPEN	MCAP CLOSE	VOL	VALUE	TRADES
Satrix ILBI Portfolio	STXILB	6,34	6,07	6,69	6,57	3,63	--	241,02	256,33	1,59	10,24	133,00
Satrix SA Bond Portfolio	STXGOV	7,90	7,85	8,23	8,15	3,16	--	544,95	342,14	14,53	117,75	213,00
Satrix Global Bond ETF	STXGBD	38,63	36,83	39,10	37,11	-3,93	--	65,72	63,13	0,21	8,06	103,00

The information, data and compilations, or any part thereof, which make up the JSE ETF Factsheet ("Data") is being provided to you strictly for informational purposes. JSE Limited ("JSE") reserves the right to withdraw, modify, or replace the Data (or any part thereof) at any time.

To the extent allowed by law, JSE does not (expressly, tacitly or impliedly) guarantee or warrant the availability, sequence, accuracy, completeness, reliability or any other aspect of any of the Data or that the Data contained therein is up to date. To the extent allowed by law, neither the JSE nor any of its directors, officers, employees, contractors, agents or representatives are liable to any way to the reader/user or to any other natural or juristic person (Person) for any loss or damage as a result of any errors contained in the specification, for any loss arising from use of, or reliance on the Data in this JSE ETF Factsheet or any actions taken or not taken by or behalf of any Person in reliance on any Data in this JSE ETF Factsheet. You may not copy, reproduce, redistribute, alter or transmit any Data without the prior written consent of the JSE.

**The Johannesburg Stock Exchange** prides itself on a 130 year history as an effective, reputable trading platform. We are currently ranked the 19th largest stock exchange in the world based on market capitalization, and the largest exchange on the African continent. The JSE offers secure and efficient primary and secondary capital markets across a diverse range of asset classes which include equities, commodities, currencies, interest rates and bonds. We are the exchange of choice for local and international investors looking for investment opportunities across leading capital markets in South Africa and the broader African continent.

The JSE's achievements escalate through to this year's 20th anniversary of the first ETF listing on the local Exchange Traded Fund (ETF) market. Today, the ETF market capitalization is close to R90bn with over 70 listed ETFs on the JSE Main Board.

**Our Primary Markets Team** is a key access point for existing and/or potential issuers to gain exposure to local and international investor capital. The team focuses on listing companies and instruments on the Equity (Main Board and AltX) or Debt Market and aids in product development.

Contact the team: [listingontheJSE@jse.co.za](mailto:listingontheJSE@jse.co.za)

**Our Information Services Team** works to deliver world class market data to our clients. This data can often be customized on request providing our clients with the exact Intel required to make business and portfolio decisions.

We offer live, delayed, end of day, reference and historical market data for:

- Equities
- Indices
- Equity Derivatives
- Commodity Derivatives
- Commodity Derivatives
- Currency Derivatives
- Interest Rate Derivatives
- Bonds
- Market Announcements (SENS)

We have nearly 170 indices across a wide variety of methodologies and investment criteria.

Our partnership with FTSE Russell includes:

- FTSE/JSE All Share
- FTSE/JSE Top 40
- FTSE/JSE ESG
- FTSE/JSE Factor Indices
- FTSE/JSE Shariah
- FTSE/JSE RAFI and many more

We develop customised indices to suit your needs.

- Our other service offerings include:
- Bond ETP data
- Tick data
- Corporate Actions
- Business Intelligence Reports
- Valuations

Contact the team: [mdclients@jse.co.za](mailto:mdclients@jse.co.za)