

# ETF Factsheet - August 2023



WWW.JSE.CO.ZA

INFO@JSE.CO.ZA

+27 11 520 7000

August showed slightly decreased ETF activity compared to July, here is what we have seen:

- ETF Market Capitalization a showed a slight month-on-month increase of 3%. ETF unit creations were largely reflected in global equity ETFs.
- Month-on-month ETF value traded was lower compared to July's activity, reflecting roughly R6.2bn in total value traded during the month.
- Month-on-Month ETF returns showed a majority of negative performances across local equity ETFs and positive performance across fixed income ETFs

## NEW LISTINGS & DELISTINGS

ETF	CODE	ISSUER	EVENT	DATE
CSA Actively Managed ETF	APACXJ	COESHARES INDEX TRACKER MANAGERS (RF) PROPRIET.	Listing	---

## MARKET CAPITALISATION ANALYSIS | Total Industry



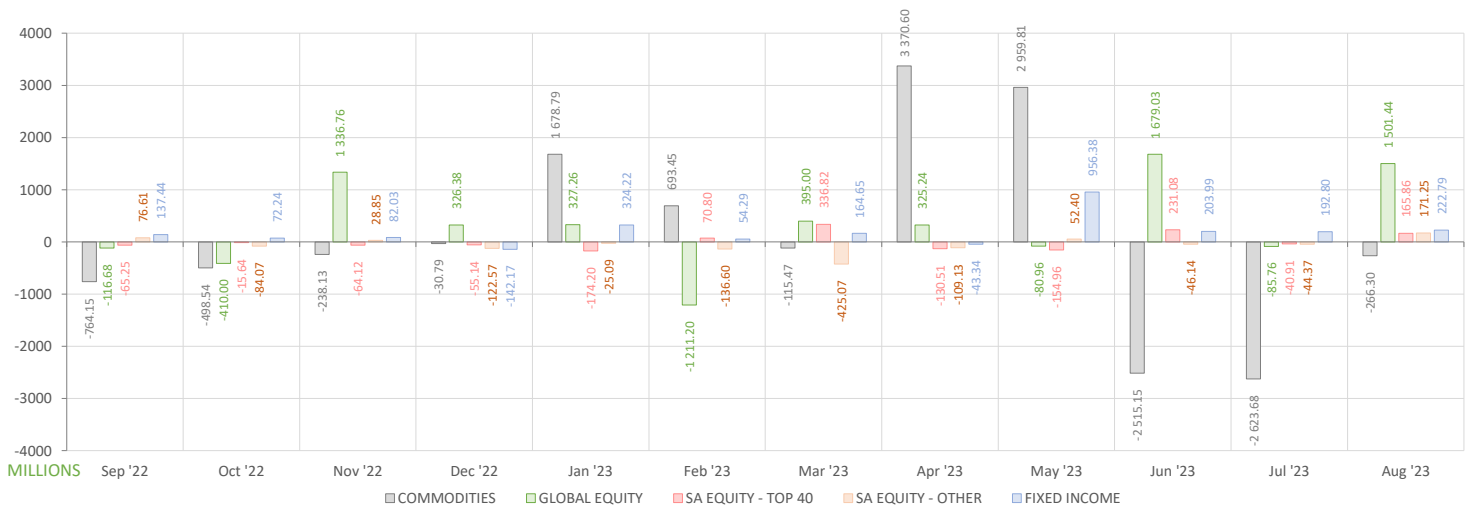
## NET DAILY EXCHANGE CREATION & REDEMPTIONS | Top & Bottom Five ETFs

TOP FIVE INSTRUMENTS	CODE	TOTAL DAILY CREATIONS	TOTAL DAILY REDEMPTIONS	NET MONTHLY CREATIONS
Satrix MSCI World Feeder	STXWDM	R698 602 000.00	---	R698 602 000.00
CSA Actively Managed ETF	APACXJ	R653 071 555.80	---	R653 071 555.80
Sygnia Itrix MSCI World	SYGWD	R531 240 661.70	---	R531 240 661.70
Satrix 40 Portfolio	STX40	R137 660 000.00	-R14 103 000.00	R123 557 000.00
FNB WORLD GOVBOND ETF	FNBWGB	R106 175 000.00	---	R106 175 000.00

BOTTOM FIVE INSTRUMENTS	CODE	TOTAL DAILY CREATIONS	TOTAL DAILY REDEMPTIONS	NET MONTHLY CREATIONS
Sygnia Itrix Top 40 ETF	SYGT40	---	-R27 531 618.80	-R27 531 618.80
Sygnia Itrix New China Sectors ETF	SYGCN	---	-R101 478 355.20	-R101 478 355.20
Satrix MSCI China ETF	STXCHN	---	-R234 518 000.00	-R234 518 000.00
New Gold Platinum ETF	NGPLT	---	-R263 781 000.00	-R263 781 000.00
Sygnia Itrix MSCI EM 50	SYGEMF	---	-R342 767 834.40	-R342 767 834.40

Considers the daily update to total number of issued units listed on the exchange over the calendar month, with Creations representing a day-on-day increase in total number of listed units, and Redemptions representing a decrease. An average day-on-day price is used to estimate the ZAR value of each net daily movement. No secondary market transactions are considered.

## NET MONTHLY EXCHANGE CREATIONS & REDEMPTIONS



## MONTHLY ETF PERFORMANCE | Top & Bottom Five ETFs

TOP FIVE INSTRUMENTS	CODE	TOTAL RETURN	VOLATILITY	MAX DRAW DOWN
1InvestPlatinum ETF	ETFPLT	8.71%	5.17%	-2.46%
New Gold Platinum ETF	NGPLT	8.62%	5.22%	-2.24%
2YR Dollar Custodial Cert	DCCUS2	4.34%	4.72%	-3.19%
1Invest US Short-Date ETF	ETFUSD	4.32%	4.90%	-3.17%
Sygnia Itrix SOL H150	SYGH	4.22%	4.88%	-4.56%

BOTTOM FIVE INSTRUMENTS	CODE	TOTAL RETURN	VOLATILITY	MAX DRAW DOWN
Satrix INDI Portfolio	STXIND	-5.51%	3.75%	-6.43%
Satrix Shariah T40 ETF	STXSHA	-6.94%	4.93%	-9.51%
Satrix RESI Portfolio	STXRES	-7.96%	6.24%	-12.32%
Africa Sovereign Bond ETF	ASBI	NULL	NULL	NULL
AMI Big50 ex-SA ETF	AMIB50	NULL	NULL	NULL

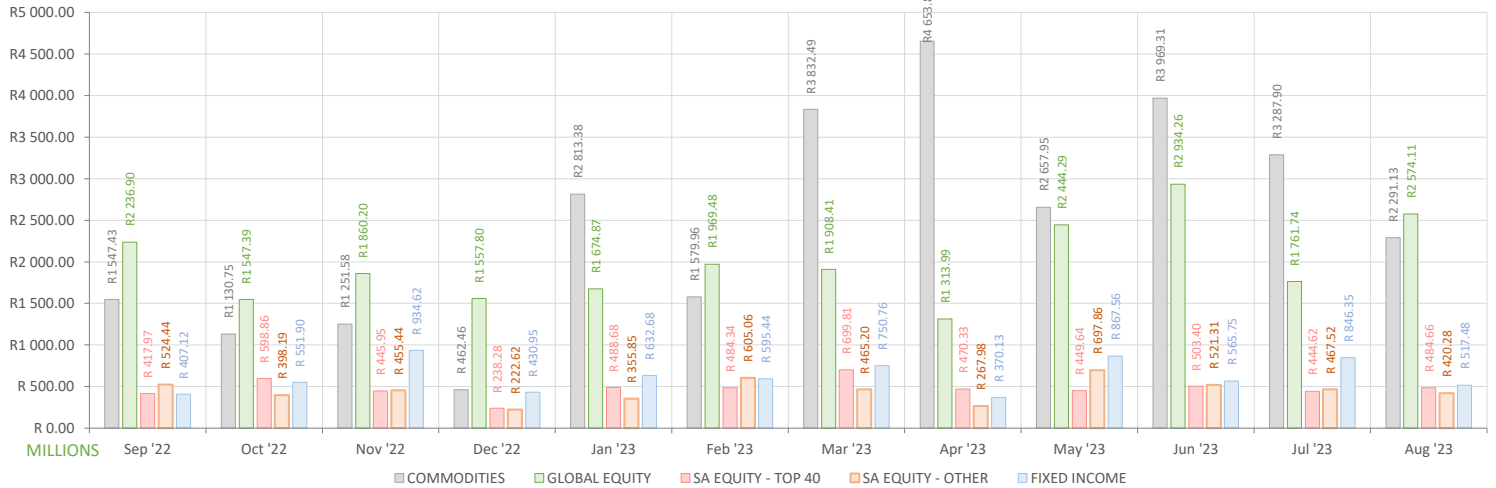
## ROLLING 12-MONTH ETF PERFORMANCE | Top & Bottom Five ETFs

TOP FIVE INSTRUMENTS	CODE	TOTAL RETURN	VOLATILITY	MAX DRAW DOWN
Sygnia Itrix Eurostoxx50	SYGEU	48.55%	19.60%	-9.68%
1Invest S&P500 IT ETF	ETF5IT	47.34%	27.06%	-13.70%
Satrix Nasdaq 100 Prtf	STXNDQ	38.60%	24.57%	-15.09%
AMI Big50 ex-SA ETF	AMIB50	30.05%	61.96%	-32.59%
Sygnia Itrix MSCI World	SYGWD	28.44%	19.07%	-8.73%

BOTTOM FIVE INSTRUMENTS	CODE	TOTAL RETURN	VOLATILITY	MAX DRAW DOWN
Satrix Shariah T40 ETF	STXSHA	-6.48%	15.01%	-23.31%
Satrix DIVI Plus Portfolio	STXDIV	-8.51%	17.58%	-26.89%
NewGold Palladium ETF	NGPLD	-34.99%	38.13%	-47.53%
1InvestPalladium ETF	ETFPLD	-35.06%	49.33%	-47.57%
1InvestRhodium ETF	ETFRHO	-67.22%	56.08%	-71.69%

Total Return is the monthly/annual performance incorporating price performance and immediate reinvestment of dividends. Volatility is the based on daily price standard deviation and presented as a monthly/annual volatility. Maximum draw down measures the worst case return outcome for an investor over the course of the period – based on purchase and subsequent sale timing that results in the largest loss of capital.

## MONTHLY VALUE TRADED FOR ALL ETFs



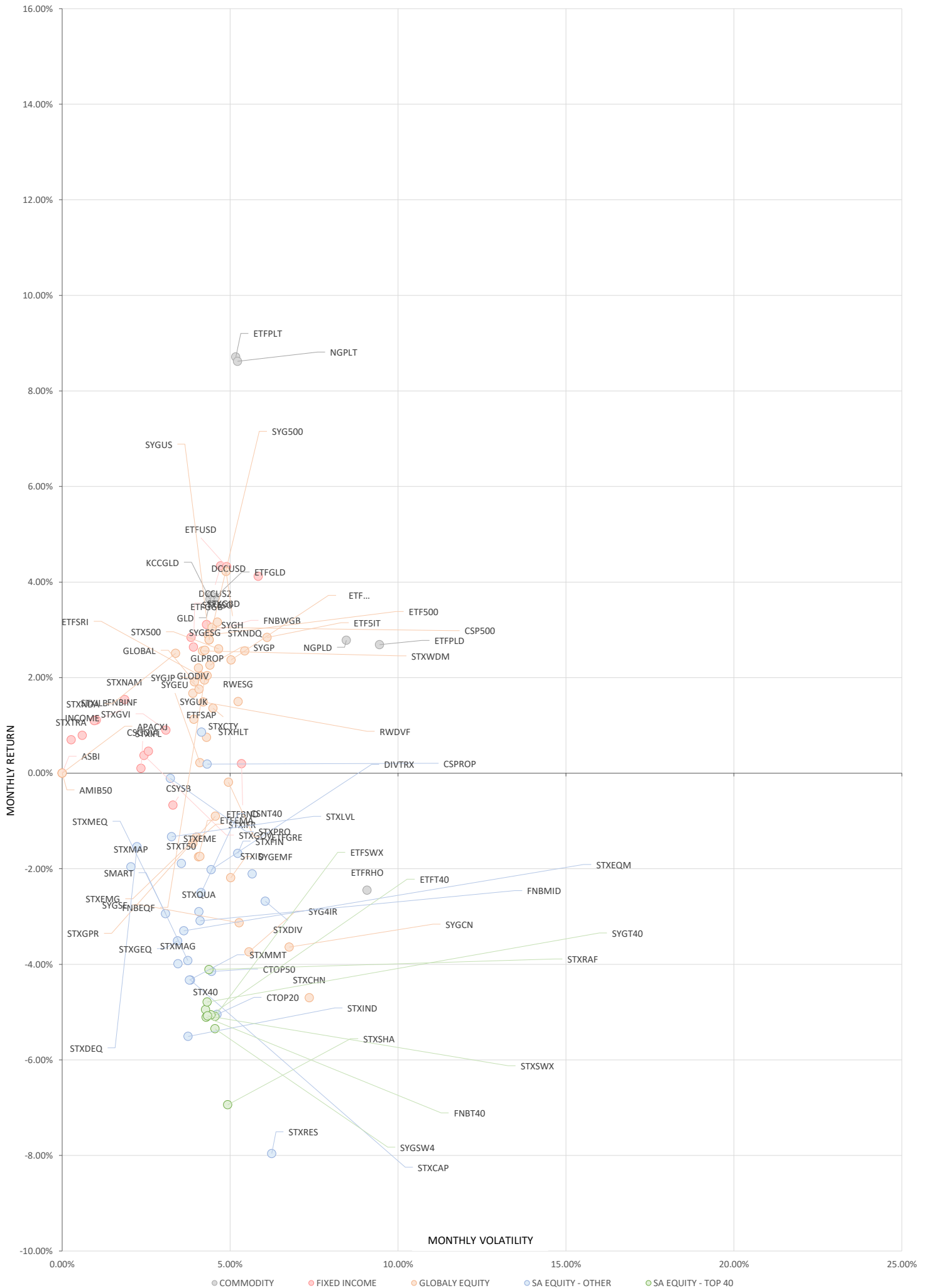
## MONTHLY ETF TRADE STATISTICS | Top & Bottom Five Funds

TOP FIVE INSTRUMENTS	CODE	VOLUME	VALUE	TRADES	LIQUIDITY
Satrix MSCI World Feeder	STXWDM	7757391	R615 908 917.10	2394	6.16%
Satrix MSCI China ETF	STXCHN	7015200	R268 779 956.00	1240	27.45%
FNB WORLD GOVBOND ETF	FNBWGB	11723374	R86 523 757.20	489	19.66%
Satrix SA Bond Portfolio	STXGOV	8603690	R68 622 874.45	612	7.62%
Satrix DIVI Plus Portfolio	STXDIV	22986093	R57 741 211.25	1233	3.46%

BOTTOM FIVE INSTRUMENTS	CODE	VOLUME	VALUE	TRADES	LIQUIDITY
KR Custodial Certificate	KCCGLD	106	R3 924 940.96	6	0.34%
1InvestRhodium ETF	ETFRHO	3076	R2 185 008.61	149	1.30%
2YR Dollar Custodial Cert	DCCUS2	383	R704 266.16	12	0.25%
Africa Sovereign Bond ETF	ASBI	NULL	NULL	NULL	NULL
AMI Big50 ex-SA ETF	AMIB50	NULL	NULL	NULL	NULL

Volume, Value and Trades are the aggregate counts of all trade activity in the ETF for the month on the JSE equity market. This includes central order book and reported trades, but excludes creations and redemptions. Liquidity is the total volume traded expressed as a percentage of the number of listed instruments for the ETF as at the end of the month.

# TOTAL RETURN VERSUS VOLATILITY



● COMMODITY ● FIXED INCOME ● GLOBALLY EQUITY ● SA EQUITY - OTHER ● SA EQUITY - TOP 40

# MONTHLY DETAILED ETF INFORMATION

## COMMODITIES

		Prices in Rands				Rands		Value in Mn's		In 000's	in Mn's	
ETF (SORTED ALPHABETICALLY)		START	LOW	HIGH	END	1M%	DISTRIBUTION	MCAP OPE	MCAP CLOSE	VOLUME	VALUE	TRADES
InvestGold ETF	ETFGLD	344.10	327.26	360.00	356.77	3.68	NULL	517.87	536.94	0.04	14.09	168
InvestPalladium ETF	ETFPD	216.20	209.50	241.31	222.02	2.69	NULL	474.57	487.35	1.30	282.28	67
InvestPlatinum ETF	ETFPPT	164.05	162.86	179.10	178.34	8.71	NULL	4374.72	4773.63	0.13	21.20	156
InvestRhodium ETF	ETFRHO	710.63	650.06	767.04	693.24	-2.45	NULL	165.86	163.54	0.00	2.19	149
KR Custodial Certificate	KCCGLD	36645.50	36593.00	38028.99	37978.00	3.64	NULL	1154.88	1196.88	0.00	3.92	6
New Gold Issuer Ltd	GLD	329.31	325.00	341.57	341.53	3.71	NULL	16095.99	16693.28	3.23	1,084.31	1625
New Gold Platinum ETF	NGPLT	162.77	162.16	177.30	176.80	8.62	NULL	7926.90	8327.28	4.67	789.34	821
NewGold Palladium ETF	NGPLD	216.88	218.00	242.82	222.90	2.78	NULL	222.24	206.11	0.19	42.77	179

## FIXED INCOME

		Prices in Rands				Rands		Value in Mn's		In 000's	in Mn's	
ETF (SORTED ALPHABETICALLY)		START	LOW	HIGH	END	1M%	DISTRIBUTION	MCAP OPE	MCAP CLOSE	VOLUME	VALUE	TRADES
Invest G7 Govt Bond ETF	ETFGGB	83.03	82.99	88.12	85.61	3.11	NULL	216.11	224.54	0.07	5.68	221
Invest SA Bond ETF	ETFBND	99.37	96.00	100.52	99.57	0.20	NULL	139.42	139.70	0.07	6.69	127
2YR Dollar Custodial Cert	DCCUS2	1794.60	1827.60	1898.29	1872.45	4.34	NULL	270.98	282.74	0.00	0.70	12
Africa Sovereign Bond ETF	ASBI	NULL	NULL	NULL	NULL	NULL	NULL	NULL	NULL	NULL	NULL	NULL
CoreShares GOVI	CSGOVI	10.10	9.88	10.24	10.11	0.10	NULL	1778.05	1810.14	6.54	65.90	717
CoreShares YSB	CSYSB	10.46	10.14	10.55	10.39	-0.67	NULL	289.63	324.06	1.62	16.81	262
CSI Actively Managed ETF	INCOME	10.13	10.10	10.24	10.21	0.79	NULL	585.19	630.65	3.12	31.82	183
Dollar Custodial Cert	DCCUSD	1693.55	1706.00	1785.68	1763.25	4.12	NULL	592.74	617.14	0.01	11.23	61
FNB GOV INF LNKD BND ETF	FNBNF	22.48	22.44	22.86	22.73	1.11	NULL	398.68	403.12	0.07	1.47	97
FNB WORLD GOVBOND ETF	FNBWGB	7.17	7.10	7.60	7.34	2.37	0.03	323.62	437.72	11.72	86.52	489
Satrix Global Bond ETF	STXGBD	39.33	38.91	41.37	40.37	2.64	NULL	339.07	348.04	0.19	7.55	186
Satrix GOVI ETF	STXGOVI	72.45	70.79	73.67	73.10	0.90	NULL	1964.42	1960.11	1.70	122.92	1426
Satrix ILBI ETF	STXIFL	84.28	83.60	88.00	84.67	0.46	NULL	87.65	79.59	0.05	4.52	76
Satrix ILBI Portfolio	STXILB	7.24	7.21	7.37	7.32	1.10	NULL	383.83	388.07	0.86	6.27	152
Satrix Namibia Bond ETF	STXNAM	19.52	19.23	19.94	19.82	1.54	NULL	456.81	469.78	0.42	8.21	103
Satrix SA Bond Portfolio	STXGOV	8.02	7.79	8.13	8.05	0.37	NULL	882.05	909.49	8.60	68.62	612
Satrix TRACI 3 Month ETF	STXTRA	31.23	31.16	31.51	31.45	0.70	NULL	183.40	190.99	0.65	20.29	182

## GLOBAL EQUITY

		Prices in Rands				Rands		Value in Mn's		In 000's	in Mn's	
ETF (SORTED ALPHABETICALLY)		START	LOW	HIGH	END	1M%	DISTRIBUTION	MCAP OPE	MCAP CLOSE	VOLUME	VALUE	TRADES
Invest Global REIT ETF	ETFGRE	21.50	20.00	22.50	21.46	-0.19	NULL	50.08	49.99	0.10	2.17	169
Invest MSCI World ETF	ETFWLD	78.22	76.50	80.60	80.07	2.37	NULL	311.86	341.46	0.17	13.70	176
Invest MSCI world SRI ETF	ETFSRI	149.99	147.60	155.69	153.04	2.03	NULL	26.53	27.07	0.01	1.67	40
Invest S&P500 Index ETF	ETF500	430.91	410.22	449.00	443.36	2.89	NULL	200.55	210.56	0.02	7.82	283
Invest S&P500 IT ETF	ETF5IT	20.76	19.83	21.44	21.35	2.84	NULL	743.92	774.33	0.90	18.38	658
AMI Big50 ex-SA ETF	AMIB50	NULL	NULL	NULL	NULL	NULL	NULL	NULL	NULL	NULL	NULL	NULL
CoreShares Global Prop	GLPROP	42.66	40.85	43.82	43.53	2.04	NULL	442.55	451.57	0.36	15.41	300
CoreShares GlobalDivTrax	GLODIV	19.12	18.70	19.85	19.44	1.67	NULL	1421.03	1444.82	1.73	33.44	529
CoreShares S&P 500	CSP500	83.86	82.31	86.90	86.42	3.05	NULL	1933.84	1992.87	0.18	15.55	1008
CoreShares TotalWldStock	GLOBAL	13.11	12.82	13.59	13.36	1.91	NULL	999.32	1045.10	4.47	58.79	588
CSA Actively Managed ETF	APACKJ	10.30	9.51	10.19	9.85	-4.37	NULL	0.01	647.57	14.73	144.80	753
FNB GLOBAL 1200 FOF ETF	FNBEQF	79.68	77.30	82.24	80.88	1.51	0.34	1674.08	1723.55	0.90	71.50	542
Reitway DV Property ETF	RWDVF	10.08	9.81	10.31	10.23	1.49	NULL	59.47	60.36	0.01	0.07	6
Reitway ESG Property ETF	RWESG	9.98	9.76	10.21	10.13	1.50	NULL	58.88	59.77	0.00	0.02	4
Satrix Global IFR ETF	STXIFR	55.87	53.44	57.26	55.05	-1.47	NULL	242.99	255.94	0.32	17.73	194
Satrix Healthcare Inn ETF	STXHIL	69.08	66.41	70.92	69.60	0.75	NULL	53.66	54.07	0.03	2.31	80
Satrix MSCI China ETF	STXCHN	41.50	37.37	42.88	39.55	-4.70	NULL	1309.60	1010.76	7.02	268.78	1240
Satrix MSCI EM ESG ETF	STXEME	49.35	46.80	50.20	48.49	-1.74	NULL	143.33	140.84	0.05	2.56	73
Satrix MSCI EMG Markets	STXEMG	57.64	54.70	59.30	56.87	-1.34	NULL	2350.14	2313.06	1.69	94.90	1425
Satrix MSCI India ETF	STXNDA	70.14	70.09	74.37	71.90	2.51	NULL	251.92	265.43	0.23	16.43	286
Satrix MSCI World ESG ETF	STXESG	67.65	66.43	70.62	69.79	3.16	NULL	203.51	209.94	0.14	9.31	133
Satrix MSCI World Feeder	STXWDM	78.41	76.00	81.50	80.42	2.56	NULL	9184.61	10127.74	7.76	615.91	2394
Satrix Nasdaq 100 Prtf	STXNDQ	161.90	156.04	167.00	166.04	2.56	NULL	4018.51	4171.08	0.92	148.94	1709
Satrix Reitway Gbl Prop	STXGPR	69.92	66.17	71.97	69.29	-0.90	NULL	56.98	56.47	0.01	0.58	25
Satrix S&P 500 Feeder	STX500	86.82	84.36	91.44	89.08	2.60	NULL	4173.79	4362.61	1.58	137.89	1792
Satrix Smart City Inf ETF	STXCTY	61.83	60.43	64.07	62.67	1.36	NULL	18.24	18.49	0.01	0.89	42
Sygnia Itrix 4Ind Rev Gb	SYG4IR	45.13	40.25	45.57	43.44	-3.74	NULL	2178.36	2096.78	0.72	31.05	770
Sygnia Itrix Eurostoxx50	SYGEU	87.63	84.82	90.10	87.82	0.22	NULL	2964.11	2991.46	0.62	54.20	1192
Sygnia Itrix FTSE100	SYGUK	176.50	171.20	182.76	178.49	1.13	NULL	1324.11	1339.04	0.07	12.58	348
Sygnia Itrix Gbl Pro ETF	SYGP	44.25	43.09	45.50	45.25	2.26	NULL	531.90	543.92	0.08	3.36	174
Sygnia Itrix MSCI EM 50	SYGEMF	16.42	15.37	16.47	16.06	-2.19	NULL	2335.51	1934.70	0.48	7.77	132
Sygnia Itrix MSCI Japan	SYGJP	18.23	17.76	18.79	18.55	1.76	NULL	1057.02	1075.58	0.88	15.98	415
Sygnia Itrix MSCI US	SYGUS	77.78	76.24	80.77	79.95	2.79	NULL	6776.51	6965.56	0.80	62.58	1615

## MONTHLY DETAILED ETF INFORMATION

### GLOBAL EQUITY

ETF (SORTED ALPHABETICALLY)		Prices in Rands				1M%	DISTRIBUTION	Value in Mn's		In 000's	in Mn's	TRADES
		START	LOW	HIGH	END			MCAP OPE	MCAP CLOSE			
Sygnia Itrix MSCI World	SYGWD	55.82	54.51	57.99	57.05	2.20	NULL	13758.51	14613.47	2.16	120.93	1687
Sygnia Itrix New China Sectors ETF	SYGCN	32.70	29.99	33.38	31.51	-3.64	NULL	268.02	155.29	0.49	15.77	156
Sygnia Itrix S&P 500 ETF	SYG500	84.23	82.51	87.33	86.58	2.79	NULL	4497.14	4665.90	0.84	70.84	909
Sygnia Itrix SOL H150	SYGH	29.83	29.85	31.82	31.09	4.22	NULL	485.29	505.79	0.30	9.31	223
Sygnia Itrix SP Glob ESG	SYGESG	46.25	45.07	47.61	47.44	2.57	NULL	1503.67	1542.36	2.41	113.68	125
Sygnia Itrix SUS Economy	SYGSE	59.17	54.95	59.18	57.32	-3.13	NULL	184.71	177.39	0.07	4.04	116

### SA EQUITY | OTHER

ETF (SORTED ALPHABETICALLY)		Prices in Rands				1M%	DISTRIBUTION	Value in Mn's		In 000's	in Mn's	TRADES
		START	LOW	HIGH	END			MCAP OPE	MCAP CLOSE			
Invest SA Property ETF	ETFSAP	30.39	30.04	32.00	30.65	0.86	NULL	479.95	496.01	0.66	20.71	1252
CoreShares DivTrax	DIVTRX	21.27	19.88	21.27	20.84	-2.02	NULL	135.39	132.66	0.79	16.25	222
CoreShares Next 40	CSNT40	10.02	9.51	10.02	9.77	-2.50	NULL	146.44	157.44	1.68	16.38	157
CoreShares S&P500	CSPROP	10.36	10.23	10.80	10.38	0.19	NULL	423.41	424.23	1.05	10.97	338
CoreShares SciBeta M-FI	SMART	53.10	50.13	53.07	51.02	-3.92	NULL	114.61	110.12	0.03	1.32	54
CoreShares Health Top 20	CTOP20	10.09	9.38	10.00	9.58	-5.05	NULL	176.59	186.82	2.26	21.54	190
CORESHARESTOP50	CTOP50	31.54	29.29	31.30	30.23	-4.15	NULL	1380.44	1380.52	0.81	24.62	252
FNB MIDCAP ETF	FNB MID	7.76	7.30	8.05	7.52	-3.09	NULL	599.48	568.15	3.04	23.22	380
Satrix Capped ALL Share	STXCAP	39.30	36.51	39.50	37.60	-4.33	NULL	258.57	251.15	0.17	6.28	130
Satrix Defensive Eq ETF	STXDEQ	10.42	10.15	10.35	10.26	-1.54	NULL	7.49	7.38	0.00	0.05	11
Satrix DIVI Plus Portfolio	STXDIV	2.61	2.41	2.63	2.54	-2.68	NULL	1694.91	1685.01	22.99	57.74	1233
Satrix Eq Momentum ETF	STXEQM	43.08	40.50	43.52	41.66	-3.30	NULL	196.76	190.27	0.04	1.61	85
Satrix FINI Portfolio	STXFIN	17.31	16.46	17.60	17.02	-1.68	NULL	1137.91	1132.46	1.99	34.10	511
Satrix GIVI Top 50 ETF	STXT50	49.84	47.59	50.02	48.90	-1.89	NULL	59.47	58.35	0.10	4.85	60
Satrix High Grwt Eq ETF	STXGEQ	10.54	9.95	10.56	10.17	-3.51	NULL	14.26	13.76	0.02	0.20	32
Satrix I & D ETF	STXID	30.76	29.27	30.67	30.11	-2.11	NULL	16.64	16.29	0.02	0.56	27
Satrix INDI Portfolio	STXIND	107.59	100.50	109.99	101.66	-5.51	NULL	2306.56	2174.35	0.37	37.72	589
Satrix Low Vol ETF	STXLVL	10.49	10.09	10.53	10.35	-1.33	NULL	129.57	127.85	0.05	0.53	39
Satrix MAPPS Growth ETF	STXMAG	29.54	27.56	29.67	28.36	-3.99	NULL	34.56	33.18	0.01	0.32	44
Satrix MAPPS Protect ETF	STXMAP	49.48	47.68	49.85	48.51	-1.96	NULL	45.63	39.89	0.01	0.73	49
Satrix Moderate Eq ETF	STXMEQ	10.90	10.28	10.87	10.58	-2.94	NULL	9.65	9.37	0.01	0.05	14
Satrix Momentum Portfolio	STXMMT	12.70	11.75	12.69	12.15	-4.33	NULL	35.66	34.11	0.09	1.11	84
Satrix Property Portfolio	STXPRO	8.80	8.59	9.14	8.79	-0.11	NULL	317.43	312.67	2.46	21.75	340
Satrix Quality SA Port	STXQUA	7.59	7.10	7.62	7.37	-2.90	NULL	54.17	52.60	0.23	1.71	68
Satrix RESI Portfolio	STXRES	64.91	56.65	65.00	59.74	-7.96	NULL	985.85	949.15	1.35	80.94	1159
Satrix Value Equity ETF	STXVEQ	13.40	12.78	13.59	13.14	-1.94	NULL	305.57	299.64	1.49	19.57	106

### SA EQUITY | TOP 40

ETF (SORTED ALPHABETICALLY)		Prices in Rands				1M%	DISTRIBUTION	Value in Mn's		In 000's	in Mn's	TRADES
		START	LOW	HIGH	END			MCAP OPE	MCAP CLOSE			
Invest SWIX 40 ETF	ETFSWX	13.56	12.55	13.50	12.87	-5.09	NULL	1641.68	1578.74	0.05	0.59	67
Invest TOP 40 ETF	ETFT40	73.32	67.50	72.63	69.61	-5.06	NULL	647.95	614.33	0.02	1.23	133
FNB TOP 40 ETF	FNB T40	73.39	66.30	77.02	69.64	-5.11	NULL	2550.43	2468.86	1.07	74.27	534
Satrix 40 Portfolio	STX40	73.26	67.66	74.00	69.63	-4.95	NULL	13816.25	13256.99	4.03	282.75	2929
Satrix RAFI 40 Portfolio	STXRAF	23.20	21.20	23.35	22.23	-4.18	0.02	1347.39	1291.06	1.82	40.37	312
Satrix Shariah T40 ETF	STXSHA	3.89	3.53	3.86	3.62	-6.94	NULL	48.08	44.74	0.22	0.79	102
Satrix SWIX Top 40 Portfolio	STXSWX	13.57	12.52	13.51	12.88	-5.08	NULL	427.70	405.95	0.37	4.76	210
Sygnia Itrix SWIX40 ETF	SYGSW4	13.46	12.52	13.37	12.74	-5.35	NULL	186.99	176.98	0.50	6.44	49
Sygnia Itrix Top 40 ETF	SYGT40	72.90	67.70	72.58	69.41	-4.79	NULL	461.08	412.13	0.14	10.14	107

The information, data and compilations, or any part thereof, which make up the JSE ETF Factsheet ("Data") is being provided to you strictly for informational purposes. JSE Limited ("JSE") reserves the right to withdraw, modify, or replace the Data (or any part thereof) at any time.

To the extent allowed by law, JSE does not (expressly, tacitly or impliedly) guarantee or warrant the availability, sequence, accuracy, completeness, reliability or any other aspect of any of the Data or that the Data contained therein is up to date. To the extent allowed by law, neither the JSE nor any of its directors, officers, employees, contractors, agents or representatives are liable to any way to the reader/user or to any other natural or juristic person (Person) for any loss or damage as a result of any errors contained in the specification, for any loss arising from use of, or reliance on the Data in this JSE ETF Factsheet or any actions taken or not taken by or behalf of any Person in reliance on any Data in this JSE ETF Factsheet. You may not copy, reproduce, redistribute, alter or transmit any Data without the prior written consent of the JSE.

**The Johannesburg Stock Exchange** prides itself on a 130 year history as an effective, reputable trading platform. We are currently ranked the 19th largest stock exchange in the world based on market capitalization, and the largest exchange on the African continent. The JSE offers secure and efficient primary and secondary capital markets across a diverse range of asset classes which include equities, commodities, currencies, interest rates and bonds. We are the exchange of choice for local and international investors looking for investment opportunities across leading capital markets in South Africa and the broader African continent.

The JSE's achievements escalate through to this year's 20th anniversary of the first ETF listing on the local Exchange Traded Fund (ETF) market. Today, the ETF market capitalization is close to R90bn with over 70 listed ETFs on the JSE Main Board.

**Our Primary Markets Team** is a key access point for existing and/or potential issuers to gain exposure to local and international investor capital. The team focuses on listing companies and instruments on the Equity (Main Board and AltX) or Debt Market and aids in product development.

Contact the team: [listingontheJSE@jse.co.za](mailto:listingontheJSE@jse.co.za)

**Our Information Services Team** works to deliver world class market data to our clients. This data can often be customized on request providing our clients with the exact Intel required to make business and portfolios decisions.

We offer live, delayed, end of day, reference and historical market data for:

- Equities
- Indices
- Equity Derivatives
- Commodity Derivatives
- Commodity Derivatives
- Currency Derivatives
- Interest Rate Derivatives
- Bonds
- Market Announcements (SENS)

We have nearly 170 indices across a wide variety of methodologies and investment criteria.

Our partnership with FTSE Russell includes:

- FTSE/JSE All Share
- FTSE/JSE Top 40
- FTSE/JSE ESG
- FTSE/JSE Factor Indices
- FTSE/JSE Shariah
- FTSE/JSE RAFI and many more

We develop customised indices to suit your needs.

- Our other service offerings include:
- Bond ETP data
- Tick data
- Corporate Actions
- Business Intelligence Reports
- Valuations

Contact the team: [mdclients@jse.co.za](mailto:mdclients@jse.co.za)