

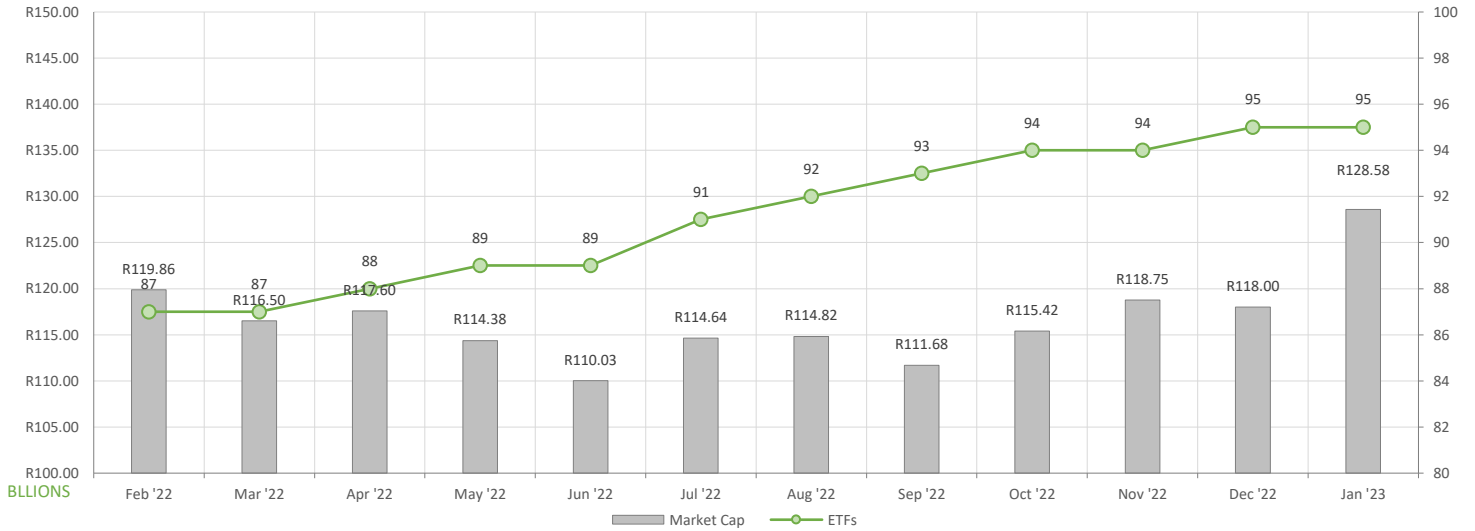
January showed increased ETF activity compared to December, here is what we have seen:

- ETF Market Capitalization showed a month-on-month increase of 9%. ETF unit creations were largely reflected in the commodity ETFs and global equity ETFs.
- Month-on-month ETF value traded was higher compared to December's activity, reflecting almost R6bn in total value traded during the month.
- Month-on-Month ETF returns showed largely positive performances across local and global equity ETFs.

## NEW LISTINGS & DELISTINGS

ETF	CODE	ISSUER	EVENT	DATE
---	---	---	---	---

## MARKET CAPITALISATION ANALYSIS | Total Industry



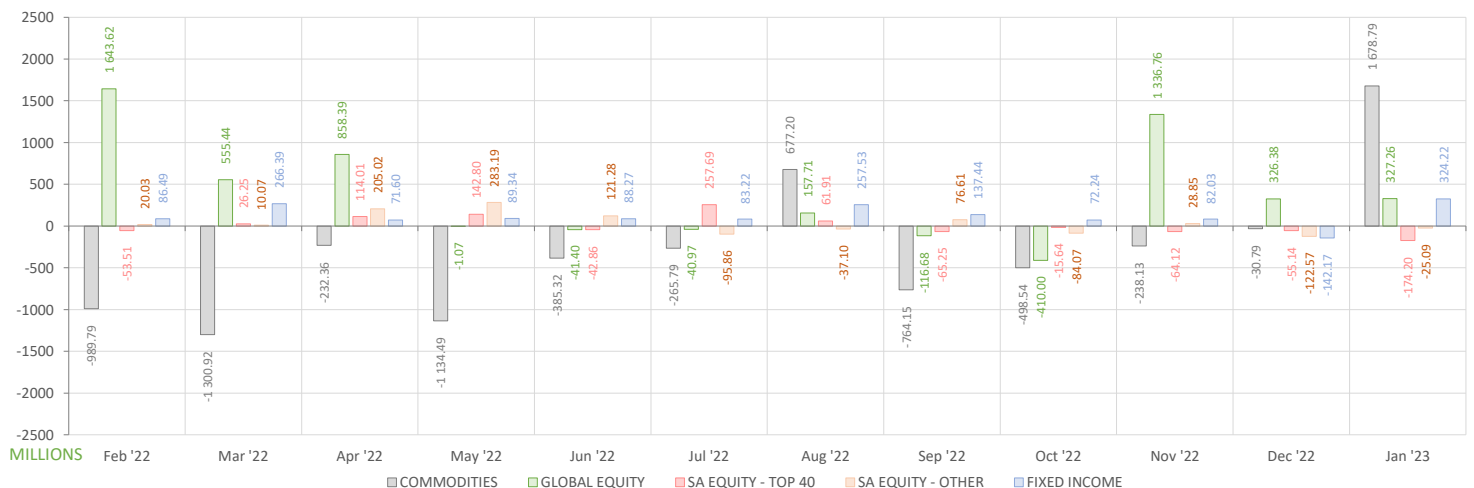
## NET DAILY EXCHANGE CREATION & REDEMPTIONS | Top & Bottom Five ETFs

TOP FIVE INSTRUMENTS	CODE	TOTAL DAILY CREATIONS	TOTAL DAILY REDEMPTIONS	NET MONTHLY CREATIONS
New Gold Issuer Ltd	GLD	R677 334 000.00	---	R677 334 000.00
1InvestPlatinum ETF	ETFPLT	R604 663 000.00	---	R604 663 000.00
New Gold Platinum ETF	NGPLT	R391 157 500.00	---	R391 157 500.00
Dollar Custodial Cert	DCCUSD	R245 764 500.00	---	R245 764 500.00
Satrix MSCI World Feeder	STXWDM	R102 263 000.00	---	R102 263 000.00

BOTTOM FIVE INSTRUMENTS	CODE	TOTAL DAILY CREATIONS	TOTAL DAILY REDEMPTIONS	NET MONTHLY CREATIONS
CoreShares DivTrax	DIVTRX	---	-R28 716 000.00	-R28 716 000.00
FNB TOP 40 ETF	FNBT40	R43 068 000.00	-R73 478 000.00	-R30 410 000.00
Sygnia Itrix MSCI US	SYGUS	---	-R32 120 000.00	-R32 120 000.00
CoreShares Global Prop	GLPROP	---	-R38 655 000.00	-R38 655 000.00
Satrix 40 Portfolio	STX40	---	-R143 794 000.00	-R143 794 000.00

Considers the daily update to total number of issued units listed on the exchange over the calendar month, with Creations representing a day-on-day increase in total number of listed units, and Redemptions representing a decrease. An average day-on-day price is used to estimate the ZAR value of each net daily movement. No secondary market transactions are considered.

## NET MONTHLY EXCHANGE CREATIONS & REDEMPTIONS



## MONTHLY ETF PERFORMANCE | Top & Bottom Five ETFs

TOP FIVE INSTRUMENTS	CODE	TOTAL RETURN	VOLATILITY	MAX DRAW DOWN
Sygnia Itrix MSCI EM 50	SYGEMF	15.30%	5.07%	-2.25%
Satrix MSCI China ETF	STXCHN	14.05%	7.01%	-3.54%
Sygnia Itrix SUS Economy	SYGSE	13.70%	6.43%	-3.49%
Sygnia Itrix New China Sectors ETF	SYGCN	13.46%	6.30%	-3.20%
Sygnia Itrix 4Ind Rev Gb	SYG4IR	13.44%	6.55%	-3.15%

BOTTOM FIVE INSTRUMENTS	CODE	TOTAL RETURN	VOLATILITY	MAX DRAW DOWN
New Gold Platinum ETF	NGPLT	-2.71%	7.05%	-6.21%
NewGold Palladium ETF	NGPLD	-7.81%	9.77%	-8.87%
1InvestPalladium ETF	ETFPLD	-7.94%	10.33%	-8.81%
AMI Big50 ex-SA ETF	AMIB50	-13.17%	17.85%	-17.01%
Africa Sovereign Bond ETF	ASBI	NULL	NULL	NULL

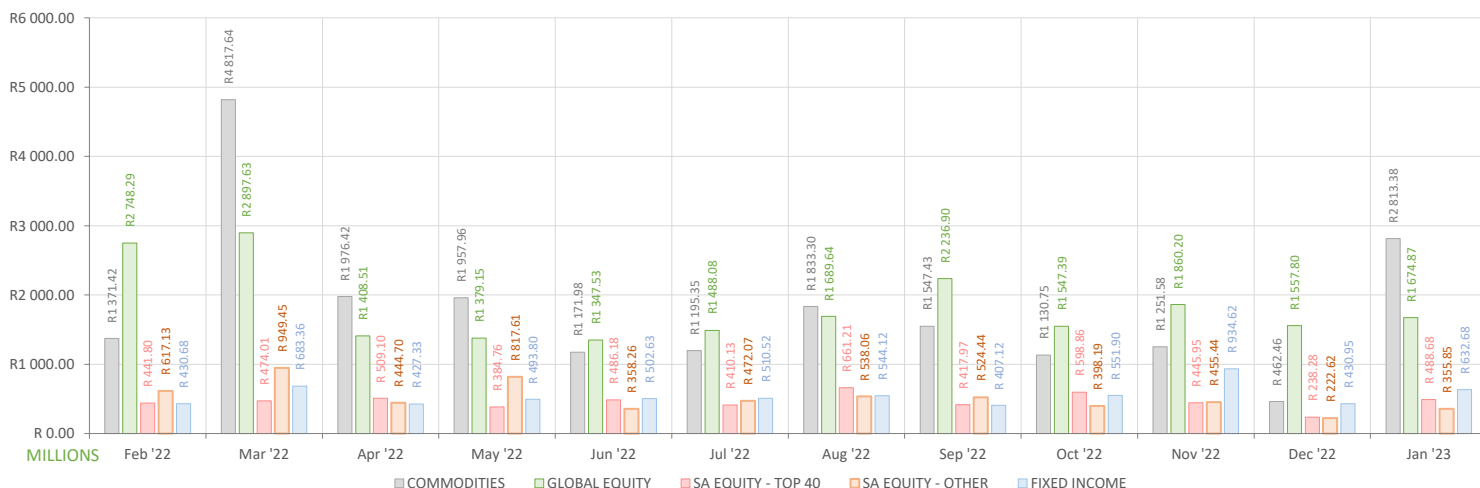
## ROLLING 12-MONTH ETF PERFORMANCE | Top & Bottom Five ETFs

TOP FIVE INSTRUMENTS	CODE	TOTAL RETURN	VOLATILITY	MAX DRAW DOWN
1Invest SA Bond ETF	ETFBND	31.32%	56.45%	-27.98%
Sygnia Itrix New China Sectors ETF	SYGCN	24.62%	26.26%	-29.40%
NewFunds S&P GIVI SA T50	GIVISA	22.39%	22.98%	-12.02%
NF Equity Value ETF	NFEVAL	21.59%	20.21%	-14.82%
NFNAM 10 Bonds	NFNAMB	20.79%	10.94%	-4.96%

BOTTOM FIVE INSTRUMENTS	CODE	TOTAL RETURN	VOLATILITY	MAX DRAW DOWN
AMI Big50 ex-SA ETF	AMIB50	-13.04%	108.22%	-40.46%
1InvestRhodium ETF	ETFRHO	-23.76%	42.93%	-45.35%
NewGold Palladium ETF	NGPLD	-25.27%	51.77%	-40.69%
1InvestPalladium ETF	ETFPLD	-25.79%	51.43%	-40.42%
Africa Sovereign Bond ETF	ASBI	-31.54%	102.75%	-47.79%

Total Return is the monthly/annual performance incorporating price performance and immediate reinvestment of dividends. Volatility is the based on daily price standard deviation and presented as a monthly/annual volatility. Maximum draw down measures the worst case return outcome for an investor over the course of the period – based on purchase and subsequent sale timing that results in the largest loss of capital.

## MONTHLY VALUE TRADED FOR ALL ETFs



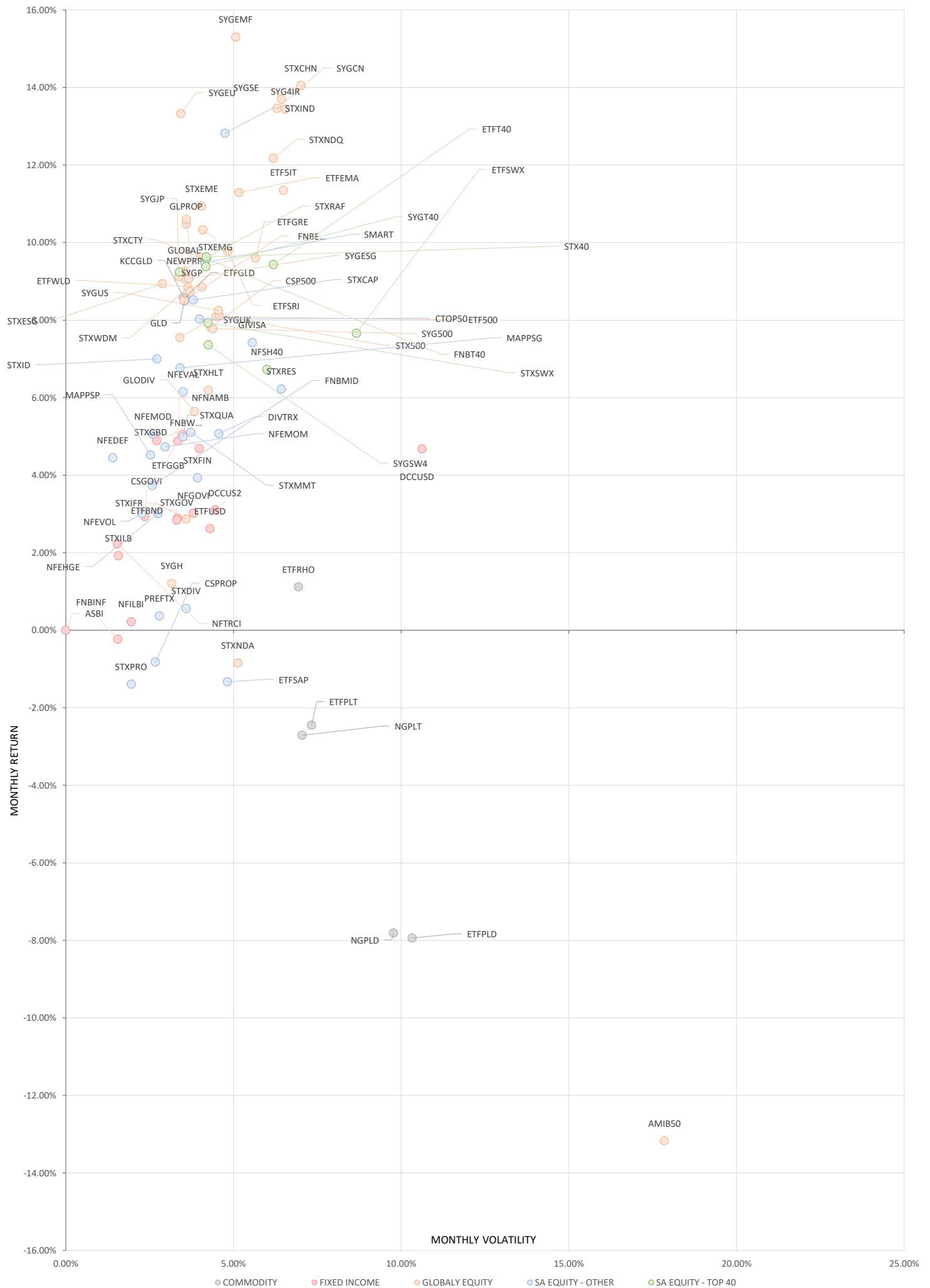
## MONTHLY ETF TRADE STATISTICS | Top & Bottom Five Funds

TOP FIVE INSTRUMENTS	CODE	VOLUME	VALUE	TRADES	LIQUIDITY
New Gold Issuer Ltd	GLD	5009415	R1 536 508 734.00	1840	8.60%
Sygnia Itrix MSCI World	SYGWD	6075822	R285 288 075.90	1066	2.41%
Sygnia Itrix MSCI EM 50	SYGEMF	9019817	R140 813 488.00	206	5.65%
Satrix DIVI Plus Portfolio	STXDIV	25687524	R82 754 055.28	1240	3.55%
Satrix SA Bond Portfolio	STXGOV	5733523	R47 969 903.52	1055	6.83%

BOTTOM FIVE INSTRUMENTS	CODE	VOLUME	VALUE	TRADES	LIQUIDITY
KR Custodial Certificate	KCCGLD	182	R6 034 381.16	19	0.58%
2YR Dollar Custodial Cert	DCCUS2	911	R1 496 287.97	15	0.60%
1Invest MSCI world SRI ETF	ETFSLR	917	R112 787.38	25	0.47%
NF VM Moderate Equity ETF	NFEMOD	5098	R53 456.84	17	0.09%
Africa Sovereign Bond ETF	ASBI	NULL	NULL	NULL	NULL

Volume, Value and Trades are the aggregate counts of all trade activity in the ETF for the month on the JSE equity market. This includes central order book and reported trades, but excludes creations and redemptions. Liquidity is the total volume traded expressed as a percentage of the number of listed instruments for the ETF as at the end of the month.

# TOTAL RETURN VERSUS VOLATILITY



# MONTHLY DETAILED ETF INFORMATION

## COMMODITIES

		Prices in Rands				Rands		Value in Mn's		In 000's	in Mn's	
ETF (SORTED ALPHABETICALLY)		START	LOW	HIGH	END	1M%	DISTRIBUTION	MCAP OPE	MCAP CLOSE	VOLUME	VALUE	TRADES
1InvestGold ETF	ETFGLD	305.36	303.99	328.82	326.39	6.89	NULL	444.30	474.90	0.08	23.56	159
1InvestPalladium ETF	ETFPD	294.69	225.15	303.10	270.63	-8.16	NULL	136.75	125.59	0.03	8.30	255
1InvestPlatinum ETF	ETFPPL	178.64	167.76	201.00	170.04	-4.81	NULL	2023.10	2529.34	3.63	634.73	123
1InvestRhodium ETF	ETFRHO	1835.00	1742.00	1999.99	1893.01	3.16	NULL	298.93	314.06	0.01	17.40	216
KR Custodial Certificate	KCCGLD	32099.00	32700.00	34341.00	34312.50	6.90	NULL	1011.60	1081.36	0.00	4.56	17
New Gold Issuer Ltd	GLD	292.16	290.32	312.69	312.27	6.88	NULL	16383.73	18198.45	4.68	1,441.53	1472
New Gold Platinum ETF	NGPLT	177.72	167.18	179.97	168.48	-5.20	NULL	6504.55	6553.87	3.35	580.81	390
NewGold Palladium ETF	NGPLD	294.64	271.06	300.57	271.77	-7.76	NULL	301.92	278.48	0.02	4.93	71

## FIXED INCOME

		Prices in Rands				Rands		Value in Mn's		In 000's	in Mn's	
ETF (SORTED ALPHABETICALLY)		START	LOW	HIGH	END	1M%	DISTRIBUTION	MCAP OPE	MCAP CLOSE	VOLUME	VALUE	TRADES
1Invest G7 Govt Bond ETF	ETFGGB	78.08	77.17	83.00	81.74	4.69	NULL	30.41	31.83	0.01	0.76	66
1Invest SA Bond ETF	ETFBND	103.49	98.00	108.00	103.72	0.22	1.97	134.85	135.15	0.06	6.58	145
1Invest US Short-Date ETF	ETFUSD	17.12	16.50	17.95	17.63	2.98	NULL	62.59	70.80	0.05	0.94	65
2YR Dollar Custodial Cert	DCCUS2	1633.20	1636.60	1700.69	1688.35	3.38	NULL	246.61	254.94	0.00	1.45	12
Africa Sovereign Bond ETF	ASBI	NULL	NULL	NULL	NULL	NULL	NULL	NULL	NULL	NULL	NULL	NULL
CoreShares GOVI	CSGOVI	10.37	10.32	10.76	10.55	1.74	0.07	861.88	921.68	4.94	52.37	272
Dollar Custodial Cert	DCCUSD	1572.80	1579.20	1706.40	1647.80	4.77	NULL	212.33	469.62	0.18	297.11	3275
FNB GOV INF LNKD BND ETF	FNBNF	22.73	22.27	23.62	22.46	-1.19	0.11	403.12	398.33	0.39	8.96	108
FNB WORLD GOVBOND ETF	FNWBGB	6.76	6.60	7.40	7.08	4.73	NULL	196.95	220.43	4.30	29.71	276
NEWFUNDS GOVI ETF	NFGOVI	77.14	76.51	80.17	76.68	-0.60	2.23	2720.55	2704.33	1.83	142.81	1134
NEWFUNDS ILBI ETF	NFILBI	83.94	82.62	85.00	83.16	-0.93	0.21	117.52	116.42	0.04	3.46	73
NEWFUNDS TRACI 3-M ETF	NFTRCI	30.13	30.03	30.40	30.30	0.56	0.46	250.58	252.00	0.20	6.01	156
NFNAM 10 Bonds	NFNAMB	17.92	17.91	18.44	18.26	1.90	0.44	366.15	373.09	0.08	1.45	36
Satrix Global Bond ETF	STXGBD	36.81	36.27	40.32	38.39	4.29	NULL	162.74	173.57	0.19	7.07	105
Satrix ILBI Portfolio	STXILB	7.14	7.00	7.27	7.13	-0.14	0.13	528.47	520.60	2.94	20.90	210

## GLOBAL EQUITY

		Prices in Rands				Rands		Value in Mn's		In 000's	in Mn's	
ETF (SORTED ALPHABETICALLY)		START	LOW	HIGH	END	1M%	DISTRIBUTION	MCAP OPE	MCAP CLOSE	VOLUME	VALUE	TRADES
1Invest Global REIT ETF	ETFGRE	19.43	18.99	22.05	21.35	9.88	NULL	47.20	51.87	0.13	2.57	175
1Invest MSCI EM Asia ETF	ETFEMA	25.59	25.64	29.75	28.30	10.59	NULL	24.31	30.00	0.13	3.61	99
1Invest MSCI World ETF	ETFWLD	62.16	61.50	68.20	67.26	8.20	NULL	102.19	110.57	0.02	1.60	85
1Invest MSCI world SRI ETF	ETFSRI	117.77	116.62	129.82	129.46	9.93	NULL	22.89	25.17	0.00	0.10	22
1Invest S&P500 Index ETF	ETF500	336.55	330.20	368.00	361.52	7.42	NULL	117.77	129.21	0.02	5.66	168
1Invest S&P500 IT ETF	ETF5IT	13.25	12.81	14.90	14.62	10.34	NULL	460.49	510.06	0.65	8.99	448
AMI Big50 ex-SA ETF	AMIB50	7.00	6.05	7.50	6.20	-11.43	NULL	5.61	4.97	0.03	0.23	158
CoreShares Global Prop	GLPROP	38.76	38.19	42.76	42.59	9.88	NULL	505.28	555.21	0.33	13.32	307
CoreShares GlobalDivTrax	GLDIV	16.63	16.57	17.54	17.41	4.69	0.18	1116.24	1182.52	1.88	32.48	491
CoreShares S&P 500	CSP500	65.85	64.94	70.92	70.81	7.53	NULL	1505.35	1618.74	0.30	20.20	576
CoreShares TotalWldStock	GLOBAL	10.65	10.53	11.74	11.57	8.64	NULL	373.00	416.79	1.13	12.59	324
FNB GLOBAL 1200 FOF ETF	FNBEQF	64.11	61.50	69.68	69.37	8.20	NULL	1439.91	1558.05	0.30	19.78	361
NewFunds Reitway Global Property ETF	NEWPRP	68.21	67.61	73.64	73.24	7.37	0.64	104.45	112.16	0.01	0.99	27
Satrix Global IFR ETF	STXIFR	52.77	52.03	56.50	54.30	2.90	0.26	208.40	230.73	0.28	14.97	157
Satrix Healthcare Inn ETF	STXHLT	62.43	61.05	67.79	66.04	5.78	NULL	42.25	44.70	0.02	1.34	90
Satrix MSCI China ETF	STXCHN	39.23	39.00	46.27	43.51	10.91	NULL	1194.81	1325.17	1.23	52.71	1245
Satrix MSCI EM ESG ETF	STXEME	42.51	42.09	48.79	46.73	9.93	NULL	110.71	121.71	0.03	1.59	92
Satrix MSCI EMG Markets	STXEMG	49.07	48.53	55.44	53.71	9.46	NULL	1853.51	2044.89	0.93	48.55	597
Satrix MSCI India ETF	STXNDA	61.45	59.05	63.99	60.61	-1.37	NULL	189.98	193.45	0.23	14.36	347
Satrix MSCI World ESG ETF	STXESG	54.57	53.50	59.97	59.24	8.56	NULL	169.62	184.13	0.18	10.33	114
Satrix MSCI World Feeder	STXWDM	62.72	61.58	69.00	67.75	8.02	NULL	5747.39	6303.16	2.72	178.59	1242
Satrix Nasdaq 100 Prtf	STXNDQ	106.36	104.02	118.50	118.01	10.95	NULL	2576.14	2870.11	0.78	87.25	1396
Satrix S&P 500 Feeder	STX500	67.81	65.12	74.00	72.89	7.49	NULL	3036.13	3292.74	1.31	92.01	1277
Satrix Smart City Inf ETF	STXCTY	50.30	50.79	56.50	54.76	8.87	NULL	19.87	21.63	0.12	6.40	30
Sygnia Itrix 4Ird Rev Gb	SYG4IR	36.11	35.54	40.40	40.20	11.33	0.08	2003.62	2230.56	1.53	59.69	655
Sygnia Itrix Eurostoxx50	SYGEU	69.59	69.18	78.50	78.00	12.09	0.09	2884.72	3233.34	1.05	79.70	861
Sygnia Itrix FTSE100	SYGUK	156.64	155.42	167.72	166.02	5.99	1.16	1272.03	1348.20	0.54	88.80	315
Sygnia Itrix Gbl Pro ETF	SYGP	40.87	40.31	44.33	44.24	8.25	0.66	497.09	538.08	0.42	18.00	151
Sygnia Itrix MSCI EM 50	SYGEMF	13.96	14.05	16.11	15.64	12.03	0.20	2227.88	2496.00	8.98	140.24	188
Sygnia Itrix MSCI Japan	SYGJP	15.06	14.50	16.32	16.23	7.77	0.09	892.71	962.06	0.93	14.55	231
Sygnia Itrix MSCI US	SYGUS	61.05	60.20	65.84	65.72	7.65	0.17	5721.85	6126.68	0.95	60.12	723
Sygnia Itrix MSCI World	SYGWD	45.27	44.35	49.09	48.76	7.71	0.22	11325.80	12296.46	5.93	278.77	1017
Sygnia Itrix New China Sectors ETF	SYGCN	31.41	31.68	36.13	34.75	10.63	0.13	290.59	321.49	1.15	38.60	193
Sygnia Itrix S&P 500 ETF	SYG500	66.57	65.51	71.17	70.95	6.58	0.44	3391.83	3700.14	2.27	156.54	688
Sygnia Itrix SOL H150	SYGH	28.04	27.51	28.57	28.32	1.00	0.10	524.93	530.17	1.20	33.61	165
Sygnia Itrix SP Glob ESG	SYGESG	37.53	36.50	40.56	40.48	7.86	0.27	1247.30	1345.34	0.77	30.21	143
Sygnia Itrix SUS Economy	SYGSE	48.57	47.65	54.87	54.61	12.44	NULL	146.76	165.01	0.03	1.53	46

## MONTHLY DETAILED ETF INFORMATION

### SA EQUITY | OTHER

ETF (SORTED ALPHABETICALLY)		Prices in Rands				1M%	DISTRIBUTION	Value in Mn's		In 000's	in Mn's	TRADES
		START	LOW	HIGH	END			MCAP OPE	MCAP CLOSE			
Invest SA Property ETF	ETFSAP	32.88	30.17	33.98	31.45	-4.35	0.88	528.64	504.71	0.21	6.77	271
CoreShares DivTrax	DIVTRX	22.84	22.73	24.47	23.42	2.54	0.14	181.93	158.45	0.13	3.02	179
CoreShares PrefTrax	PREFTX	10.34	10.14	10.48	10.29	-0.48	0.11	419.69	417.66	0.46	4.75	230
CoreShares SProp	CSPROP	11.04	10.50	11.22	10.66	-3.44	0.26	330.87	329.07	2.12	23.00	451
CoreShares SciBeta M-FI	SMART	50.23	49.90	54.80	53.80	7.11	0.14	118.46	126.88	0.04	2.05	82
CORESHARESTOP50	CTOP50	30.37	30.20	32.83	32.04	5.50	0.15	1344.42	1434.36	0.44	14.05	236
FNB MIDCAP ETF	FNB MID	7.78	7.66	8.12	7.95	2.19	0.05	632.92	650.72	1.60	12.76	355
NEWFUNDS EQUITY MOM ETF	NFEMOM	41.82	41.29	44.37	43.59	4.23	0.10	355.06	370.09	0.05	2.14	75
NewFUNDS MAPP Growth	MAPP SG	28.07	28.06	29.66	29.25	4.20	0.20	50.71	52.85	0.01	0.27	47
Newfunds MAPP Protect	MAPP SP	47.74	47.67	49.62	48.79	2.20	0.49	100.67	102.89	0.02	0.94	51
NewFunds S&P GIVI SA T50	GIVISA	47.28	46.96	50.45	49.80	5.33	0.24	97.27	102.45	0.04	2.10	67
NF Equity Value ETF	NFEVAL	13.09	12.96	13.90	13.71	4.74	0.06	402.10	421.15	2.94	40.08	400
NF Low Volatility ETF	NFEVOL	10.09	10.03	10.38	10.22	1.29	0.07	132.71	134.42	0.13	1.32	39
NF VM Defensive EquityETF	NFEDEF	10.74	10.84	11.08	11.04	2.79	0.09	55.68	57.23	0.03	0.34	19
NF VM High Growth EQETF	NFEHGE	10.58	10.48	10.87	10.75	1.61	0.10	78.03	79.28	0.03	0.30	44
NF VM Moderate Equity ETF	NFEMOD	10.34	10.29	10.76	10.69	3.38	0.09	57.54	59.48	0.00	0.04	12
Satrix Capped ALL Share	STXCAP	37.70	37.57	41.50	40.08	6.31	0.08	421.46	440.06	0.49	19.62	128
Satrix DIVI Plus Portfolio	STXDIV	3.18	3.15	3.35	3.21	0.94	0.01	2297.20	2322.08	25.06	80.75	1134
Satrix FINI Portfolio	STXFIN	15.85	15.67	16.50	16.15	1.89	0.17	1048.27	1068.11	1.59	25.55	562
Satrix I & D ETF	STXID	30.17	30.37	31.62	31.73	5.17	0.17	16.32	17.16	0.02	0.49	19
Satrix INDI Portfolio	STXIND	92.53	89.01	104.06	101.20	9.37	0.13	2020.71	2184.75	0.28	27.10	714
Satrix Momentum Portfolio	STXMMT	12.56	12.49	13.36	12.98	3.34	0.04	35.27	36.44	0.05	0.63	71
Satrix Property Portfolio	STXPRO	9.49	9.06	9.66	9.15	-3.58	0.25	324.29	320.90	1.24	11.64	357
Satrix Quality SA Port	STXQUA	7.97	7.76	8.40	8.31	4.27	0.01	60.86	59.30	0.10	0.84	72
Satrix RESI Portfolio	STXRES	73.42	71.94	82.00	76.89	4.73	NULL	1041.68	1090.91	0.43	33.52	729

### SA EQUITY | TOP 40

ETF (SORTED ALPHABETICALLY)		Prices in Rands				1M%	DISTRIBUTION	Value in Mn's		In 000's	in Mn's	TRADES
		START	LOW	HIGH	END			MCAP OPE	MCAP CLOSE			
Invest SWIX 40 ETF	ETFSWX	13.06	12.98	14.06	13.69	4.82	0.08	1561.30	1636.61	0.07	0.98	102
Invest TOP 40 ETF	ETFT40	68.69	67.00	76.00	73.41	6.87	0.19	602.57	643.97	0.22	16.23	271
FNB TOP 40 ETF	FNB T40	68.77	68.39	75.53	73.57	6.98	0.22	2348.61	2483.11	1.67	121.02	537
NEWFUNDS SHARIA TOP40	NFSH40	4.21	4.10	4.60	4.44	5.46	NULL	65.57	69.15	0.49	2.23	156
Satrix 40 Portfolio	STX40	68.68	67.50	77.46	73.54	7.08	0.22	12842.61	13604.31	2.34	170.66	2546
Satrix RAFI 40 Portfolio	STXRAF	21.99	21.75	24.17	23.67	7.64	0.00	1255.13	1351.02	0.64	14.98	312
Satrix SWIX Top 40 Portfolio	STXSWX	13.03	12.93	14.05	13.71	5.22	0.05	397.65	418.40	0.31	4.30	163
Sygnia Itrix SWIX40 ETF	SYGSW4	13.17	13.16	13.87	13.59	3.19	0.26	182.96	188.79	0.56	7.71	76
Sygnia Itrix Top 40 ETF	SYGT40	69.79	69.42	75.02	73.40	5.17	1.36	490.26	515.62	0.10	7.52	128

The information, data and compilations, or any part thereof, which make up the JSE ETF Factsheet ("Data") is being provided to you strictly for informational purposes. JSE Limited ("JSE") reserves the right to withdraw, modify, or replace the Data (or any part thereof) at any time.

To the extent allowed by law, JSE does not (expressly, tacitly or impliedly) guarantee or warrant the availability, sequence, accuracy, completeness, reliability or any other aspect of any of the Data or that the Data contained therein is up to date. To the extent allowed by law, neither the JSE nor any of its directors, officers, employees, contractors, agents or representatives are liable to any way to the reader/user or to any other natural or juristic person (Person) for any loss or damage as a result of any errors contained in the specification, for any loss arising from use of, or reliance on the Data in this JSE ETF Factsheet or any actions taken or not taken by or behalf of any Person in reliance on any Data in this JSE ETF Factsheet. You may not copy, reproduce, redistribute, alter or transmit any Data without the prior written consent of the JSE.

**The Johannesburg Stock Exchange** prides itself on a 130 year history as an effective, reputable trading platform. We are currently ranked the 19th largest stock exchange in the world based on market capitalization, and the largest exchange on the African continent. The JSE offers secure and efficient primary and secondary capital markets across a diverse range of asset classes which include equities, commodities, currencies, interest rates and bonds. We are the exchange of choice for local and international investors looking for investment opportunities across leading capital markets in South Africa and the broader African continent.

The JSE's achievements escalate through to this year's 20th anniversary of the first ETF listing on the local Exchange Traded Fund (ETF) market. Today, the ETF market capitalization is close to R90bn with over 70 listed ETFs on the JSE Main Board.

**Our Primary Markets Team** is a key access point for existing and/or potential issuers to gain exposure to local and international investor capital. The team focuses on listing companies and instruments on the Equity (Main Board and AltX) or Debt Market and aids in product development.

Contact the team: [listingontheJSE@jse.co.za](mailto:listingontheJSE@jse.co.za)

**Our Information Services Team** works to deliver world class market data to our clients. This data can often be customized on request providing our clients with the exact Intel required to make business and portfolios decisions.

We offer live, delayed, end of day, reference and historical market data for:

- Equities
- Indices
- Equity Derivatives
- Commodity Derivatives
- Commodity Derivatives
- Currency Derivatives
- Interest Rate Derivatives
- Bonds
- Market Announcements (SENS)

We have nearly 170 indices across a wide variety of methodologies and investment criteria.

Our partnership with FTSE Russell includes:

- FTSE/JSE All Share
- FTSE/JSE Top 40
- FTSE/JSE ESG
- FTSE/JSE Factor Indices
- FTSE/JSE Shariah
- FTSE/JSE RAFI and many more

We develop customised indices to suit your needs.

- Our other service offerings include:
- Bond ETP data
- Tick data
- Corporate Actions
- Business Intelligence Reports
- Valuations

Contact the team: [mdclients@jse.co.za](mailto:mdclients@jse.co.za)