

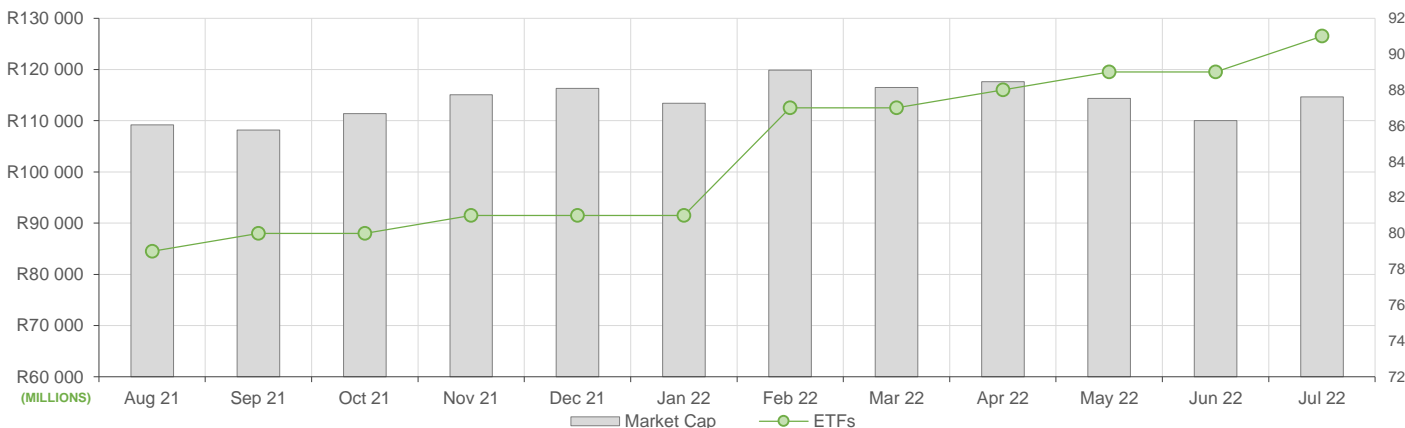
July showed increased ETF activity compared to June, here is what we have seen:

- ETF Market Capitalization showed a month-on-month increase, to roughly R114bn. ETF unit creations were largely reflected in SA Top 40 and fixed income ETFs, whereas unit redemptions were seen in commodity ETFs and offshore equity ETFs.
- Month-on-month ETF value traded was higher compared to June's activity, reflecting roughly R4bn in total value traded during the month.
- Month-on-Month ETF returns showed positive performances across almost all ETFs

NEW LISTINGS AND DELISTINGS

ETF	CODE	ISSUER	EVENT	DATE
Satrix Smart City Inf ETF	STXCTY	Satrix Managers (RF) (Pty) Ltd	Listing	--
INVEST MSCI WORLD SRI ETF	ETFSRI	Stanlib Collective Investments	Listing	--

MARKET CAPITALISATION ANALYSIS | Total Industry



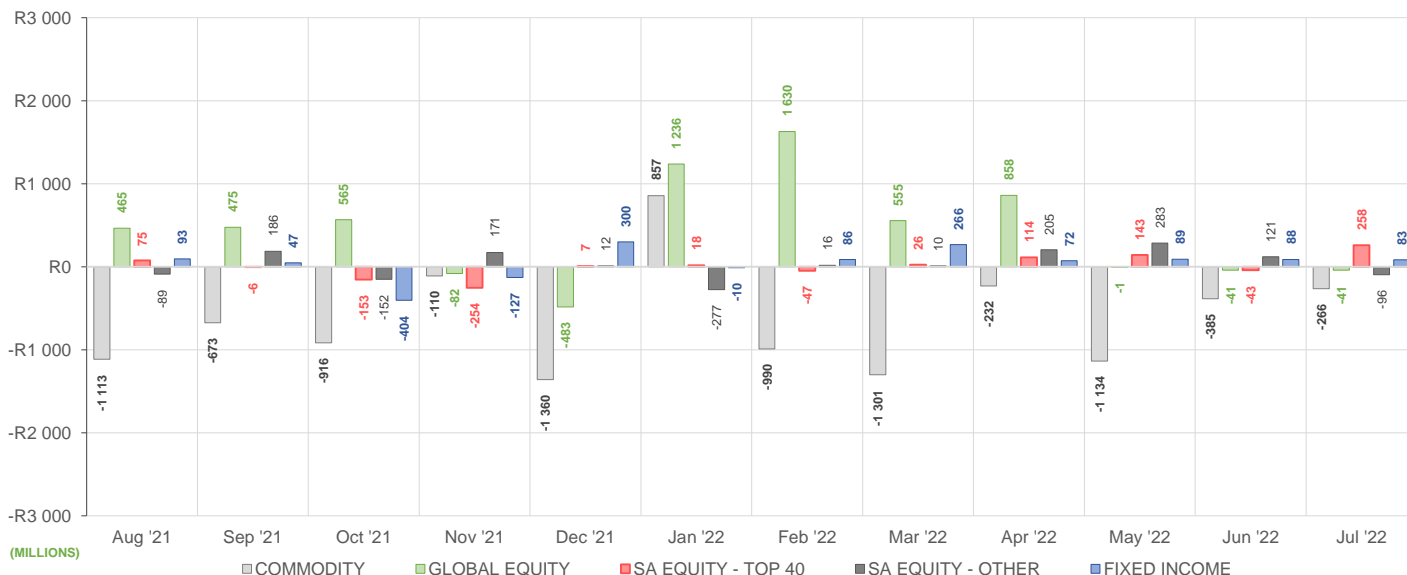
NET DAILY EXCHANGE CREATIONS AND REDEMPTIONS | Top & Bottom Five ETFs

TOP 5 INSTRUMENTS	CODE	TOTAL DAILY CREATIONS	TOTAL DAILY REDEMPTIONS	NET MONTHLY CREATIONS
Satrix 40 Portfolio	STX40	R128 410 000	---	R128 410 000
FNB TOP 40 ETF	FNBT40	R103 200 000	---	R103 200 000
Satrix MSCI EMG Markets	STXEMG	R98 480 000	-R9 503 000	R88 977 000
NEWFUNDS GOVI ETF	NFGOVI	R74 250 000	---	R74 250 000
Satrix S&P 500 Feeder	STX500	R41 033 500	---	R41 033 500

BOTTOM 5 INSTRUMENTS	CODE	TOTAL DAILY CREATIONS	TOTAL DAILY REDEMPTIONS	NET MONTHLY CREATIONS
Sygnia Itrix MSCI World	SYGWD	R45 570 000	-R126 155 623	-R80 585 623
Invest SA Property ETF	ETFSAP	R17 757 275	-R101 952 000	-R84 194 725
New Gold Platinum ETF	NGPLT	R27 965 000	-R112 937 000	-R84 972 000
Satrix MSCI World Feeder	STXWDM	R11 684 000	-R184 266 000	-R172 582 000
New Gold Issuer Ltd	GLD	---	-R219 773 500	-R219 773 500

Considers the daily update to total number of issued units listed on the exchange over the calendar month, with Creations representing a day-on-day increase in total number of listed units, and Redemptions representing a decrease. An average day-on-day price is used to estimate the ZAR value of each net daily movement. No secondary market transactions are considered.

NET MONTHLY EXCHANGE CREATIONS AND REDEMPTIONS



MONTHLY ETF PERFORMANCE | Top & Bottom Five ETFs

TOP 5 INSTRUMENTS	CODE	TOTAL RETURN	VOLATILITY	MAX DRAW DOWN
1invest S&P500 IT ETF	ETF5IT	15.28%	8.93%	-2.69%
Satrix Nasdaq 100 Prtf	STXNDQ	13.27%	6.91%	-3.07%
CoreShares SAProp	CSPROP	11.70%	2.87%	-3.59%
Sygnia Itrix 4lnd Rev Gb	SYG4IR	11.64%	7.06%	-4.36%
Satrix MSCI India ETF	STXNDA	10.38%	5.38%	-2.38%

BOTTOM 5 INSTRUMENTS	CODE	TOTAL RETURN	VOLATILITY	MAX DRAW DOWN
FNB GOV INF LNKD BND ETF	FNBNIF	-1.66%	2.35%	-2.61%
Satrix MSCI China ETF	STXCHN	-8.59%	8.03%	-11.53%
SYGNIA ITRIX NEW CHINA SECTORS ETF	SYGCN	-8.71%	5.63%	-11.70%
Africa Sovereign Bond ETF	ASBI	-10.56%	39.45%	-15.63%
AMI Big50 ex-SA ETF	AMIB50	-26.95%	60.18%	-36.71%

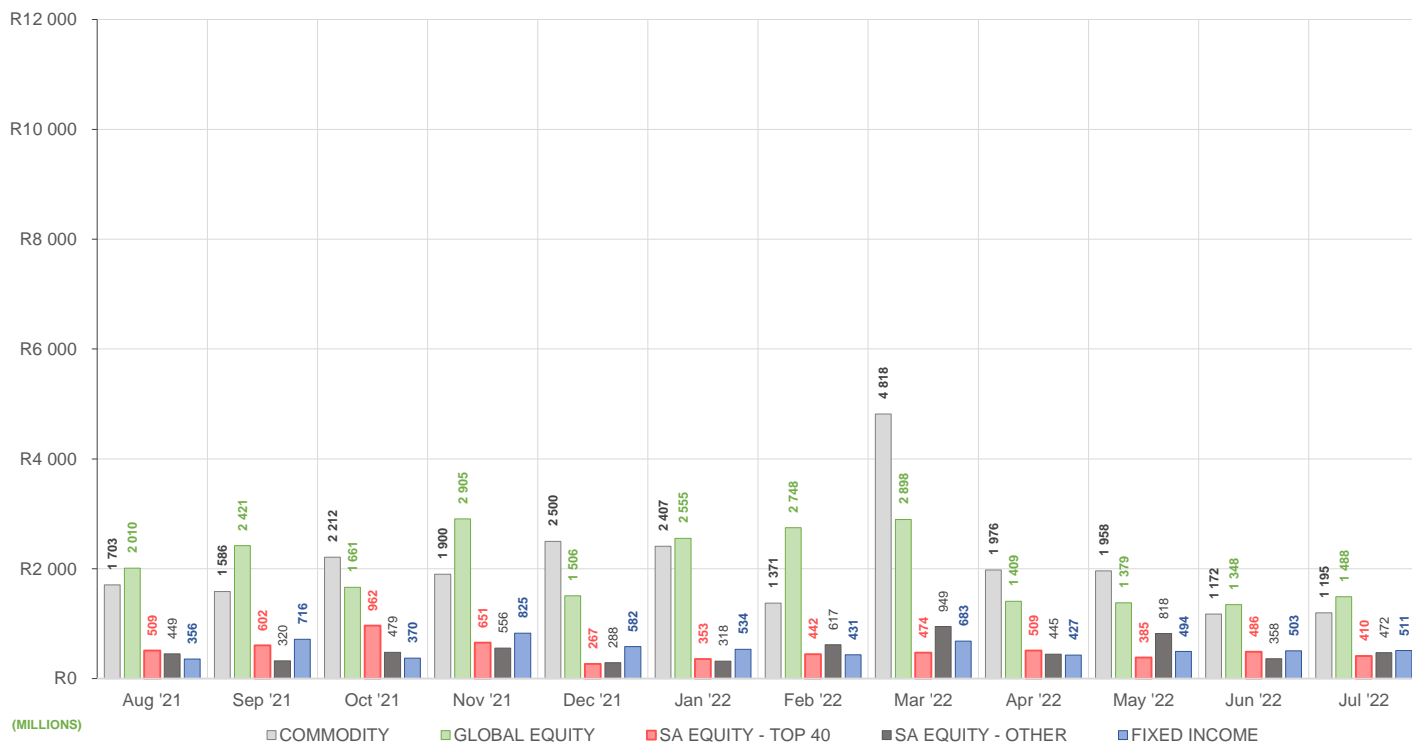
ROLLING 12-MONTH ETF PERFORMANCE | Top & Bottom Five ETFs

TOP 5 INSTRUMENTS	CODE	TOTAL RETURN	VOLATILITY	MAX DRAW DOWN
CoreShares PrefTrax	PREFTX	53.33%	20.00%	-12.24%
Satrix FINI Portfolio	STXFIN	23.26%	21.86%	-17.82%
NF Equity Value ETF	NFEVAL	22.04%	20.20%	-14.82%
Satrix Global IFR ETF	STXIFR	20.54%	15.67%	-13.03%
Satrix RAFI 40 Portfolio	STXRAF	18.74%	19.76%	-16.19%

BOTTOM 5 INSTRUMENTS	CODE	TOTAL RETURN	VOLATILITY	MAX DRAW DOWN
Satrix MSCI China ETF	STXCHN	-19.42%	30.73%	-37.89%
Sygnia Itrix MSCI EM 50	SYGEMF	-20.57%	235.38%	-81.58%
Sygnia Itrix 4lnd Rev Gb	SYG4IR	-21.16%	25.71%	-39.02%
Africa Sovereign Bond ETF	ASBI	-27.87%	102.85%	-48.92%
AMI Big50 ex-SA ETF	AMIB50	-38.54%	99.80%	-44.13%

Total Return is the monthly/annual performance incorporating price performance and immediate reinvestment of dividends. Volatility is the based on daily price standard deviation and presented as a monthly/annual volatility. Maximum draw down measures the worst case return outcome for an investor over the course of the period – based on purchase and subsequent sale timing that results in the largest loss of capital.

MONTHLY VALUE TRADED FOR ALL ETFs



MONTHLY ETF TRADE STATISTICS | Top & Bottom Five Funds

TOP 5 INSTRUMENTS	CODE	VOLUME	VALUE	TRADES	LIQUIDITY
Satrix MSCI World Feeder	STXWDM	4 740 418	R287 773 229.20	1 070	4.91%
Satrix 40 Portfolio	STX40	3 878 067	R238 494 543.00	1 957	2.13%
1invest SA Property ETF	ETFSAP	5 640 686	R174 328 413.40	928	18.86%
Satrix ILBI Portfolio	STXILB	6 206 147	R44 106 792.80	424	8.38%
Satrix DIVI Plus Portfolio	STXDIV	11 239 704	R34 490 971.01	1 089	1.65%

BOTTOM 5 INSTRUMENTS	CODE	VOLUME	VALUE	TRADES	LIQUIDITY
KR Custodial Certificate	KCCGLD	934	R28 088 051.00	20	2.96%
1investRhodium ETF	ETFRHO	3 357	R7 706 195.83	185	1.86%
1invest G7 Govt Bond ETF	ETFGGB	12 435	R1 002 061.02	74	2.67%
NF VM Defensive EquityETF	NFEDEF	7 063	R73 948.38	9	0.14%
NF VM High Growth EQETF	NFEHGE	5 615	R57 571.00	24	0.08%

Volume, Value and Trades are the aggregate counts of all trade activity in the ETF for the month on the JSE equity market. This includes central order book and reported trades, but excludes creations and redemptions. Liquidity is the total volume traded expressed as a percentage of the number of listed instruments for the ETF as at the end of the month.

MONTHLY DETAILED ETF INFORMATION

SA EQUITY | TOP 40

Prices in Rands

In Rands

Values in Mn's

in 000's | in Mn's

STANLIB COLLECTIVE INVESTMEN' CODE	START	LOW	HIGH	END	1M %	DISTRIBUTION	MCAP OPEN	MCAP CLOSE	VOL	VALUE	TRADES	
1invest SWIX 40 ETF	ETFSWX	11.86	11.75	12.30	12.07	1.77	0.13	1582.94	1610.97	0.04	0.51	53.00
1invest TOP 40 ETF	ETFT40	60.04	59.00	62.97	62.52	4.13	0.50	631.39	653.72	0.07	4.17	109.00

FNB CIS MANCO (RF) (PROPRIETAR CODE)	START	LOW	HIGH	END	1M %	DISTRIBUTION	MCAP OPEN	MCAP CLOSE	VOL	VALUE	TRADES	
FNB TOP 40 ETF	FNBT40	60.17	59.00	63.24	62.58	4.01	0.58	2054.91	2243.60	1.54	94.45	322.00

Satrix Managers (RF) (Pty) Ltd	CODE	START	LOW	HIGH	END	1M %	DISTRIBUTION	MCAP OPEN	MCAP CLOSE	VOL	VALUE	TRADES
Satrix 40 Portfolio	STX40	60.27	58.75	63.18	62.54	3.77	0.59	10866.20	11406.80	3.88	238.49	1957.00
Satrix SWIX Top 40 Portfolio	STXSWX	11.83	11.59	12.42	12.07	2.03	0.11	353.93	365.94	0.49	5.91	131.00

SYGNIA ITRIX (RF) PROPRIETARY L CODE	START	LOW	HIGH	END	1M %	DISTRIBUTION	MCAP OPEN	MCAP CLOSE	VOL	VALUE	TRADES	
Sygnia Itrix SWIX40 ETF	SYGSW4	12.01	11.59	12.48	12.11	0.83	0.23	166.84	168.23	0.30	3.61	47.00
Sygnia Itrix Top 40 ETF	SYGT40	61.30	58.46	63.78	62.85	2.53	1.43	430.62	441.51	0.13	8.16	115.00

SA EQUITY | OTHER

Prices in Rands

In Rands

Values in Mn's

in 000's | in Mn's

STANLIB COLLECTIVE INVESTMEN' CODE	START	LOW	HIGH	END	1M %	DISTRIBUTION	MCAP OPEN	MCAP CLOSE	VOL	VALUE	TRADES	
1invest SA Property ETF	ETFSAP	29.47	29.40	32.05	31.47	6.79	0.85	961.25	941.36	5.64	174.33	928.00

FNB CIS MANCO (RF) (PROPRIETAR CODE)	START	LOW	HIGH	END	1M %	DISTRIBUTION	MCAP OPEN	MCAP CLOSE	VOL	VALUE	TRADES	
FNB MIDCAP ETF	FNBMID	7.26	7.00	7.79	7.57	4.27	0.09	565.21	610.54	3.03	22.43	298.00

CORESHARES INDEX TRACKER MA CODE	START	LOW	HIGH	END	1M %	DISTRIBUTION	MCAP OPEN	MCAP CLOSE	VOL	VALUE	TRADES	
CoreShares DivTrax	DIVTRX	20.97	20.03	22.04	20.72	-1.19	0.34	131.39	129.82	0.11	2.30	118.00
CORESHARESTOP50	CTOP50	27.23	26.47	28.44	28.15	3.38	0.27	1244.53	1286.58	0.22	6.18	158.00
CoreShares SciBeta M-FI	SMART	46.17	45.59	48.03	46.50	0.71	0.69	118.12	118.96	0.10	4.72	72.00
CoreShares PrefTrax	PREFTX	10.25	10.26	11.16	10.90	6.34	0.15	416.04	442.42	2.24	23.68	215.00
CoreShares SAProp	CSPROP	9.71	9.69	10.67	10.61	9.27	0.22	264.51	289.03	1.53	15.72	433.00

NEWFUNDS COLLECTIVE INVESTM CODE	START	LOW	HIGH	END	1M %	DISTRIBUTION	MCAP OPEN	MCAP CLOSE	VOL	VALUE	TRADES	
NEWFUNDS EQUITY MOM ETF	NFEMOM	37.47	37.09	39.79	39.41	5.18	0.34	318.13	334.60	0.05	1.78	67.00
Newfunds MAPPs Growth	MAPPSP	25.47	25.17	26.29	26.02	2.16	0.22	46.02	47.01	0.04	1.08	37.00
Newfunds MAPPs Protect	MAPPSP	44.85	44.27	45.53	45.31	1.03	0.43	49.73	50.24	0.15	6.82	57.00
NewFunds S&P GIVI SA T50	GIVISA	40.96	40.00	43.00	41.90	2.29	0.18	84.27	86.20	0.04	1.50	51.00
NEWFUNDS SHARIA TOP40	NFSH40	3.67	3.47	3.89	3.89	5.99	0.01	57.16	60.59	0.44	1.67	157.00
NF Equity Value ETF	NFEVAL	11.56	11.44	12.40	12.16	5.19	0.13	314.64	330.98	1.81	21.22	177.00
NF Low Volatility ETF	NFEVOL	9.36	9.38	9.89	9.75	4.17	0.11	123.10	128.23	0.08	0.81	35.00
NF VM Defensive EquityETF	NFEDEF	10.50	10.46	10.52	10.51	0.10	0.08	54.43	54.48	0.01	0.07	9.00
NF VM High Growth EQETF	NFEHGE	10.11	10.06	10.62	10.45	3.36	0.11	74.56	77.07	0.01	0.06	24.00
NF VM Moderate Equity ETF	NFEMOD	9.97	9.95	10.27	10.12	1.50	0.12	55.48	56.31	0.10	1.06	24.00

Satrix Managers (RF) (Pty) Ltd	CODE	START	LOW	HIGH	END	1M %	DISTRIBUTION	MCAP OPEN	MCAP CLOSE	VOL	VALUE	TRADES
Satrix DIVI Plus Portfolio	STXDIV	3.04	2.92	3.16	3.11	2.30	0.05	2056.23	2116.01	11.24	34.49	1089.00
Satrix FINI Portfolio	STXFIN	14.82	14.46	15.64	15.33	3.44	0.26	971.26	1023.08	1.93	29.14	504.00
Satrix INDI Portfolio	STXIND	79.81	79.23	85.46	83.46	4.57	0.28	1794.80	1876.89	0.25	20.38	592.00
Satrix Momentum Portfolio	STXMMT	11.55	11.40	12.17	11.95	3.46	0.06	32.43	33.55	0.08	0.98	71.00
Satrix Property Portfolio	STXPRO	8.82	8.73	9.55	9.43	6.92	0.24	282.87	338.27	1.04	9.59	288.00
Satrix Quality SA Port	STXQUA	7.26	6.91	7.62	7.42	2.20	0.01	59.07	60.37	0.10	0.75	74.00
Satrix RAFI 40 Portfolio	STXRAF	19.09	18.65	20.30	20.04	4.98	0.00	1120.15	1175.89	0.57	11.28	254.00
Satrix RESI Portfolio	STXRES	63.51	58.57	67.50	65.44	3.04	0.48	850.27	882.65	0.63	39.92	778.00

GLOBAL EQUITY

Prices in Rands

In Rands

Values in Mn's

in 000's | in Mn's

STANLIB COLLECTIVE INVESTMEN' CODE	START	LOW	HIGH	END	1M %	DISTRIBUTION	MCAP OPEN	MCAP CLOSE	VOL	VALUE	TRADES	
1invest Global REIT ETF	ETFGRE	20.00	19.50	22.18	21.68	8.40	0.12	48.59	52.67	0.06	1.17	109.00
1invest MSCI World ETF	ETFWLD	57.81	57.79	65.00	63.14	9.22	--	101.98	111.38	0.05	3.39	93.00
1INVEST S&P500 INDEX ETF	ETF500	316.99	315.24	350.36	349.08	10.12	--	107.75	122.15	0.05	16.47	213.00
1invest S&P500 IT ETF	ETF5IT	12.89	12.76	14.93	14.86	15.28	--	436.83	518.60	1.81	24.90	404.00

ASHBURTON MANAGEMENT COMP CODE	START	LOW	HIGH	END	1M %	DISTRIBUTION	MCAP OPEN	MCAP CLOSE	VOL	VALUE	TRADES	
FNB GLOBAL 1200 FOF ETF	FNBEQF	60.31	60.10	66.50	65.41	8.46	--	1331.64	1469.11	0.17	11.07	271.00

CLOUD ATLAS (RF) PROPRIETARY CODE	START	LOW	HIGH	END	1M %	DISTRIBUTION	MCAP OPEN	MCAP CLOSE	VOL	VALUE	TRADES	
AMI Big50 ex-SA ETF	AMIB50	7.05	6.00	8.00	5.15	-26.95	--	5.34	3.90	0.02	0.12	113.00

CORESHARES INDEX TRACKER MA CODE	START	LOW	HIGH	END	1M %	DISTRIBUTION	MCAP OPEN	MCAP CLOSE	VOL	VALUE	TRADES	
CoreShares Global Prop	GLPROP	41.37	40.70	43.97	43.98	6.31	--	580.68	617.31	0.96	40.76	312.00
CoreShares GlobalDivTrax	GLODIV	15.61	15.50	16.84	16.33	4.61	0.13	888.55	929.53	3.02	48.75	551.00
CoreShares S&P 500	CSP500	62.50	62.35	69.13	68.87	10.19	--	1389.71	1550.29	0.44	29.21	415.00

Satrix Managers (RF) (Pty) Ltd	CODE	START	LOW	HIGH	END	1M %	DISTRIBUTION	MCAP OPEN	MCAP CLOSE	VOL	VALUE	TRADES
Satrix MSCI EMG Markets	STXEMG	47.53	46.58	50.13	48.47	1.98	--	1709.78	1830.84	2.74	134.75	495.00
Satrix MSCI World Feeder	STXWDM	58.17	57.93	64.00	63.47	9.11	--	5784.17	6133.46	4.74	287.77	1070.00
Satrix Nasdaq 100 Prtf	STXNDQ	106.86	106.21	122.00	121.04	13.27	--	2513.44	2859.07	0.53	61.16	1061.00
Satrix S&P 500 Feeder	STX500	63.83	63.45	70.79	70.20	9.98	--	2615.37	2918.50	1.27	86.69	1499.00
Satrix MSCI China ETF	STXCHN	41.81	37.81	44.98	38.22	-8.59	--	1152.14	1060.86	0.98	40.56	1238.00
Satrix MSCI EM ESG ETF	STXEME	42.05	41.51	44.10	42.61	1.33	--	109.52	110.98	0.03	1.14	85.00
Satrix MSCI World ESG ETF	STXESG	51.14	50.53	56.31	55.91	9.33	--	148.73	162.60	0.06	3.12	114.00

SYGNIA ITRIX (RF) PROPRIETARY L CODE	START	LOW	HIGH	END	1M %	DISTRIBUTION	MCAP OPEN	MCAP CLOSE	VOL	VALUE	TRADES	
Sygnia Itrix 4Ind Rev Gb	SYG4IR	35.58	35.39	40.00	39.72	9.98	--	1961.48	2189.71	1.74	65.69	577.00
Sygnia Itrix Eurostoxx50	SYGEU	60.11	58.01	63.99	62.90	4.64	--	2580.99	2700.79	0.73	43.99	594.00
Sygnia Itrix FTSE100	SYGUK	143.59	141.56	151.58	149.23	3.93	2.37	1399.29	1454.26	0.41	60.49	291.00
Sygnia Itrix Gbl Pro ETF	SYGP	42.89	42.39	45.77	45.87	6.95	0.45	521.66	557.90	0.39	16.90	122.00
Sygnia Itrix MSCI Japan	SYGJP	13.88	13.77	14.89	14.76	6.34	0.10	843.32	896.79	0.45	6.48	212.00
Sygnia Itrix MSCI US	SYGUS	58.11	57.93	63.99	63.82	9.83	0.17	5678.74	6236.75	0.64	39.54	622.00
Sygnia Itrix MSCI World	SYGWD	42.43	42.00	47.07	45.95	8.30	0.27	10452.30	11237.42	3.51	156.67	984.00
Sygnia Itrix S&P 500 ETF	SYG500	63.08	62.94	69.50	69.08	9.51	0.39	2743.78	3004.76	0.75	49.87	569.00

MONTHLY DETAILED ETF INFORMATION

COMMODITIES

		Prices in Rands				In Rands		Values in Mn's		in 000's in Mn's		
INVEST ETF ISSUER (RF) LIMITED	CODE	START	LOW	HIGH	END	1M %	DISTRIBUTION	MCAP OPEN	MCAP CLOSE	VOL	VALUE	TRADES
1InvestGold ETF	ETFGLD	289.68	280.00	300.00	285.01	-1.61	--	561.98	552.92	0.04	12.10	147.00
1InvestPalladium ETF	ETFPLD	311.38	303.36	362.62	340.67	9.41	--	160.06	209.19	0.02	8.11	89.00
1InvestPlatinum ETF	ETFPLT	141.14	134.77	154.00	144.67	2.50	--	1724.03	1767.14	0.03	4.68	57.00
1InvestRhodium ETF	ETFRHO	2059.05	1929.28	2611.60	2220.83	7.86	--	364.26	401.76	0.00	7.71	185.00

FIRSTRAND BANK LIMITED	CODE	START	LOW	HIGH	END	1M %	DISTRIBUTION	MCAP OPEN	MCAP CLOSE	VOL	VALUE	TRADES
KR Custodial Certificate	KCCGLD	30424.50	29597.00	30443.00	29941.00	-1.59	--	958.83	943.59	0.00	28.09	20.00

NEWGOLD ISSUER (RF) LIMITED	CODE	START	LOW	HIGH	END	1M %	DISTRIBUTION	MCAP OPEN	MCAP CLOSE	VOL	VALUE	TRADES
New Gold Issuer Ltd	GLD	277.16	268.05	279.98	272.83	-1.56	--	15708.86	15245.18	3.09	842.95	1815.00
New Gold Platinum ETF	NGPLT	139.82	137.94	146.45	142.85	2.17	--	5648.73	5685.43	0.85	120.73	233.00
NewGold Palladium ETF	NGPLD	311.95	301.76	363.35	339.20	8.74	--	350.85	381.50	0.08	26.95	139.00

SA & GLOBAL FIXED INCOME

		Prices in Rands				In Rands		Values in Mn's		in 000's in Mn's		
STANLIB COLLECTIVE INVESTMEN' CODE	CODE	START	LOW	HIGH	END	1M %	DISTRIBUTION	MCAP OPEN	MCAP CLOSE	VOL	VALUE	TRADES
1Invest G7 Govt Bond ETF	ETFGGB	79.28	78.17	82.50	80.75	1.85	--	36.90	37.58	0.01	1.00	74.00
1Invest SA Bond ETF	ETFBND	84.36	80.25	87.48	87.14	3.30	1.97	75.92	87.14	0.17	14.24	111.00

ASHBURTON MANAGEMENT COMP CODE	CODE	START	LOW	HIGH	END	1M %	DISTRIBUTION	MCAP OPEN	MCAP CLOSE	VOL	VALUE	TRADES
FNB WORLD GOVBOND ETF	FNBWGB	6.80	6.70	7.30	6.96	2.35	--	123.32	126.22	0.21	1.49	151.00
FNB GOV INF LNKD BND ETF	FNBINF	22.95	22.16	22.95	22.40	-2.40	0.17	425.38	397.26	0.59	13.29	129.00

FIRSTRAND BANK LIMITED	CODE	START	LOW	HIGH	END	1M %	DISTRIBUTION	MCAP OPEN	MCAP CLOSE	VOL	VALUE	TRADES
2YR Dollar Custodial Cert	DCCUS2	1595.05	1577.70	1659.40	1606.65	0.73	--	240.85	242.60	0.02	33.45	50.00
Dollar Custodial Cert	DCCUSD	1585.45	1568.00	1640.00	1606.15	1.31	--	214.04	216.83	0.02	35.95	28.00

NEWFUNDS COLLECTIVE INVESTM CODE	CODE	START	LOW	HIGH	END	1M %	DISTRIBUTION	MCAP OPEN	MCAP CLOSE	VOL	VALUE	TRADES
NEWFUNDS TRACI 3-M ETF	NFTRCI	29.26	28.51	29.63	29.35	0.31	0.33	243.35	244.10	0.23	6.66	131.00
NEWFUNDS GOVI ETF	NFGOVI	75.89	73.18	78.25	75.80	-0.12	1.80	3219.19	3291.17	3.73	278.93	2224.00
NEWFUNDS ILBI ETF	NFILBI	83.33	78.00	83.32	82.09	-1.49	0.21	116.66	114.93	0.07	5.44	88.00
NFNAM 10 Bonds	NFNAMB	16.76	16.49	17.14	17.04	1.67	0.40	342.44	348.17	0.01	0.12	20.00

Satrix Managers (RF) (Pty) Ltd	CODE	START	LOW	HIGH	END	1M %	DISTRIBUTION	MCAP OPEN	MCAP CLOSE	VOL	VALUE	TRADES
Satrix ILBI Portfolio	STXILB	7.20	6.81	7.25	7.07	-1.81	0.05	525.71	523.29	6.21	44.11	424.00
Satrix Global Bond ETF	STXGBD	37.04	36.20	38.38	37.50	1.24	--	40.79	45.04	0.19	7.10	99.00
Satrix SA Bond Portfolio	STXGOV	8.37	8.02	8.59	8.51	1.67	--	786.62	808.29	7.22	60.35	339.00

The information, data and compilations, or any part thereof, which make up the JSE ETF Factsheet ("Data") is being provided to you strictly for informational purposes. JSE Limited ("JSE") reserves the right to withdraw, modify, or replace the Data (or any part thereof) at any time.

To the extent allowed by law, JSE does not (expressly, tacitly or impliedly) guarantee or warrant the availability, sequence, accuracy, completeness, reliability or any other aspect of any of the Data or that the Data contained therein is up to date. To the extent allowed by law, neither the JSE nor any of its directors, officers, employees, contractors, agents or representatives are liable to any way to the reader/user or to any other natural or juristic person (Person) for any loss or damage as a result of any errors contained in the specification, for any loss arising from use of, or reliance on the Data in this JSE ETF Factsheet or any actions taken or not taken by or behalf of any Person in reliance on any Data in this JSE ETF Factsheet. You may not copy, reproduce, redistribute, alter or transmit any Data without the prior written consent of the JSE.

The Johannesburg Stock Exchange prides itself on a 130 year history as an effective, reputable trading platform. We are currently ranked the 19th largest stock exchange in the world based on market capitalization, and the largest exchange on the African continent. The JSE offers secure and efficient primary and secondary capital markets across a diverse range of asset classes which include equities, commodities, currencies, interest rates and bonds. We are the exchange of choice for local and international investors looking for investment opportunities across leading capital markets in South Africa and the broader African continent.

The JSE's achievements escalate through to this year's 20th anniversary of the first ETF listing on the local Exchange Traded Fund (ETF) market. Today, the ETF market capitalization is close to R90bn with over 70 listed ETFs on the JSE Main Board.

Our Primary Markets Team is a key access point for existing and/or potential issuers to gain exposure to local and international investor capital. The team focuses on listing companies and instruments on the Equity (Main Board and AltX) or Debt Market and aids in product development.

Contact the team: listingontheJSE@jse.co.za

Our Information Services Team works to deliver world class market data to our clients. This data can often be customized on request providing our clients with the exact Intel required to make business and portfolio decisions.

We offer live, delayed, end of day, reference and historical market data for:

- Equities
- Indices
- Equity Derivatives
- Commodity Derivatives
- Commodity Derivatives
- Currency Derivatives
- Interest Rate Derivatives
- Bonds
- Market Announcements (SENS)

We have nearly 170 indices across a wide variety of methodologies and investment criteria.

Our partnership with FTSE Russell includes:

- FTSE/JSE All Share
- FTSE/JSE Top 40
- FTSE/JSE ESG
- FTSE/JSE Factor Indices
- FTSE/JSE Shariah
- FTSE/JSE RAFI and many more

We develop customised indices to suit your needs.

- Our other service offerings include:
- Bond ETP data
- Tick data
- Corporate Actions
- Business Intelligence Reports
- Valuations

Contact the team: mdclients@jse.co.za