

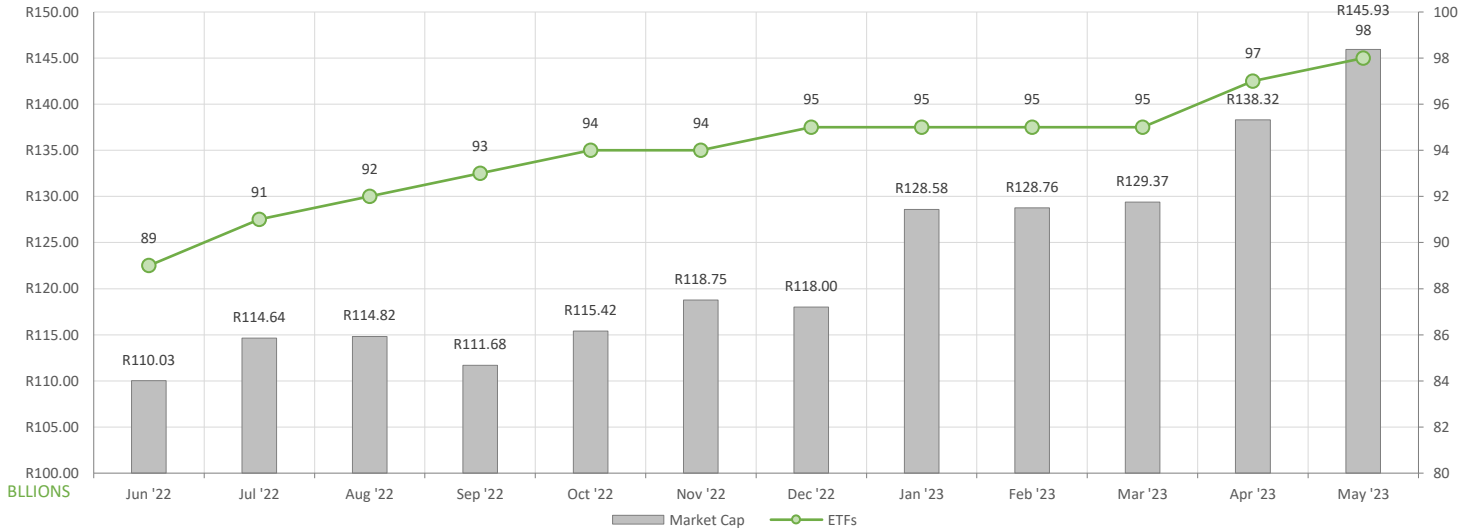
May showed slight increased ETF activity compared to April, here is what we have seen:

- ETF Market Capitalization showed a month-on-month increase of 5.5%. ETF unit creations were largely reflected in commodity ETFs.
- Month-on-month ETF value traded slightly higher compared to April's activity, reflecting roughly R7.1bn in total value traded during the month.
- Month-on-Month ETF returns showed a majority of negative performances across local equity ETFs positive performances across global equity ETFs.

NEW LISTINGS & DELISTINGS

ETF	CODE	ISSUER	EVENT	DATE
CSI Actively Managed ETF	INCOME	COESHARES INDEX TRACKER MANAGERS (RF) PROPRIET.	Listing	---
CoreShares YSB	CSYSB	COESHARES INDEX TRACKER MANAGERS (RF) PROPRIET.	Listing	---

MARKET CAPITALISATION ANALYSIS | Total Industry



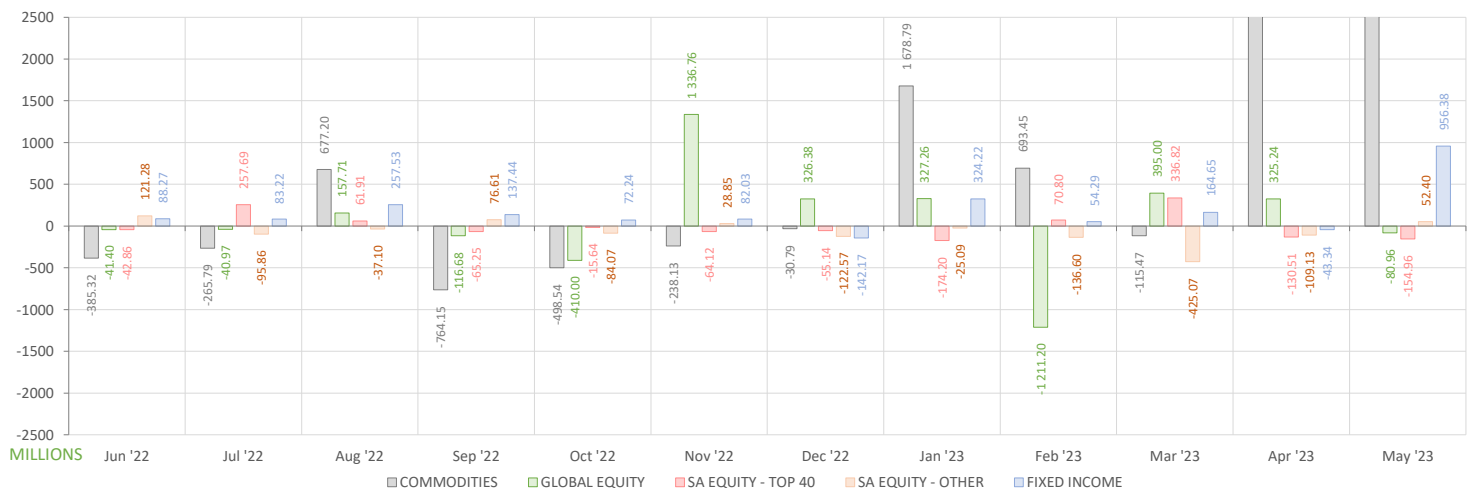
NET DAILY EXCHANGE CREATION & REDEMPTIONS | Top & Bottom Five ETFs

TOP FIVE INSTRUMENTS	CODE	TOTAL DAILY CREATIONS	TOTAL DAILY REDEMPTIONS	NET MONTHLY CREATIONS
1InvestPlatinum ETF	ETFPLT	R2 411 020 250.00	-R130 928 000.00	R2 280 092 250.00
1InvestPalladium ETF	ETFPLD	R717 746 505.00	---	R717 746 505.00
CSI Actively Managed ETF	INCOME	R509 831 493.20	---	R509 831 493.20
CoreShares TotalWldStock	GLOBAL	R265 775 754.80	---	R265 775 754.80
1InvestGold ETF	ETFGLD	R169 093 500.00	---	R169 093 500.00

BOTTOM FIVE INSTRUMENTS	CODE	TOTAL DAILY CREATIONS	TOTAL DAILY REDEMPTIONS	NET MONTHLY CREATIONS
Satrix 40 Portfolio	STX40	---	-R95 493 000.00	-R95 493 000.00
Satrix Capped ALL Share	STXCAP	---	-R121 326 500.00	-R121 326 500.00
Sygnia Itrix MSCI US	SYGUS	---	-R185 609 000.00	-R185 609 000.00
New Gold Platinum ETF	NGPLT	---	-R238 652 000.00	-R238 652 000.00
Sygnia Itrix Eurostoxx50	SYGEU	---	-R395 901 846.80	-R395 901 846.80

Considers the daily update to total number of issued units listed on the exchange over the calendar month, with Creations representing a day-on-day increase in total number of listed units, and Redemptions representing a decrease. An average day-on-day price is used to estimate the ZAR value of each net daily movement. No secondary market transactions are considered.

NET MONTHLY EXCHANGE CREATIONS & REDEMPTIONS



MONTHLY ETF PERFORMANCE | Top & Bottom Five ETFs

TOP FIVE INSTRUMENTS	CODE	TOTAL RETURN	VOLATILITY	MAX DRAW DOWN
1invest S&P500 IT ETF	ETF5IT	19.79%	10.67%	-4.00%
Satrix Nasdaq 100 Prtf	STXNDQ	16.38%	7.89%	-3.50%
Sygnia Itrix MSCI Japan	SYGJP	9.82%	5.25%	-2.45%
Satrix MSCI India ETF	STXNDA	9.78%	4.54%	-1.28%
Sygnia Itrix S&P 500 ETF	SYG500	8.57%	6.01%	-3.76%

BOTTOM FIVE INSTRUMENTS	CODE	TOTAL RETURN	VOLATILITY	MAX DRAW DOWN
Satrix DIVI Plus Portfolio	STXDIV	-10.27%	5.71%	-10.92%
1investRhodium ETF	ETFRHO	-20.56%	18.24%	-12.51%
Africa Sovereign Bond ETF	ASBI	NULL	NULL	NULL
AMI Big50 ex-SA ETF	AMIB50	NULL	NULL	NULL
CoreShares YSB	CSYSB	NULL	NULL	NULL

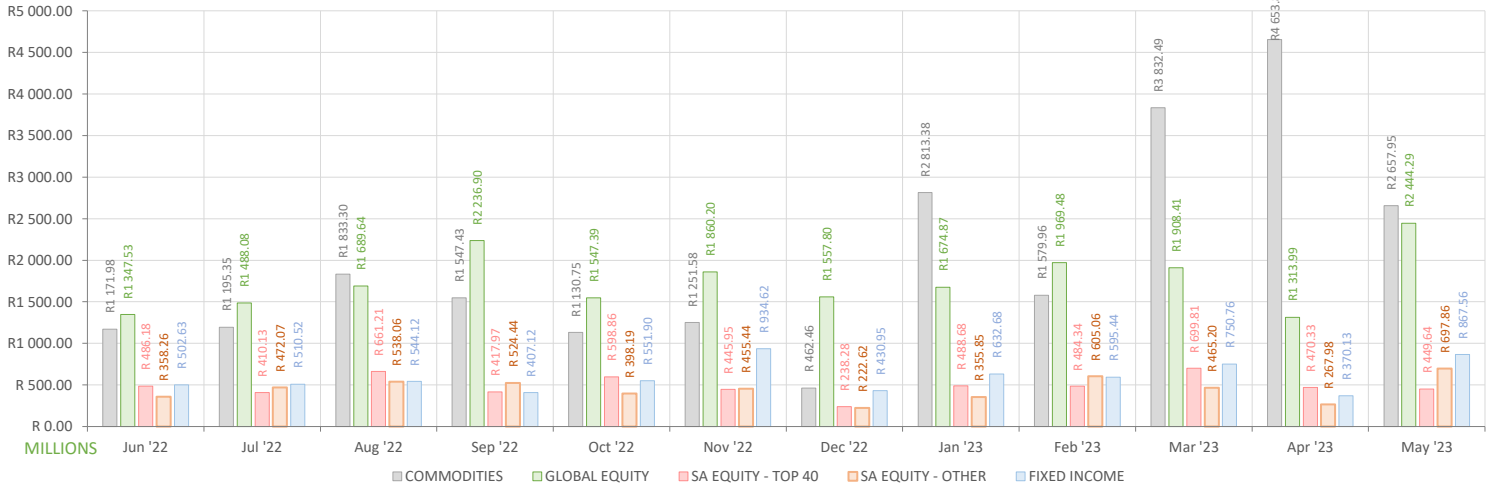
ROLLING 12-MONTH ETF PERFORMANCE | Top & Bottom Five ETFs

TOP FIVE INSTRUMENTS	CODE	TOTAL RETURN	VOLATILITY	MAX DRAW DOWN
1invest S&P500 IT ETF	ETF5IT	51.43%	28.96%	-17.59%
Satrix Nasdaq 100 Prtf	STXNDQ	43.19%	25.50%	-18.20%
Sygnia Itrix Eurostoxx50	SYGEU	41.83%	21.07%	-12.05%
KR Custodial Certificate	KCCGLD	36.49%	15.37%	-3.99%
New Gold Issuer Ltd	GLD	34.92%	15.31%	-3.95%

BOTTOM FIVE INSTRUMENTS	CODE	TOTAL RETURN	VOLATILITY	MAX DRAW DOWN
1investPalladium ETF	ETFPLD	-13.38%	52.20%	-39.24%
NewGold Palladium ETF	NGPLD	-14.93%	43.05%	-38.81%
Satrix DIVI Plus Portfolio	STXDIV	-16.75%	17.74%	-23.68%
Africa Sovereign Bond ETF	ASBI	-22.22%	59.39%	-25.27%
1investRhodium ETF	ETFRHO	-41.74%	51.59%	-54.06%

Total Return is the monthly/annual performance incorporating price performance and immediate reinvestment of dividends. Volatility is the based on daily price standard deviation and presented as a monthly/annual volatility. Maximum draw down measures the worst case return outcome for an investor over the course of the period – based on purchase and subsequent sale timing that results in the largest loss of capital.

MONTHLY VALUE TRADED FOR ALL ETFs



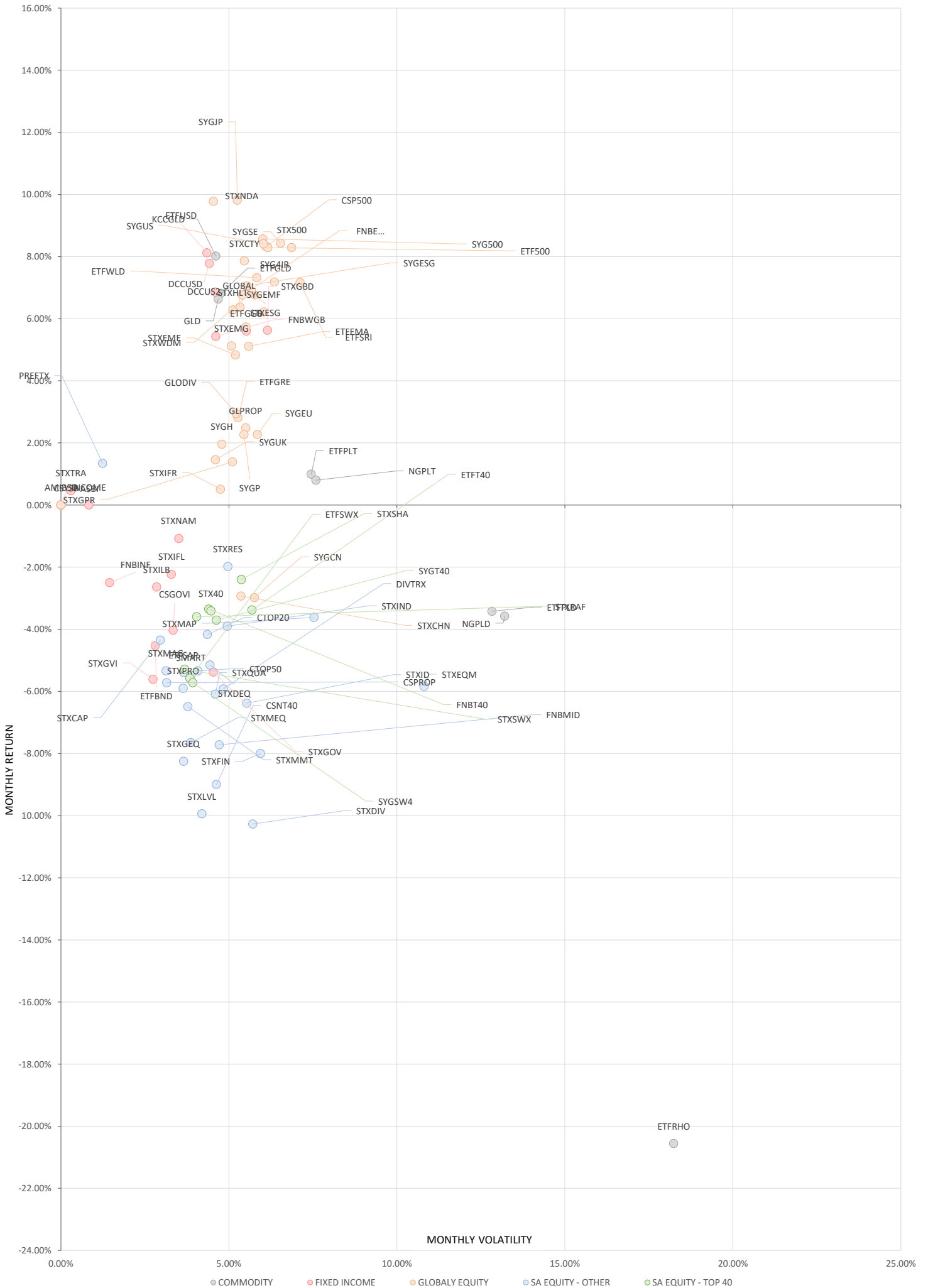
MONTHLY ETF TRADE STATISTICS | Top & Bottom Five Funds

TOP FIVE INSTRUMENTS	CODE	VOLUME	VALUE	TRADES	LIQUIDITY
Satrix MSCI World Feeder	STXWDM	5639220	R426 949 158.50	2363	5.84%
CoreShares TotalWldStock	GLOBAL	19222866	R244 263 381.20	1181	29.65%
CoreShares GOVI	CSGOVI	22958166	R229 528 899.10	865	13.93%
Satrix SA Bond Portfolio	STXGOV	21787537	R168 134 161.00	1292	21.36%
Satrix DIVI Plus Portfolio	STXDIV	35498435	R98 225 905.03	1274	5.28%

BOTTOM FIVE INSTRUMENTS	CODE	VOLUME	VALUE	TRADES	LIQUIDITY
KR Custodial Certificate	KCCGLD	222	R8 525 136.99	17	0.70%
2YR Dollar Custodial Cert	DCCU2	2645	R4 934 961.57	28	1.75%
1invest MSCI world SRI ETF	ETFSRI	3977	R572 909.69	46	2.25%
Africa Sovereign Bond ETF	ASBI	NULL	NULL	NULL	NULL
AMI Big50 ex-SA ETF	AMIB50	NULL	NULL	NULL	NULL

Volume, Value and Trades are the aggregate counts of all trade activity in the ETF for the month on the JSE equity market. This includes central order book and reported trades, but excludes creations and redemptions. Liquidity is the total volume traded expressed as a percentage of the number of listed instruments for the ETF as at the end of the month.

TOTAL RETURN VERSUS VOLATILITY



● COMMODITY ● FIXED INCOME ● GLOBAL EQUITY ● SA EQUITY - OTHER ● SA EQUITY - TOP 40

MONTHLY DETAILED ETF INFORMATION

COMMODITIES

		Prices in Rands				Rands		Value in Mn's		In 000's	in Mn's	
ETF (SORTED ALPHABETICALLY)		START	LOW	HIGH	END	1M%	DISTRIBUTION	MCAP OPE	MCAP CLOSE	VOLUME	VALUE	TRADES
1InvestGold ETF	ETFGLD	361.55	358.54	381.80	378.58	4.71	NULL	489.90	683.34	0.22	83.49	280
1InvestPalladium ETF	ETFPLD	257.76	250.28	298.00	261.91	1.61	NULL	263.44	784.43	0.16	44.24	117
1InvestPlatinum ETF	ETFPLT	189.35	184.91	209.43	192.85	1.85	NULL	5996.15	8295.83	0.84	163.87	291
1InvestRhodium ETF	ETFRHO	1429.25	1200.05	1521.57	1275.00	-10.79	NULL	274.99	289.43	0.02	27.42	249
KR Custodial Certificate	KCCGLD	37961.50	37679.00	40447.00	40249.00	6.03	NULL	1196.36	1268.45	0.00	8.49	16
New Gold Issuer Ltd	GLD	345.96	342.50	365.99	362.20	4.69	NULL	18916.38	19768.13	4.23	1,491.63	1616
New Gold Platinum ETF	NGPLT	187.58	183.58	206.89	190.99	1.82	NULL	9529.06	9473.10	2.43	472.53	490
NewGold Palladium ETF	NGPLD	257.62	254.23	300.41	261.73	1.60	NULL	212.46	242.02	0.38	103.56	201

FIXED INCOME

		Prices in Rands				Rands		Value in Mn's		In 000's	in Mn's	
ETF (SORTED ALPHABETICALLY)		START	LOW	HIGH	END	1M%	DISTRIBUTION	MCAP OPE	MCAP CLOSE	VOLUME	VALUE	TRADES
1Invest G7 Govt Bond ETF	ETFGGB	86.88	83.94	92.12	90.96	4.70	NULL	90.39	156.03	0.73	65.72	697
1Invest SA Bond ETF	ETFBND	100.31	94.42	102.13	96.00	-4.30	NULL	130.71	134.69	0.14	13.25	178
1Invest US Short-Date ETF	ETFUSD	18.63	18.44	20.43	19.98	7.25	NULL	77.15	87.68	0.92	18.24	132
2YR Dollar Custodial Cert	DCCUS2	1807.75	1799.50	1940.70	1932.30	6.89	NULL	272.97	291.78	0.00	4.92	27
Africa Sovereign Bond ETF	ASBI	NULL	NULL	NULL	NULL	NULL	NULL	NULL	NULL	NULL	NULL	NULL
CoreShares GOVI	CSGOVI	10.21	9.62	10.33	9.77	-4.31	NULL	1572.79	1610.04	22.68	226.76	840
CoreShares YSB	CSYSB	NULL	9.86	9.89	9.99	NULL	NULL	NULL	259.63	0.03	0.28	5
CSI Actively Managed ETF	INCOME	NULL	10.02	10.11	10.04	NULL	NULL	NULL	509.71	0.79	7.94	135
Dollar Custodial Cert	DCCUSD	1753.95	1749.49	1869.00	1855.80	5.81	NULL	613.88	649.53	0.01	26.82	43
FNB GOV INF LNKD BND ETF	FNBNF	22.76	21.90	22.86	22.19	-2.50	NULL	403.65	393.54	0.18	4.01	138
FNB WORLD GOVBOND ETF	FNWBGB	7.46	7.30	8.29	7.85	5.23	0.03	277.02	291.51	1.86	14.05	323
Satrix Global Bond ETF	STXGBD	41.04	40.20	44.50	43.05	4.90	0.34	300.46	319.48	0.30	12.69	168
Satrix GOVI ETF	STXGVI	74.59	69.89	75.23	70.65	-5.28	NULL	1918.02	1922.68	2.89	209.91	1005
Satrix ILBI ETF	STXIFL	85.10	81.36	86.84	83.10	-2.35	0.17	88.50	86.42	0.02	1.74	74
Satrix ILBI Portfolio	STXILB	7.20	6.97	7.26	7.01	-2.64	NULL	417.71	406.69	2.24	15.89	161
Satrix Namibia Bond ETF	STXNAM	18.46	17.94	18.77	18.28	-0.98	NULL	399.70	405.86	0.68	12.39	92
Satrix SA Bond Portfolio	STXGOV	7.92	7.47	8.05	7.56	-4.55	NULL	673.05	770.97	21.36	164.76	1173
Satrix TRACI 3 Month ETF	STXTRA	30.65	30.54	30.87	30.79	0.46	NULL	266.06	254.96	1.43	43.82	195

GLOBAL EQUITY

		Prices in Rands				Rands		Value in Mn's		In 000's	in Mn's	
ETF (SORTED ALPHABETICALLY)		START	LOW	HIGH	END	1M%	DISTRIBUTION	MCAP OPE	MCAP CLOSE	VOLUME	VALUE	TRADES
1Invest Global REIT ETF	ETFGRE	20.98	20.00	23.80	21.92	4.48	NULL	48.87	51.06	0.05	1.03	162
1Invest MSCI EM Asia ETF	ETFEMA	27.86	27.57	31.13	29.44	5.67	NULL	77.03	93.18	0.47	13.55	186
1Invest MSCI World ETF	ETFWLD	72.58	71.15	80.41	77.99	7.45	NULL	139.28	303.30	0.53	40.99	351
1Invest MSCI world SRI ETF	ETFSRI	138.93	138.57	154.51	149.17	7.37	NULL	24.58	26.39	0.00	0.55	44
1Invest S&P500 Index ETF	ETF500	391.71	379.02	437.76	425.68	8.67	NULL	145.10	159.81	0.01	5.10	243
1Invest S&P500 IT ETF	ETF5IT	17.33	16.75	22.50	20.64	19.10	NULL	596.81	705.74	2.12	39.96	944
AMI Big50 ex-SA ETF	AMIB50	NULL	NULL	NULL	NULL	NULL	NULL	NULL	NULL	NULL	NULL	NULL
CoreShares Global Prop	GLPROP	41.57	40.50	44.43	43.31	4.19	NULL	541.91	500.08	1.48	63.06	942
CoreShares GlobalDivTrax	GLDIV	18.61	18.34	19.81	19.24	3.39	NULL	1323.58	1429.95	4.84	92.75	814
CoreShares S&P 500	CSP500	76.40	74.39	84.46	83.03	8.68	NULL	1746.53	1898.09	0.35	27.64	790
CoreShares TotalWldStock	GLOBAL	12.19	11.72	13.38	13.03	6.89	NULL	537.10	844.87	18.98	241.23	1065
FNB GLOBAL 1200 FOF ETF	FNBEQF	73.86	72.30	83.53	78.91	6.84	0.22	1570.26	1634.23	0.33	25.67	565
Satrix Global IFR ETF	STXIFR	56.72	55.08	60.39	57.27	0.97	NULL	241.01	243.35	0.27	15.26	183
Satrix Healthcare Inn ETF	STXHIL	68.79	67.72	75.50	72.56	5.48	NULL	53.44	56.37	0.05	3.32	100
Satrix MSCI China ETF	STXCHN	40.18	38.51	42.50	39.15	-2.56	NULL	1203.66	1266.76	3.57	149.26	1284
Satrix MSCI EM ESG ETF	STXEME	45.94	45.29	50.18	48.80	6.23	NULL	133.43	141.74	0.16	7.56	93
Satrix MSCI EMG Markets	STXEMG	53.60	52.98	58.00	56.63	5.65	NULL	2169.34	2303.30	1.04	58.15	832
Satrix MSCI India ETF	STXNDA	64.88	63.70	74.50	70.75	9.05	NULL	194.10	218.74	0.25	17.14	334
Satrix MSCI World ESG ETF	STXESG	63.50	61.95	69.91	68.08	7.21	NULL	184.67	197.99	0.06	3.85	131
Satrix MSCI World Feeder	STXWDM	72.76	71.50	81.73	77.89	7.05	NULL	6900.24	7519.16	5.47	414.45	2081
Satrix Nasdaq 100 Prtf	STXNDQ	136.90	133.20	162.70	159.26	16.33	NULL	3302.15	3857.42	0.83	122.42	2134
Satrix Reitway Gbl Prop	STXGPR	69.23	67.57	71.64	70.59	1.96	0.78	56.42	57.53	0.27	18.61	28
Satrix S&P 500 Feeder	STX500	78.56	76.11	87.60	85.42	8.73	NULL	3643.15	3978.36	1.77	144.80	2193
Satrix Smart City Inf ETF	STXCTY	58.10	57.96	65.00	62.61	7.76	NULL	17.14	18.47	0.01	0.77	44
Sygnia Itrix 4Ind Rev Gb	SYG4IR	39.10	38.56	43.60	42.55	8.82	NULL	2016.93	2194.90	1.71	70.29	875
Sygnia Itrix Eurostoxx50	SYGEU	87.48	85.93	93.78	90.07	2.96	NULL	3356.89	3060.14	1.21	110.14	1439
Sygnia Itrix FTSE100	SYGUK	180.08	177.01	189.93	183.93	2.14	NULL	1358.57	1379.85	0.09	15.87	311
Sygnia Itrix Gbl Pro ETF	SYGP	43.68	42.85	46.59	45.41	3.96	NULL	525.05	545.85	0.27	12.26	203
Sygnia Itrix MSCI EM 50	SYGEMF	15.10	14.96	16.79	16.22	7.42	NULL	2203.44	2366.88	0.47	7.43	142
Sygnia Itrix MSCI Japan	SYGJP	16.92	16.75	18.99	18.57	9.75	NULL	990.76	1058.16	2.63	48.48	574
Sygnia Itrix MSCI US	SYGUS	70.80	69.02	78.44	77.10	8.90	NULL	6486.98	6879.17	2.49	187.32	1197
Sygnia Itrix MSCI World	SYGWD	51.90	50.50	56.20	55.20	6.36	NULL	13051.41	13844.36	2.42	130.61	1492
Sygnia Itrix New China Sectors ETF	SYGCN	32.32	31.60	34.00	31.86	-1.42	NULL	395.97	390.33	1.00	32.81	241
Sygnia Itrix S&P 500 ETF	SYG500	76.73	75.00	85.08	83.63	8.99	NULL	3949.04	4290.90	1.44	116.49	881
Sygnia Itrix SOL H150	SYGH	30.91	30.39	32.51	31.25	1.10	NULL	573.95	508.39	3.61	113.25	258
Sygnia Itrix SP Glob ESG	SYGESG	43.64	43.00	48.01	47.02	7.75	NULL	1437.28	1548.60	0.40	18.40	139
Sygnia Itrix SUS Economy	SYGSE	51.86	50.88	58.17	56.85	9.62	NULL	156.70	171.78	0.03	1.40	50

MONTHLY DETAILED ETF INFORMATION

SA EQUITY | OTHER

		Prices in Rands				Rands		Value in Mn's		In 000's	in Mn's	
ETF (SORTED ALPHABETICALLY)		START	LOW	HIGH	END	1M%	DISTRIBUTION	MCAP OPE	MCAP CLOSE	VOLUME	VALUE	TRADES
Invest SA Property ETF	ETFSAP	31.48	27.94	32.00	30.01	-4.67	NULL	377.70	473.95	0.20	6.08	311
CoreShares DivTrax	DIVTRX	22.25	20.99	22.92	21.14	-4.99	NULL	170.56	187.42	1.70	37.25	248
CoreShares Next 40	CSNT40	10.05	9.17	10.12	9.20	-8.46	NULL	10.06	88.10	11.13	107.24	750
CoreShares SProp	CSPROP	10.80	10.14	10.82	10.22	-5.37	NULL	430.59	419.73	2.52	26.66	331
CoreShares SciBeta M-FI	SMART	51.35	49.45	51.68	49.12	-4.34	NULL	115.97	106.02	0.04	2.17	67
CoreShares Wealth Top 20	CTOP20	9.97	9.58	10.21	9.66	-3.11	NULL	9.98	91.78	11.22	111.59	820
CORESHARESTOP50	CTOP50	31.31	29.92	31.90	29.97	-4.28	NULL	1417.34	1356.68	0.48	15.01	281
FNB MIDCAP ETF	FNB MID	7.75	7.09	7.89	7.17	-7.48	NULL	568.48	522.35	2.05	15.49	469
Satrix Capped ALL Share	STXCAP	39.27	37.27	40.15	37.35	-4.89	0.57	470.43	327.91	0.81	31.58	162
Satrix Defensive Eq ETF	STXDEQ	10.25	9.80	10.26	9.77	-4.68	NULL	7.37	7.02	0.01	0.09	11
Satrix DIVI Plus Portfolio	STXDIV	2.90	2.56	2.95	2.62	-9.66	NULL	2005.03	1761.66	34.69	95.88	1162
Satrix Eq Momentum ETF	STXEQM	42.65	40.47	42.87	40.48	-5.09	NULL	194.79	184.88	0.13	5.44	66
Satrix FINI Portfolio	STXFIN	15.85	14.63	15.89	14.72	-7.13	NULL	1051.44	970.59	2.00	30.63	590
Satrix GIVI Top 50 ETF	STXT50	49.86	47.58	50.16	47.34	-5.05	NULL	59.50	56.49	0.07	3.51	78
Satrix High Grwt Eq ETF	STXGEQ	10.44	9.58	10.51	9.67	-7.38	NULL	14.13	13.08	0.07	0.67	30
Satrix I & D ETF	STXID	29.62	27.85	29.36	28.17	-4.90	NULL	16.02	15.24	0.01	0.40	23
Satrix INDI Portfolio	STXIND	103.55	100.80	107.63	100.41	-3.03	NULL	2230.31	2162.68	0.28	28.90	534
Satrix Low Vol ETF	STXLVL	10.40	9.58	10.42	9.42	-9.42	NULL	128.46	116.36	0.01	0.15	28
Satrix MAPPS Growth ETF	STXMAG	29.07	27.61	29.15	27.65	-4.88	NULL	58.33	32.35	0.01	0.41	37
Satrix MAPPS Protect ETF	STXMAP	48.65	46.79	49.45	47.17	-3.04	NULL	71.62	43.50	0.41	19.33	148
Satrix Moderate Eq ETF	STXMEQ	10.64	10.04	10.67	9.90	-6.95	NULL	9.42	8.77	0.00	0.03	17
Satrix Momentum Portfolio	STXMMT	12.52	11.75	12.74	11.82	-5.59	NULL	35.15	33.19	0.08	0.96	88
Satrix Property Portfolio	STXPRO	9.14	8.46	9.22	8.61	-5.80	NULL	334.26	314.88	1.69	14.65	392
Satrix Quality SA Port	STXQUA	7.48	7.05	7.65	7.09	-5.21	NULL	53.38	50.60	0.25	1.84	106
Satrix RESI Portfolio	STXRES	72.11	69.44	77.21	71.33	-1.08	NULL	1102.42	1061.96	1.00	72.36	740
Satrix Value Equity ETF	STXVEQ	13.19	12.26	13.36	12.40	-5.99	NULL	307.37	288.96	1.02	13.20	163

SA EQUITY | TOP 40

		Prices in Rands				Rands		Value in Mn's		In 000's	in Mn's	
ETF (SORTED ALPHABETICALLY)		START	LOW	HIGH	END	1M%	DISTRIBUTION	MCAP OPE	MCAP CLOSE	VOLUME	VALUE	TRADES
Invest SWIX 40 ETF	ETFSWX	13.29	12.70	13.87	12.70	-4.44	NULL	1587.73	1517.24	0.14	1.89	94
Invest TOP 40 ETF	ETFT40	72.34	70.00	74.87	70.52	-2.52	NULL	635.67	619.68	0.24	17.10	207
FNB TOP 40 ETF	FNB T40	72.48	69.41	76.64	70.70	-2.46	NULL	2475.32	2414.53	0.84	60.75	494
Satrix 40 Portfolio	STX40	72.61	70.32	74.77	70.72	-2.60	NULL	13671.88	13224.07	3.92	285.00	2286
Satrix RAFI 40 Portfolio	STXRAF	23.04	22.11	23.56	22.23	-3.52	0.24	1338.10	1282.17	1.03	23.24	319
Satrix Shariah T40 ETF	STXSHA	4.11	3.99	4.34	4.06	-1.22	NULL	50.80	50.18	0.18	0.73	82
Satrix SWIX Top 40 Portfolio	STXSWX	13.32	12.52	13.49	12.72	-4.50	NULL	419.82	400.91	0.26	3.41	154
Sygnia Itrix SWIX40 ETF	SYGSW4	13.29	12.58	13.47	12.69	-4.51	NULL	184.62	176.29	0.35	4.65	55
Sygnia Itrix Top 40 ETF	SYGT40	72.87	71.03	74.35	70.83	-2.80	NULL	511.90	447.98	0.27	19.73	181

During March we saw 15 of Absa's ETFs being acquired by Satrix. There were therefore 15 name and alpha code changes as a result.

Old Alpha Code	New Alpha Code	Old Name	New Name
GIVISA	STXT50	NewFunds S&P GIVI SA Top 50 Index ETF	Satrix S&P GIVI South Africa Top 50 ETF
MAPPSP	STXMAG	NewFunds MAPPS Growth Index ETF	Satrix Multi Asset Passive Portfolio Solutions Growth ETF
NFEMOM	STXEQM	NewFunds Equity Momentum ETF	Satrix Equity Momentum ETF
MAPPSP	STXMAP	NewFunds MAPPS Protect Index ETF	Satrix Multi Asset Passive Portfolios Solutions Protect ETF
NFEVOL	STXLVL	NewFunds Low Volatility ETF	Satrix Low Volatility ETF
NDFEFQ	STXDEQ	NewFunds Volatility Managed Defensive Equity ETF	Satrix Volatility Managed SA Defensive Equity ETF
NFEMOD	STXMEQ	NewFunds Volatility Managed Moderate Equity ETF	Satrix Volatility Managed SA Moderate Equity ETF
NFEHGE	STXGEQ	NewFunds Volatility Managed SA High Growth ETF	Satrix Volatility Managed SA High Growth Equity ETF
NFEVAL	STXVEQ	NewFunds Value Equity ETF	Satrix Value Equity ETF
NFSH40	STXSHA	NewFunds Shariah Top 40 SA Index ETF	Satrix Shariah Top 40 ETF
NFILBI	STXIFL	NewFunds ILBI ETF	Satrix ILBI ETF
NFTRCI	STXTRA	NewFunds TRACI 3 Month ETF	Satrix TRACI 3 Month ETF
NFGOVI	STXGVI	NewFunds GOVI ETF	Satrix GOVI ETF
NFNAMB	STXNAM	NewFunds S&P Namibia Bond ETF	Satrix S&P Namibia Bond ETF
NEWPRP	STXGPR	NewFunds Reitway Global Property ETF	Satrix Reitway Global Property ETF

The information, data and compilations, or any part thereof, which make up the JSE ETF Factsheet ("Data") is being provided to you strictly for informational purposes. JSE Limited ("JSE") reserves the right to withdraw, modify, or replace the Data (or any part thereof) at any time.

To the extent allowed by law, JSE does not (expressly, tacitly or impliedly) guarantee or warrant the availability, sequence, accuracy, completeness, reliability or any other aspect of any of the Data or that the Data contained therein is up to date. To the extent allowed by law, neither the JSE nor any of its directors, officers, employees, contractors, agents or representatives are liable to any way to the reader/user or to any other natural or juristic person (Person) for any loss or damage as a result of any errors contained in the specification, for any loss arising from use of, or reliance on the Data in this JSE ETF Factsheet or any actions taken or not taken by or behalf of any Person in reliance on any Data in this JSE ETF Factsheet. You may not copy, reproduce, redistribute, alter or transmit any Data without the prior written consent of the JSE.

The Johannesburg Stock Exchange prides itself on a 130 year history as an effective, reputable trading platform. We are currently ranked the 19th largest stock exchange in the world based on market capitalization, and the largest exchange on the African continent. The JSE offers secure and efficient primary and secondary capital markets across a diverse range of asset classes which include equities, commodities, currencies, interest rates and bonds. We are the exchange of choice for local and international investors looking for investment opportunities across leading capital markets in South Africa and the broader African continent.

The JSE's achievements escalate through to this year's 20th anniversary of the first ETF listing on the local Exchange Traded Fund (ETF) market. Today, the ETF market capitalization is close to R90bn with over 70 listed ETFs on the JSE Main Board.

Our Primary Markets Team is a key access point for existing and/or potential issuers to gain exposure to local and international investor capital. The team focuses on listing companies and instruments on the Equity (Main Board and AltX) or Debt Market and aids in product development.

Contact the team: listingontheJSE@jse.co.za

Our Information Services Team works to deliver world class market data to our clients. This data can often be customized on request providing our clients with the exact Intel required to make business and portfolios decisions.

We offer live, delayed, end of day, reference and historical market data for:

- Equities
- Indices
- Equity Derivatives
- Commodity Derivatives
- Commodity Derivatives
- Currency Derivatives
- Interest Rate Derivatives
- Bonds
- Market Announcements (SENS)

We have nearly 170 indices across a wide variety of methodologies and investment criteria.

Our partnership with FTSE Russell includes:

- FTSE/JSE All Share
- FTSE/JSE Top 40
- FTSE/JSE ESG
- FTSE/JSE Factor Indices
- FTSE/JSE Shariah
- FTSE/JSE RAFI and many more

We develop customised indices to suit your needs.

- Our other service offerings include:
- Bond ETP data
- Tick data
- Corporate Actions
- Business Intelligence Reports
- Valuations

Contact the team: mdclients@jse.co.za