

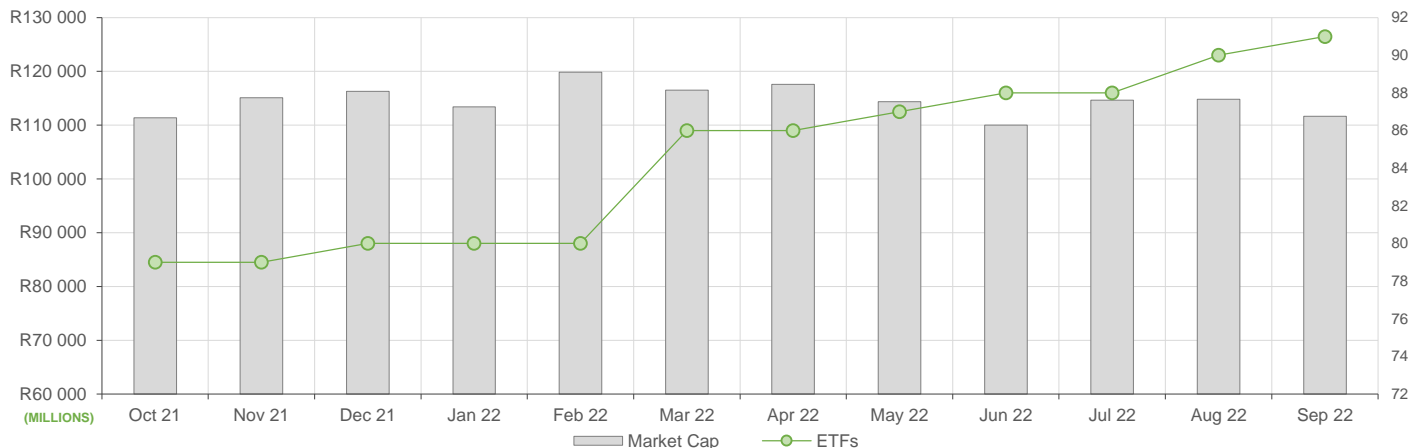
September showed decreased ETF activity compared to August, here is what we have seen:

- ETF Market Capitalization showed a month-on-month decrease. ETF unit redemptions were largely reflected in the commodity ETFs and global equity ETFs.
- Month-on-month ETF value traded was slightly lower compared to August's activity, reflecting roughly R5.1bn in total value traded during the month.
- Month-on-Month ETF returns showed positive performances across almost all ETFs

## NEW LISTINGS AND DELISTINGS

ETF	CODE	ISSUER	EVENT	DATE
INVEST US SHORT-DATE ETF	ETFUSD	STANLIB COLLECTIVE INVESTMENTS	Listing	08-Sep-22

## MARKET CAPITALISATION ANALYSIS | Total Industry



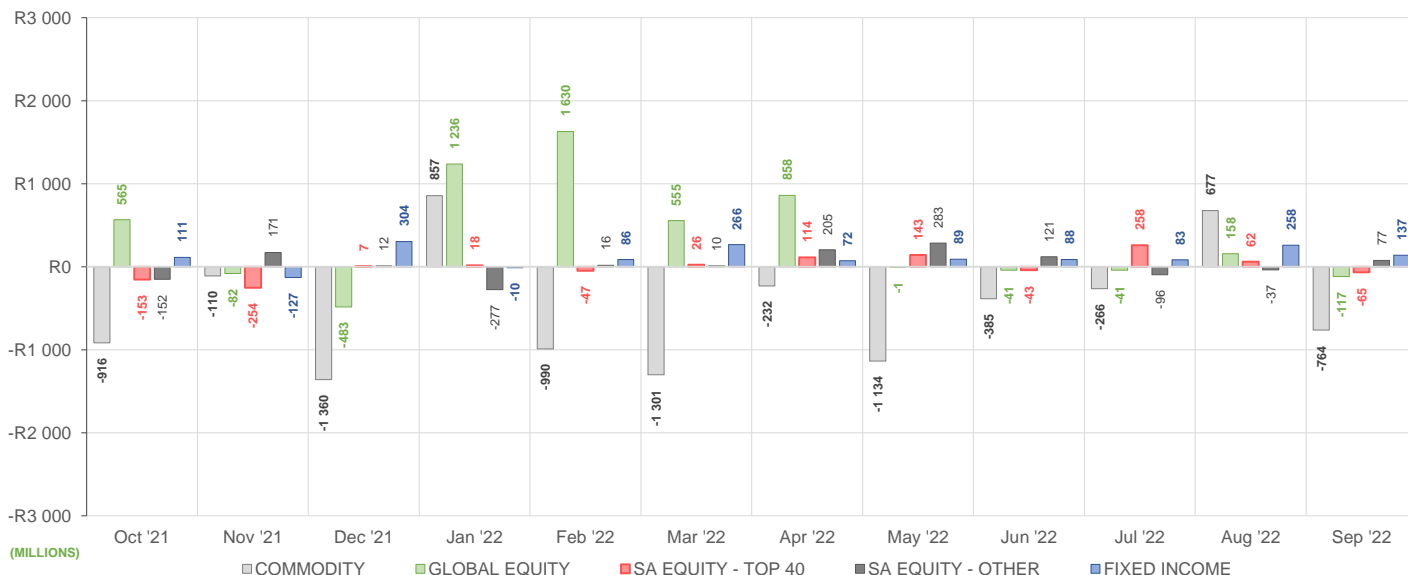
## NET DAILY EXCHANGE CREATIONS AND REDEMPTIONS | Top & Bottom Five ETFs

TOP 5 INSTRUMENTS	CODE	TOTAL DAILY CREATIONS	TOTAL DAILY REDEMPTIONS	NET MONTHLY CREATIONS
Sygnia Itrix FTSE100	SYGUK	R255 111 802	---	R255 111 802
Sygnia Itrix S&P 500 ETF	SYG500	R68 835 000	---	R68 835 000
Satrix 40 Portfolio	STX40	R65 315 000	---	R65 315 000
NEWFUNDS GOVI ETF	NFGOVI	R56 485 000	---	R56 485 000
Satrix S&P 500 Feeder	STX500	R48 662 500	---	R48 662 500

BOTTOM 5 INSTRUMENTS	CODE	TOTAL DAILY CREATIONS	TOTAL DAILY REDEMPTIONS	NET MONTHLY CREATIONS
Satrix MSCI EMG Markets	STXEMG	R44 156 500	-R128 807 000	-R84 650 500
New Gold Issuer Ltd	GLD	---	-R221 151 000	-R221 151 000
New Gold Platinum ETF	NGPLT	---	-R240 020 000	-R240 020 000
1InvestGold ETF	ETFGLD	---	-R318 894 500	-R318 894 500
Satrix MSCI World Feeder	STXWDM	R99 740 000	-R567 191 500	-R467 451 500

Considers the daily update to total number of issued units listed on the exchange over the calendar month, with Creations representing a day-on-day increase in total number of listed units, and Redemptions representing a decrease. An average day-on-day price is used to estimate the ZAR value of each net daily movement. No secondary market transactions are considered.

## NET MONTHLY EXCHANGE CREATIONS AND REDEMPTIONS



## MONTHLY ETF PERFORMANCE | Top & Bottom Five ETFs

TOP 5 INSTRUMENTS	CODE	TOTAL RETURN	VOLATILITY	MAX DRAW DOWN
NewGold Palladium ETF	NGPLD	14.97%	9.70%	-3.32%
1investPalladium ETF	ETFPLD	14.58%	10.83%	-3.64%
1investPlatinum ETF	ETFPLT	9.60%	7.00%	-6.37%
New Gold Platinum ETF	NGPLT	9.22%	6.97%	-6.95%
1investRhodium ETF	ETFRHO	6.22%	10.48%	-8.36%

BOTTOM 5 INSTRUMENTS	CODE	TOTAL RETURN	VOLATILITY	MAX DRAW DOWN
Satrix MSCI China ETF	STXCHN	-7.47%	4.75%	-7.93%
1INVEST MSCI EM ASIA ETF	ETFEMA	-7.56%	6.50%	-7.72%
Sygnia Itrix Gbl Pro ETF	SYGP	-7.57%	5.70%	-11.78%
Sygnia Itrix MSCI EM 50	SYGEMF	-8.25%	4.58%	-9.10%
Africa Sovereign Bond ETF	ASBI	0.00%	0.00%	0.00%

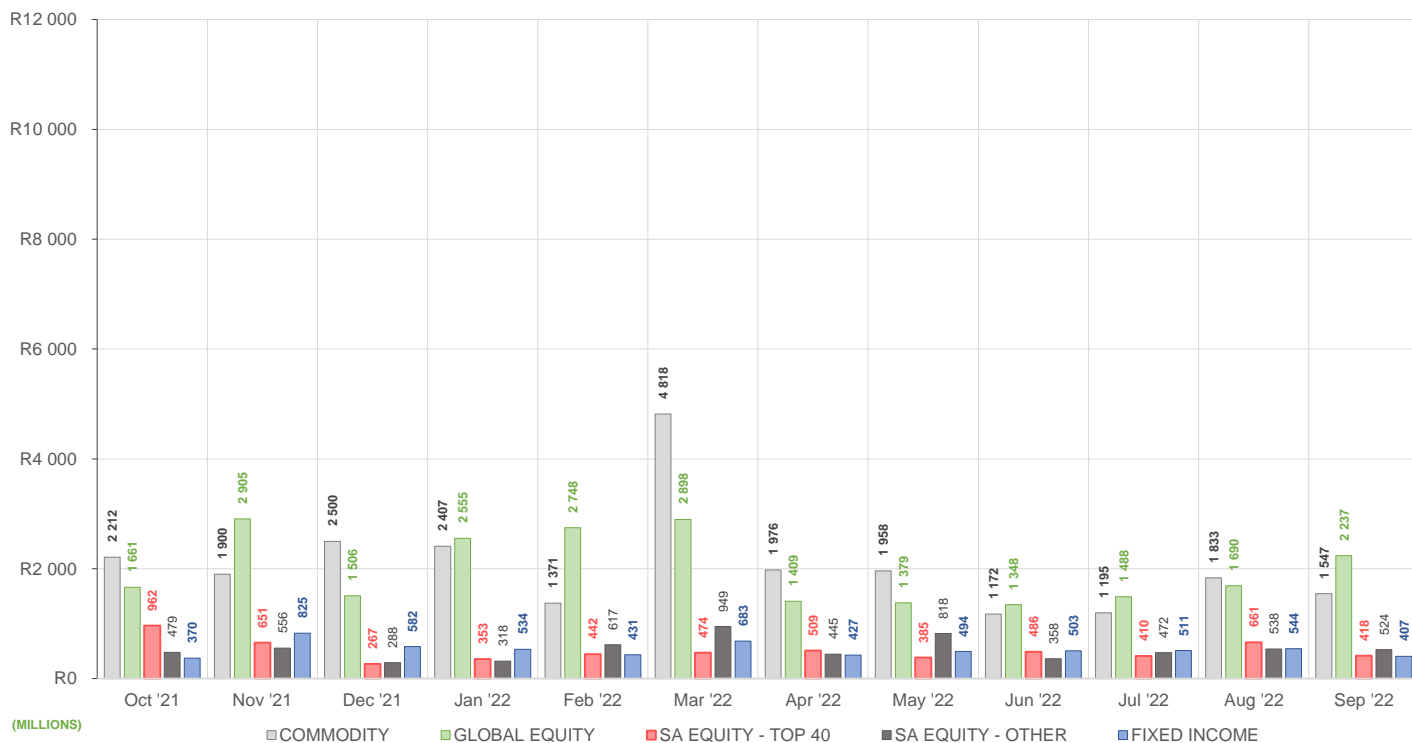
## ROLLING 12-MONTH ETF PERFORMANCE | Top & Bottom Five ETFs

TOP 5 INSTRUMENTS	CODE	TOTAL RETURN	VOLATILITY	MAX DRAW DOWN
NewGold Palladium ETF	NGPLD	39.13%	53.56%	-38.19%
1investPalladium ETF	ETFPLD	38.54%	52.62%	-38.10%
CoreShares PrefTrax	PREFTX	37.37%	20.26%	-12.24%
Satrix DIVI Plus Portfolio	STXDIV	19.71%	20.27%	-19.18%
Satrix MSCI India ETF	STXNDA	16.25%	15.66%	-14.09%

BOTTOM 5 INSTRUMENTS	CODE	TOTAL RETURN	VOLATILITY	MAX DRAW DOWN
Sygnia Itrix Eurostoxx50	SYGEU	-17.88%	22.30%	-29.06%
Satrix MSCI China ETF	STXCHN	-22.54%	30.83%	-37.89%
Sygnia Itrix MSCI EM 50	SYGEMF	-22.99%	235.42%	-82.86%
Sygnia Itrix 4Ind Rev Gb	SYG4IR	-23.62%	26.90%	-39.02%
AMI Big50 ex-SA ETF	AMIB50	-27.23%	111.75%	-45.25%

Total Return is the monthly/annual performance incorporating price performance and immediate reinvestment of dividends. Volatility is the based on daily price standard deviation and presented as a monthly/annual volatility. Maximum draw down measures the worst case return outcome for an investor over the course of the period – based on purchase and subsequent sale timing that results in the largest loss of capital.

## MONTHLY VALUE TRADED FOR ALL ETFs



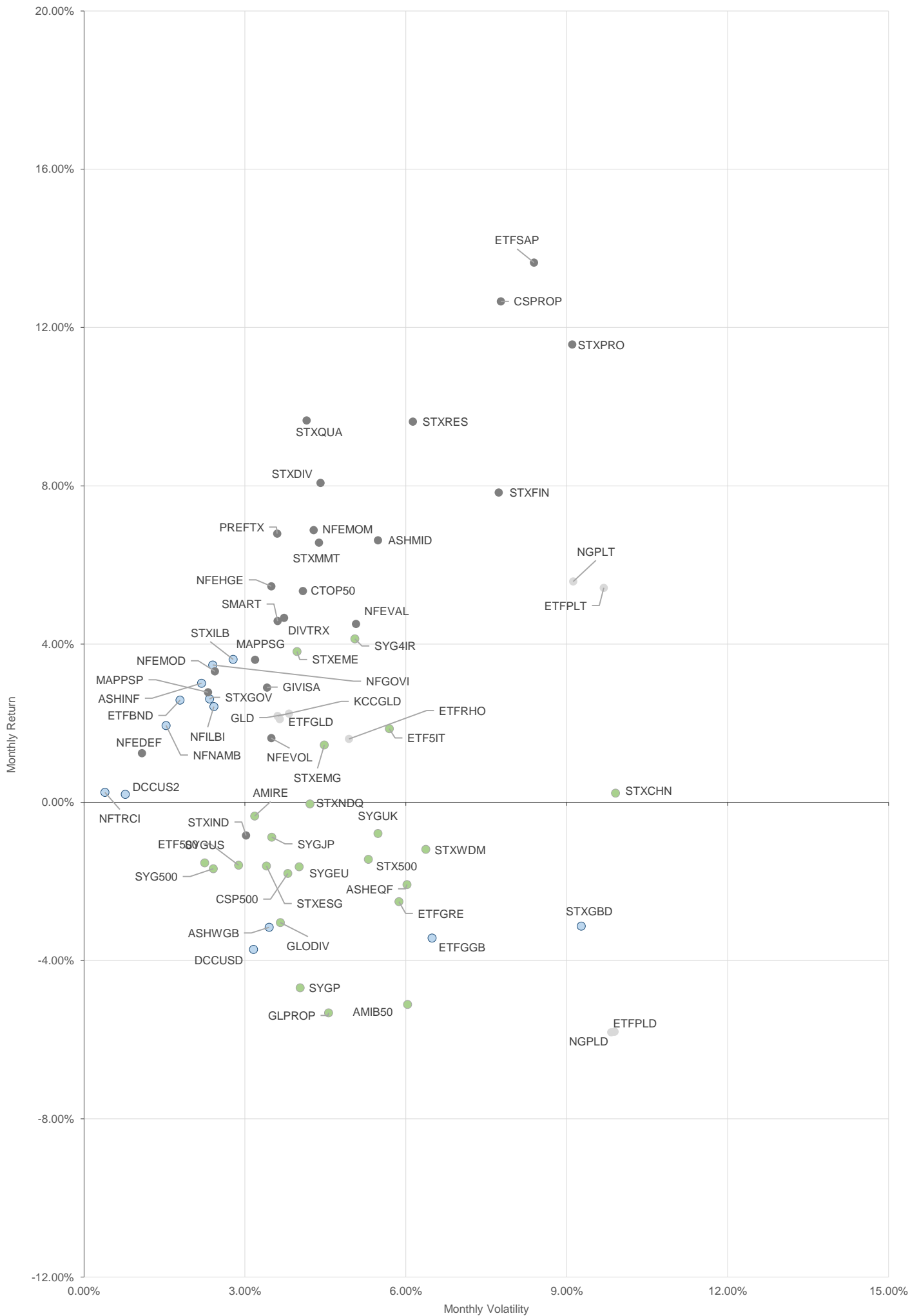
## MONTHLY ETF TRADE STATISTICS | Top & Bottom Five Funds

TOP 5 INSTRUMENTS	CODE	VOLUME	VALUE	TRADES	LIQUIDITY
Satrix MSCI World Feeder	STXWDM	13 377 728	R846 970 346.46	1 131	15.44%
Sygnia Itrix MSCI World	SYGWD	5 232 504	R234 788 476.00	1 052	2.12%
Satrix FINI Portfolio	STXFIN	4 941 437	R71 253 884.26	510	7.32%
FNB MIDCAP ETF	FNB MID	5 071 249	R37 610 005.40	326	6.31%
Satrix DIVI Plus Portfolio	STXDIV	11 032 037	R34 463 973.10	879	1.59%

BOTTOM 5 INSTRUMENTS	CODE	VOLUME	VALUE	TRADES	LIQUIDITY
1investRhodium ETF	ETFRHO	7 289	R16 025 454.98	232	4.23%
1INVEST S&P500 INDEX ETF	ETF500	7 977	R2 775 712.62	154	2.28%
KR Custodial Certificate	KCCGLD	54	R1 635 225.00	4	0.17%
1invest G7 Govt Bond ETF	ETFGGB	5 392	R429 932.21	63	1.15%
NF VM Defensive EquityETF	NFEDEF	1 985	R20 794.51	13	0.04%

Volume, Value and Trades are the aggregate counts of all trade activity in the ETF for the month on the JSE equity market. This includes central order book and reported trades, but excludes creations and redemptions. Liquidity is the total volume traded expressed as a percentage of the number of listed instruments for the ETF as at the end of the month.

# TOTAL RETURN VERSUS VOLATILITY



● SA EQUITY - TOP 40 ● FIXED INCOME ● SA EQUITY - OTHER ● COMMODITY ● GLOBAL EQUITY



# MONTHLY DETAILED ETF INFORMATION

## COMMODITIES

		Prices in Rands				In Rands		Values in Mn's		in 000's   in Mn's		
INVEST ETF ISSUER (RF) LIMITED	CODE	START	LOW	HIGH	END	1M %	DISTRIBUTION	MCAP OPEN	MCAP CLOSE	VOL	VALUE	TRADES
1InvestGold ETF	ETFGLD	284.88	275.98	300.00	293.38	2.98	--	1186.53	899.21	1.25	358.79	158.00
1InvestPalladium ETF	ETFPLD	335.43	333.50	385.42	384.33	14.58	--	189.20	216.78	.03	9.66	67.00
1InvestPlatinum ETF	ETFPLT	138.43	140.02	160.77	151.72	9.6	--	1656.31	1800.16	.18	27.3	88.00
1InvestRhodium ETF	ETFRHO	2080.56	2000.00	2400.00	2209.90	6.22	--	363.90	381.00	.01	16.03	232.00

FIRSTRAND BANK LIMITED	CODE	START	LOW	HIGH	END	1M %	DISTRIBUTION	MCAP OPEN	MCAP CLOSE	VOL	VALUE	TRADES
KR Custodial Certificate	KCCGLD	29943.00	30165.00	30398.00	30839.50	2.99	--	943.65	971.91	0.00	1.64	4.00

NEWGOLD ISSUER (RF) LIMITED	CODE	START	LOW	HIGH	END	1M %	DISTRIBUTION	MCAP OPEN	MCAP CLOSE	VOL	VALUE	TRADES
New Gold Issuer Ltd	GLD	272.81	272.06	284.97	280.65	2.87	--	15462.31	15682.14	3.04	837.93	1735.00
New Gold Platinum ETF	NGPLT	137.91	139.86	161.03	150.62	9.22	--	5419.86	5678.37	1.37	208.81	166.00
NewGold Palladium ETF	NGPLD	334.57	334.44	382.66	384.64	14.97	--	342.83	432.60	.22	78.89	150.00

## SA & GLOBAL FIXED INCOME

		Prices in Rands				In Rands		Values in Mn's		in 000's   in Mn's		
STANLIB COLLECTIVE INVESTMEN' CODE	CODE	START	LOW	HIGH	END	1M %	DISTRIBUTION	MCAP OPEN	MCAP CLOSE	VOL	VALUE	TRADES
1Invest G7 Govt Bond ETF	ETFGGB	79.79	78.49	81.10	79.78	-0.01	--	37.45	37.45	.01	.43	63.00
1Invest SA Bond ETF	ETFBND	86.05	83.60	88.00	84.48	-1.82	--	94.66	101.38	.15	12.53	91.00

ASHBURTON MANAGEMENT COMP CODE	CODE	START	LOW	HIGH	END	1M %	DISTRIBUTION	MCAP OPEN	MCAP CLOSE	VOL	VALUE	TRADES
FNB WORLD GOVBOND ETF	FNBWGB	6.87	6.70	7.10	6.88	.15	--	138.33	172.93	4.11	28.51	511.00
FNB GOV INF LNKD BND ETF	FNBINF	22.97	22.30	23.17	22.50	-2.05	--	407.37	399.04	.48	10.85	119.00

FIRSTRAND BANK LIMITED	CODE	START	LOW	HIGH	END	1M %	DISTRIBUTION	MCAP OPEN	MCAP CLOSE	VOL	VALUE	TRADES
2YR Dollar Custodial Cert	DCCUS2	1667.45	1643.80	1732.90	1723.35	3.35	--	251.78	260.23	.02	42.38	47.00
Dollar Custodial Cert	DCCUSD	1628.65	1613.10	1658.80	1661.10	1.99	--	219.87	224.25	.04	59.27	68.00

NEWFUNDS COLLECTIVE INVESTM CODE	CODE	START	LOW	HIGH	END	1M %	DISTRIBUTION	MCAP OPEN	MCAP CLOSE	VOL	VALUE	TRADES
NEWFUNDS TRACI 3-M ETF	NFTRCI	29.51	29.41	29.71	29.61	.34	--	245.43	246.26	.61	17.95	152.00
NEWFUNDS GOVI ETF	NFGOVI	75.54	73.88	78.01	74.45	-1.44	--	3393.19	3400.07	1.66	125.98	1632.00
NEWFUNDS ILBI ETF	NFILBI	84.20	81.86	84.66	82.25	-2.32	0.22	117.88	115.15	.06	5.29	82.00
NFNAM 10 Bonds	NFNAMB	17.11	16.95	17.47	16.97	-0.82	--	349.60	346.74	.02	.32	19.00

Satrix Managers (RF) (Pty) Ltd	CODE	START	LOW	HIGH	END	1M %	DISTRIBUTION	MCAP OPEN	MCAP CLOSE	VOL	VALUE	TRADES
Satrix ILBI Portfolio	STXILB	7.28	7.00	7.30	7.05	-3.16	--	626.19	606.41	2.98	21.37	393.00
Satrix Global Bond ETF	STXGBD	36.89	36.26	37.76	37.04	.41	--	44.31	51.90	.36	13.4	68.00
Satrix SA Bond Portfolio	STXGOV	8.30	8.15	8.52	8.18	-1.45	--	821.54	834.20	5.79	48.22	422.00

The information, data and compilations, or any part thereof, which make up the JSE ETF Factsheet ("Data") is being provided to you strictly for informational purposes. JSE Limited ("JSE") reserves the right to withdraw, modify, or replace the Data (or any part thereof) at any time.

To the extent allowed by law, JSE does not (expressly, tacitly or impliedly) guarantee or warrant the availability, sequence, accuracy, completeness, reliability or any other aspect of any of the Data or that the Data contained therein is up to date. To the extent allowed by law, neither the JSE nor any of its directors, officers, employees, contractors, agents or representatives are liable to any way to the reader/user or to any other natural or juristic person (Person) for any loss or damage as a result of any errors contained in the specification, for any loss arising from use of, or reliance on the Data in this JSE ETF Factsheet or any actions taken or not taken by or behalf of any Person in reliance on any Data in this JSE ETF Factsheet. You may not copy, reproduce, redistribute, alter or transmit any Data without the prior written consent of the JSE.

**The Johannesburg Stock Exchange** prides itself on a 130 year history as an effective, reputable trading platform. We are currently ranked the 19th largest stock exchange in the world based on market capitalization, and the largest exchange on the African continent. The JSE offers secure and efficient primary and secondary capital markets across a diverse range of asset classes which include equities, commodities, currencies, interest rates and bonds. We are the exchange of choice for local and international investors looking for investment opportunities across leading capital markets in South Africa and the broader African continent.

The JSE's achievements escalate through to this year's 20th anniversary of the first ETF listing on the local Exchange Traded Fund (ETF) market. Today, the ETF market capitalization is close to R90bn with over 70 listed ETFs on the JSE Main Board.

**Our Primary Markets Team** is a key access point for existing and/or potential issuers to gain exposure to local and international investor capital. The team focuses on listing companies and instruments on the Equity (Main Board and AltX) or Debt Market and aids in product development.

Contact the team: [listingontheJSE@jse.co.za](mailto:listingontheJSE@jse.co.za)

**Our Information Services Team** works to deliver world class market data to our clients. This data can often be customized on request providing our clients with the exact Intel required to make business and portfolio decisions.

We offer live, delayed, end of day, reference and historical market data for:

- Equities
- Indices
- Equity Derivatives
- Commodity Derivatives
- Commodity Derivatives
- Currency Derivatives
- Interest Rate Derivatives
- Bonds
- Market Announcements (SENS)

We have nearly 170 indices across a wide variety of methodologies and investment criteria.

Our partnership with FTSE Russell includes:

- FTSE/JSE All Share
- FTSE/JSE Top 40
- FTSE/JSE ESG
- FTSE/JSE Factor Indices
- FTSE/JSE Shariah
- FTSE/JSE RAFI and many more

We develop customised indices to suit your needs.

- Our other service offerings include:
- Bond ETP data
- Tick data
- Corporate Actions
- Business Intelligence Reports
- Valuations

Contact the team: [mdclients@jse.co.za](mailto:mdclients@jse.co.za)